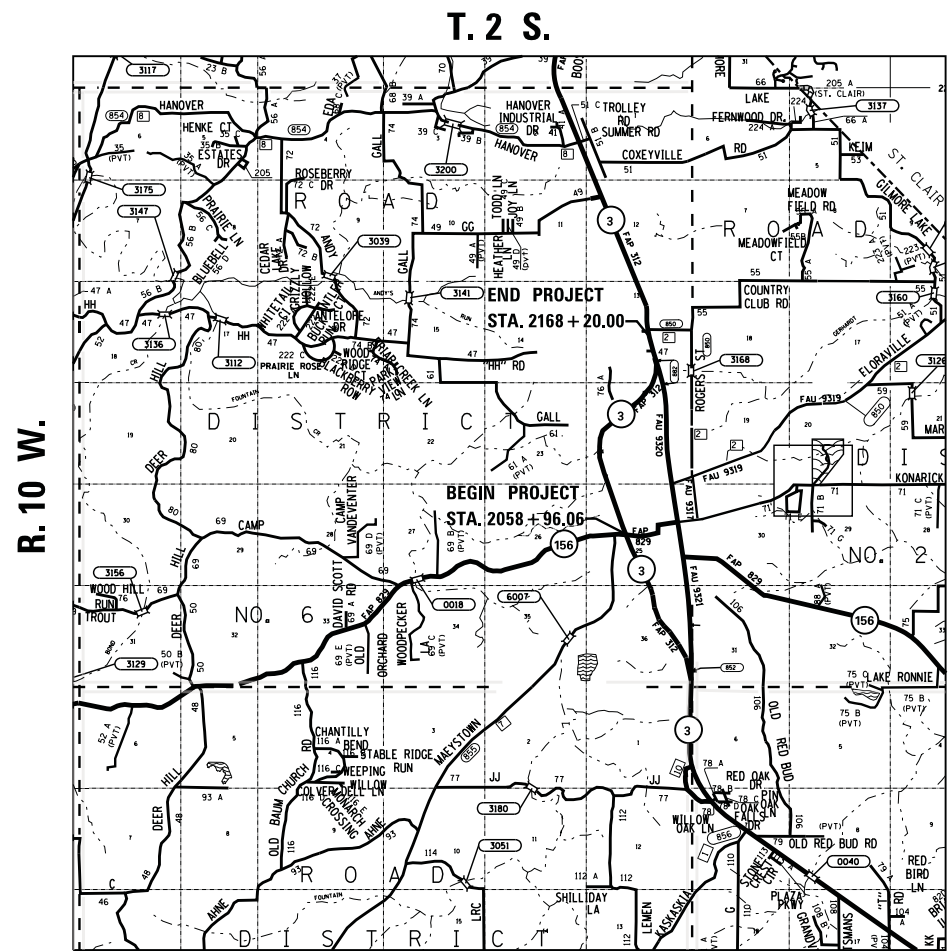
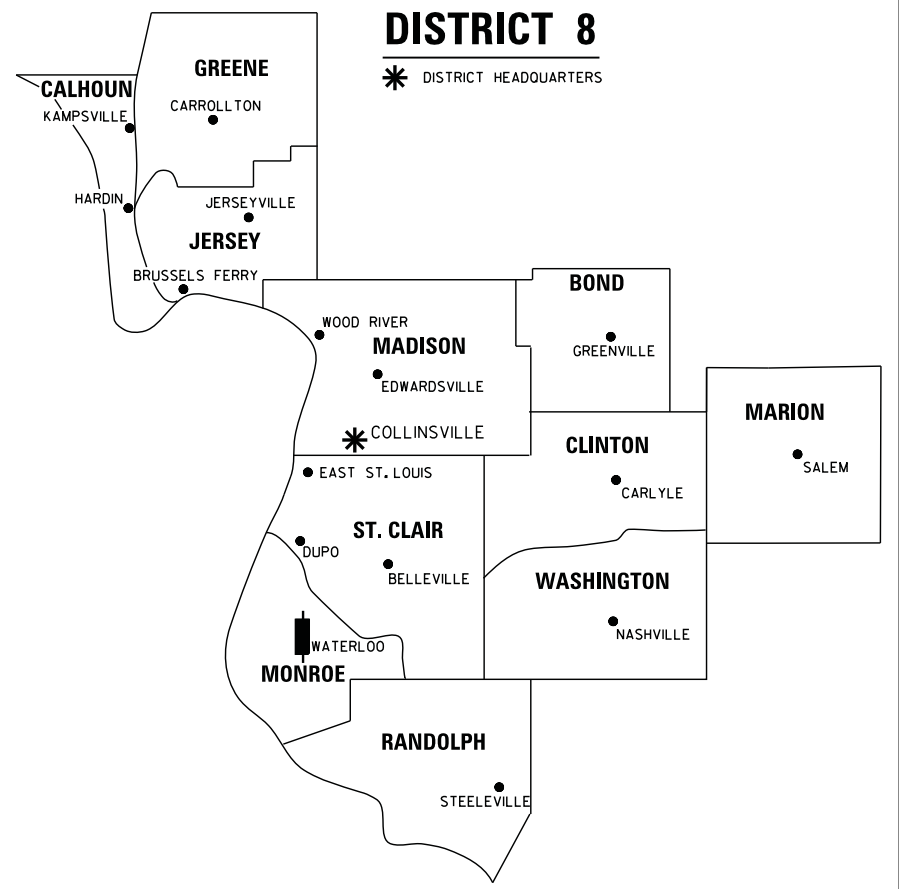


SPACE RESERVED FOR RECORDING OFFICER

SHEET INDEX			
SHEET NO.	STATION TO STATION	DESCRIPTION	PARCELS
1	N/A	COVER SHEET	N/A
2	N/A	LEGEND/NOTES	N/A
3	2058+96 to 2062+17	PLAT OF HIGHWAY	8407101, 8407102
4	2062+00 to 2069+00	PLAT OF HIGHWAY	8407103
5	2069+00 to 2074+00	PLAT OF HIGHWAY	8407103
6	4+20 to 7+00	PLAT OF HIGHWAY	8407107, 8407159
7	2059+00 to 2065+00	PLAT OF HIGHWAY	8407104
8	2063+00 to 2069+00	PLAT OF HIGHWAY	8407105, 8407106
9	2068+00 to 2073+80	PLAT OF HIGHWAY	8407160
10	2073+80 to 2079+97	PLAT OF HIGHWAY	8407109
11	2074+00 to 2079+00	PLAT OF HIGHWAY	8407162
12	2079+50 to 2081+68	PLAT OF HIGHWAY	8407110, 8407111
13	2081+00 to 2083+50	PLAT OF HIGHWAY	8407112
14	2074+47 to 2082+86	PLAT OF HIGHWAY	8407108
15	2084+00 to 2089+10	PLAT OF HIGHWAY	8407113
16	2083+00 to 2088+56	PLAT OF HIGHWAY	8407115, 8407156
17	2089+00 to 2101+00	PLAT OF HIGHWAY	8407114, 8407116
18	2093+78 to 2100+35	PLAT OF HIGHWAY	8407117, 8407118, 8407119, 8407120
19	2100+00 to 2110+00	PLAT OF HIGHWAY	8407121, 8407123
20	2101+00 to 2106+25	PLAT OF HIGHWAY	8407163, 8407164
21	2106+00 to 2111+00	PLAT OF HIGHWAY	8407165, 8407166
22	2107+00 to 2115+00	PLAT OF HIGHWAY	8407124, 8407125
23	2114+00 to 2120+00	PLAT OF HIGHWAY	8407126, 8407132
24	2110+00 to 2115+00	PLAT OF HIGHWAY	8407127, 8407128
25	2115+00 to 2119+00	PLAT OF HIGHWAY	8407129, 8407130
26	2120+00 to 2124+00	PLAT OF HIGHWAY	8407131
27	495+00 to 608+75	PLAT OF HIGHWAY	8407133
28	2124+00 to 2130+00	PLAT OF HIGHWAY	8407134
29	2128+00 to 2134+00	PLAT OF HIGHWAY	8407135
30	2132+00 to 2135+00	PLAT OF HIGHWAY	8407136
31	2131+00 to 2138+50	PLAT OF HIGHWAY	84070137, 8407138
32	2138+00 to 2149+00	PLAT OF HIGHWAY	8407139, 8407158
33	2138+75 to 2145+50	PLAT OF HIGHWAY	8407140, 8407141
34	2145+00 to 2152+05	PLAT OF HIGHWAY	8407142, 8407143, 8407144
35	2149+00 to 2155+00	PLAT OF HIGHWAY	8407145, 8407147
36	2151+75 to 2157+10	PLAT OF HIGHWAY	8407146, 8407148, 8407151
37	2156+90 to 2157+50	PLAT OF HIGHWAY	8407149, 8407150
38	2157+00 to 2163+00	PLAT OF HIGHWAY	8407152, 8407153
39	2162+27 to 2168+20	PLAT OF HIGHWAY	8407154, 8407155, 8407157
40	N/A	TOTAL HOLDING	8407114
41	N/A	TOTAL HOLDING	8407133
42	N/A	TOTAL HOLDING	8407137, 8407138
43	N/A	TOTAL HOLDING	8407157
44	N/A	TOTAL HOLDING	8407107
45	N/A	TOTAL HOLDING	8407139, 8407140, 8407158
46	N/A	CONTROL/SECTION TIES	N/A

STATE OF ILLINOIS
DEPARTMENT OF TRANSPORTATION
DIVISION OF HIGHWAYS
PLAT OF HIGHWAYS
FAP ROUTE 312 (IL 3)
SECTION 68-WRS-1
MONROE COUNTY
JOB NO.
R-98-007-04



LAND ACQUISITION PROJECT LENGTH = XX,XXX LIN. FT. = X.XXX MILES

PREPARED BY:
SHERRILL ASSOCIATES, INC.
Engineers - Surveyors - Planners
 Professional Design Firm Number 184-001288
 20 Edwardsville Professional Park 2727 Lemay Ferry Road
 Edwardsville, IL 62025 St. Louis, MO 63125



GREGORY S. McVICAR, PLS NO. 3512
 LICENSE EXPIRATION DATE: 11/30/2014

SHEET 1 OF 46 - SET 2 OF 2

ILLINOIS DEPARTMENT OF TRANSPORTATION DIVISION OF HIGHWAYS/REGION 5/DISTRICT 8 1102 EASTPORT PLAZA DRIVE COLLINSVILLE, ILLINOIS 62234-6198				
F.A.P. RTE.	SECTION	COUNTY	TOTAL SHEETS	SHEET NO.
312	68-WRS-1	MONROE	760	301
			CONTRACT NO. 76817	
FED. ROAD DIST. NO. ILLINOIS FED. AID PROJECT				