



SPACE RESERVED FOR RECORDING OFFICER

SEE LEGENDS, TOPOGRAPHIC STATEMENT, SURVEYORS NOTE(S) AND BASIS OF COORDINATES & BEARINGS STATEMENT ON SHEET 2

STATION	COORDINATE TABLE		
	OFFSET	NORTHING	EASTING
6+79.30	30.23' LT	606538.4981	2298890.3384
6+79.30	30.49' LT	606538.7580	2298890.3426
6+79.31	40.00' LT	606548.2677	2298890.4936
6+85.54	30.23' LT	606538.4042	2298896.5775
7+75.36	30.23' LT	606537.0531	2298986.3832
7+95.00	32.55' LT	606539.0693	2299006.0601
8+26.01	50.00' LT	606556.0511	2299037.3305
8+60.26	40.00' LT	606545.7733	2299071.5240
2059+95.10	69.17' LT	606570.6082	2299094.6546
2060+10.00	67.18' LT	606585.1348	2299090.7823
2060+95.33	55.78' LT	606668.3151	2299068.6090
2063+45.37	54.79' LT	606899.6452	2298973.6809
2064+25.04	64.02' LT	606969.6883	2298934.6271
2060+08.92	77.41' LT	606580.2199	2299081.7432
2060+96.01	65.78' LT	606665.1158	2299059.1127
2062+75.00	65.07' LT	606830.7058	2298991.1615
2062+75.00	75.07' LT	606826.8730	2298981.9251
2063+35.00	74.83' LT	606882.3816	2298959.1467
2063+35.00	64.83' LT	606886.2144	2298968.3831
2063+44.82	64.80' LT	606895.2967	2298964.6561
2064+25.15	74.10' LT	606965.9260	2298925.2755
10+00.00	POT	606503.4080	2299210.6160

STATE OF ILLINOIS)
) SS
 COUNTY OF MADISON)

I, GREGORY S. McVICAR, AN ILLINOIS PROFESSIONAL LAND SURVEYOR, CERTIFY THAT I HAVE SURVEYED THE PLAT OF HIGHWAY SHOWN HEREON AND THAT THIS PROFESSIONAL SERVICE CONFORMS TO THE CURRENT ILLINOIS MINIMUM STANDARDS FOR A BOUNDARY SURVEY FOR THE PROPOSED PARCEL TO BE ACQUIRED BY THE STATE OF ILLINOIS, DEPARTMENT OF TRANSPORTATION, SHOWN HEREON.

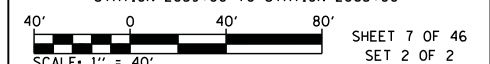
DATED _____

GREGORY S. McVICAR, PLS NO. 3512
 LICENSE EXPIRATION DATE: 11/30/2014



SHERRILL ASSOCIATES, INC.
 Engineers - Surveyors - Planners
 Professional Design Firm Number 184-001238
 316 North Main Street, Edwardsville, IL 62025
 2727 Telegraph Road, St. Louis, MO 63125

ILLINOIS DEPARTMENT OF TRANSPORTATION
PLAT OF HIGHWAYS
 FAP ROUTE 312 (IL 3)
 SECTION 68-WRS-1
 MONROE COUNTY
 JOB NO. R-98-007-04
 STATION 2059+00 TO STATION 2065+00



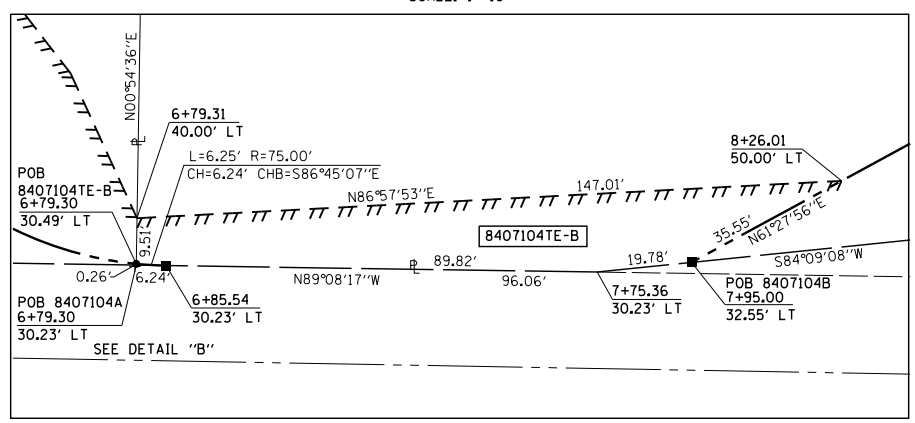
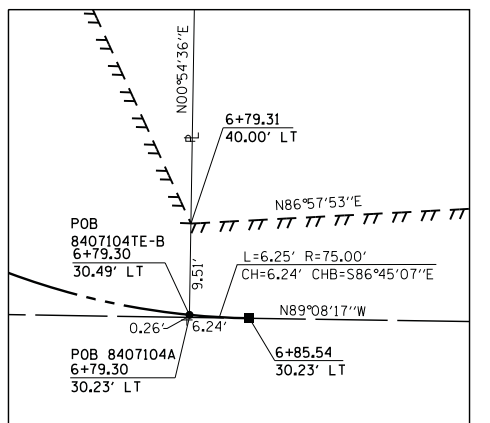
ILLINOIS DEPARTMENT OF TRANSPORTATION
 DIVISION OF HIGHWAYS/REGION 5/DISTRICT 8
 1102 EASTPORT PLAZA DRIVE
 COLLINGSVILLE, ILLINOIS 62234-6198

F.A. RTE.	SECTION	COUNTY	TOTAL SHEETS	SHEET NO.
312	68-WRS-1	MONROE	760	307

CONTRACT NO. 76817

COMPLETION DATE OF FIELD WORK PERFORMED
 LAND SURVEY: JULY, 2011 ROW STAKING: NOVEMBER, 2012

FED. ROAD DIST. NO. ILLINOIS FED. AID PROJECT



POC 8407104A
 POC 8407104B
 POC 8407107E-A
 POC 8407107E-B
 W 1/4 COR SEC 25-2-10

S LINE NW 1/4 SEC 25-2-10
 S 88°58'38" E (1470.21')

S 89° 08' 05" E 800.00'
SBI ROUTE 156 (PARK STREET) (VARYING WIDTH)

LAKEVIEW DRIVE

PARCEL NO.	OWNER	TOTAL HOLDING	FEE SIMPLE ACQUISITION		REMAINDER	EASEMENTS		PERMANENT TAX NUMBER	PROPERTY ACQUIRED BY
			ACRES	SO. FT.		ACRES	SO. FT.		
8407104	GATEWAY F.S., INC., SUCCESSOR BY MERGER TO MONROE SERVICE COMPANY TITLE REPORT NO. MW-187.0	1.5730	A - 0.0000 B - 0.0331	A - 1 B - 1,440	1.5399	TE-A - 0.1095 TE-B - 0.0413	TE-A - 4,769 TE-B - 1,801	07-25-182-007-000	