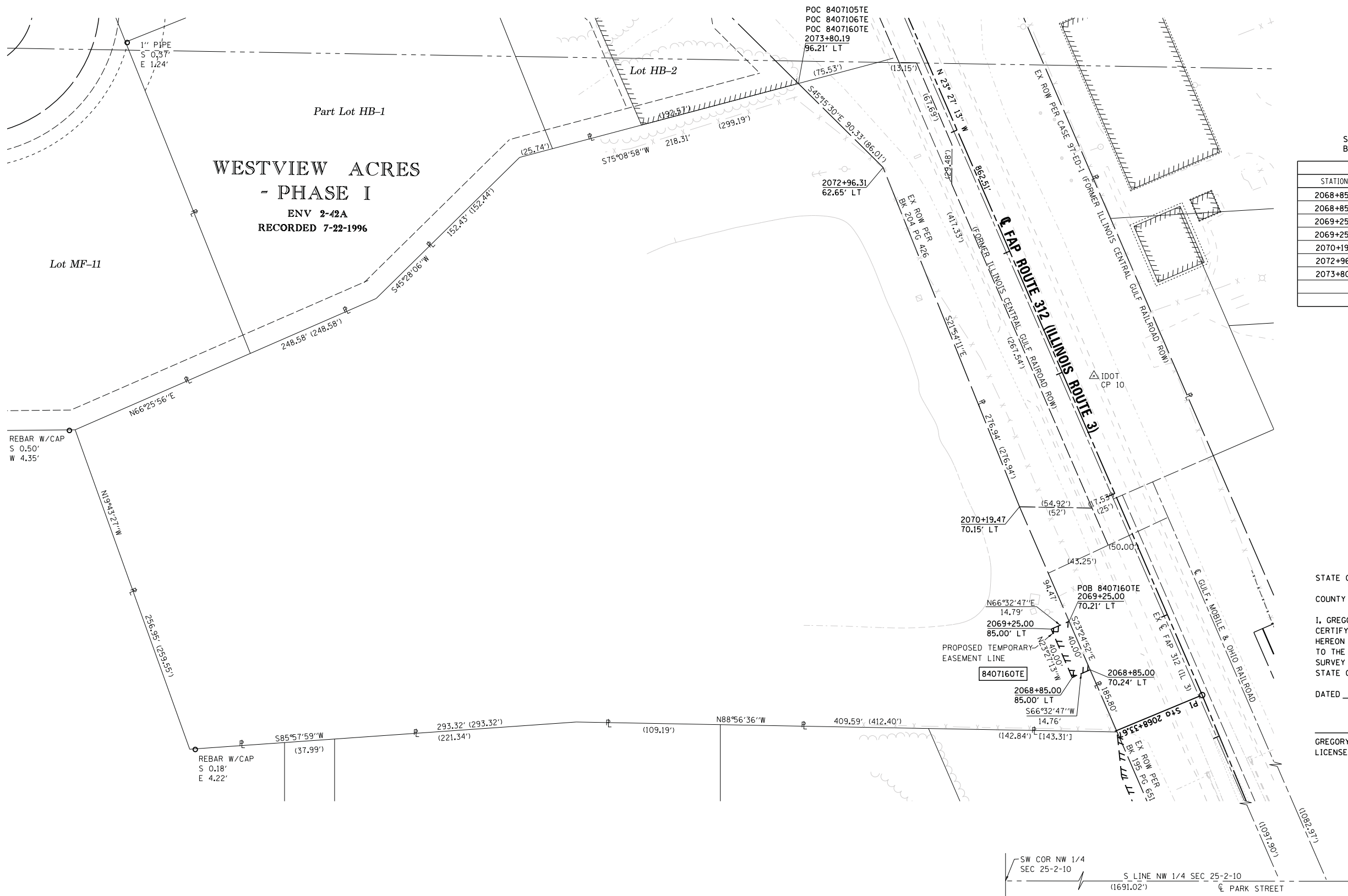




SPACE RESERVED FOR RECORDING OFFICER

SEE LEGENDS, TOPOGRAPHIC STATEMENT, SURVEYORS NOTE(S) AND BASIS OF COORDINATES & BEARINGS STATEMENT ON SHEET 2

COORDINATE TABLE			
STATION	OFFSET	NORTHING	EASTING
2068+85.00	85.00' LT	607384.9110	2298738.7305
2068+85.00	70.24' LT	607390.7854	2298752.2705
2069+25.00	85.00' LT	607421.6063	2298722.8103
2069+25.00	70.21' LT	607427.4915	2298736.3754
2070+19.47	70.15' LT	607514.1855	2298698.8336
2072+96.31	62.65' LT	607771.1367	2298595.5240
2073+80.19	96.21' LT	607834.7239	2298531.3608



STATE OF ILLINOIS)
) SS
 COUNTY OF MADISON)

I, GREGORY S. McVICAR, AN ILLINOIS PROFESSIONAL LAND SURVEYOR, CERTIFY THAT I HAVE SURVEYED THE PLAT OF HIGHWAY SHOWN HEREON AND THAT THIS PROFESSIONAL SERVICE CONFORMS TO THE CURRENT ILLINOIS MINIMUM STANDARDS FOR A BOUNDARY SURVEY FOR THE PROPOSED PARCEL TO BE ACQUIRED BY THE STATE OF ILLINOIS, DEPARTMENT OF TRANSPORTATION, SHOWN HEREON.

DATED _____

GREGORY S. McVICAR, PLS NO. 3512
 LICENSE EXPIRATION DATE: 11/30/2014



SHERRILL ASSOCIATES, INC.
 Engineers - Surveyors - Planners
 Professional Design Firm Number 184-001238
 316 North Main Street, Edwardsville, IL 62025
 2727 Telegraph Road, St. Louis, MO 63125

ILLINOIS DEPARTMENT OF TRANSPORTATION
PLAT OF HIGHWAYS
 FAP ROUTE 312 (IL 3)
 SECTION 68-WRS-1
 MONROE COUNTY
 JOB NO. R-98-007-04
 STATION 2068+00 TO STATION 2073+80

40' 0 40' 80' SHEET 9 OF 46
 SCALE: 1" = 40' SET 2 OF 2

ILLINOIS DEPARTMENT OF TRANSPORTATION
 DIVISION OF HIGHWAYS/REGION 5/DISTRICT 8
 1102 EASTPORT PLAZA DRIVE
 COLLINGSVILLE, ILLINOIS 62234-6198

F.A. RTE.	SECTION	COUNTY	TOTAL SHEETS	SHEET NO.
312	68-WRS-1	MONROE	760	309

CONTRACT NO. 76817

PARCEL NO.	OWNER	TOTAL HOLDING	FEE SIMPLE ACQUISITION			REMAINDER	EASEMENTS		PERMANENT TAX NUMBER	PROPERTY ACQUIRED BY
			ACRES	ACRES	SQ. FT.		ACRES	ACRES		
8407160	CITY OF WATERLOO TITLE REPORT NO. MW-167.0	5.9503	N/A	N/A	N/A	5.9503	TE - 0.0136	TE - 591	07-25-100-005-000	

COMPLETION DATE OF FIELD WORK PERFORMED
 LAND SURVEY: JULY, 2011 ROW STAKING: NOVEMBER, 2012