

PART OF SEC 23, 24, 25 & 26, T 2 S, R 10 W, OF THE 3RD PM, MONROE COUNTY, ILLINOIS



SPACE RESERVED FOR RECORDING OFFICER

SEE LEGENDS, TOPOGRAPHIC STATEMENT, SURVEYORS NOTES AND BASIS OF COORDINATES & BEARINGS STATEMENT ON SHEET 2

COORDINATE TABLE			
STATION	OFFSET	NORTHING	EASTING
2090+22.90	461.42' LT	609191.6590	2297541.2750
2089+24.98	105.00' LT	609243.6881	2297907.2260
2089+10.22	72.02' LT	609243.0453	2297944.0919
2088+90.00	72.37' LT	609224.5901	2297951.0841
2085+00.00	74.74' LT	608865.8676	2298104.1324
2087+50.14	74.74' LT	609095.3371	2298004.5769
2085+00.13	64.85' LT	608869.9778	2298113.2655
2084+70.00	80.00' LT	608836.2513	2298111.2442
2084+38.63	80.00' LT	608807.4736	2298123.7294
2084+07.76	69.34' LT	608783.3937	2298145.8009
15+00.00	POT	608758.5134	2297732.3924
17+00.00	POT	608758.3137	2297932.3923
20+00.00	POT	608758.0141	2298232.3921
16+75.00	25.88' LT	608784.2200	2297907.4181
16+75.00	30.00' LT	608788.3386	2297907.4222
16+75.00	40.00' LT	608798.3386	2297907.4322
18+00.00	40.00' LT	608798.2138	2298032.4322
18+00.00	30.00' LT	608788.2138	2298032.4222

**WATERLOO SPORTS ASSOCIATION DUPLEX PLAT**  
 ENV 2-25A  
 RECORDED 04-26-1996

STATE OF ILLINOIS )  
 ) SS  
 COUNTY OF MADISON )

I, GREGORY S. McVICAR, AN ILLINOIS PROFESSIONAL LAND SURVEYOR, CERTIFY THAT I HAVE SURVEYED THE PLAT OF HIGHWAY SHOWN HEREON AND THAT THIS PROFESSIONAL SERVICE CONFORMS TO THE CURRENT ILLINOIS MINIMUM STANDARDS FOR A BOUNDARY SURVEY FOR THE PROPOSED PARCEL TO BE ACQUIRED BY THE STATE OF ILLINOIS, DEPARTMENT OF TRANSPORTATION, SHOWN HEREON.

DATED \_\_\_\_\_  
 GREGORY S. McVICAR, PLS NO. 3512  
 LICENSE EXPIRATION DATE: 11/30/2014



**SA SHERRILL ASSOCIATES, INC.**  
 Engineers - Surveyors - Planners  
 Professional Design Firm Number 184-001238  
 316 North Main Street 2727 Telegraph Road  
 Edwardsville, IL 62025 St. Louis, MO 63125

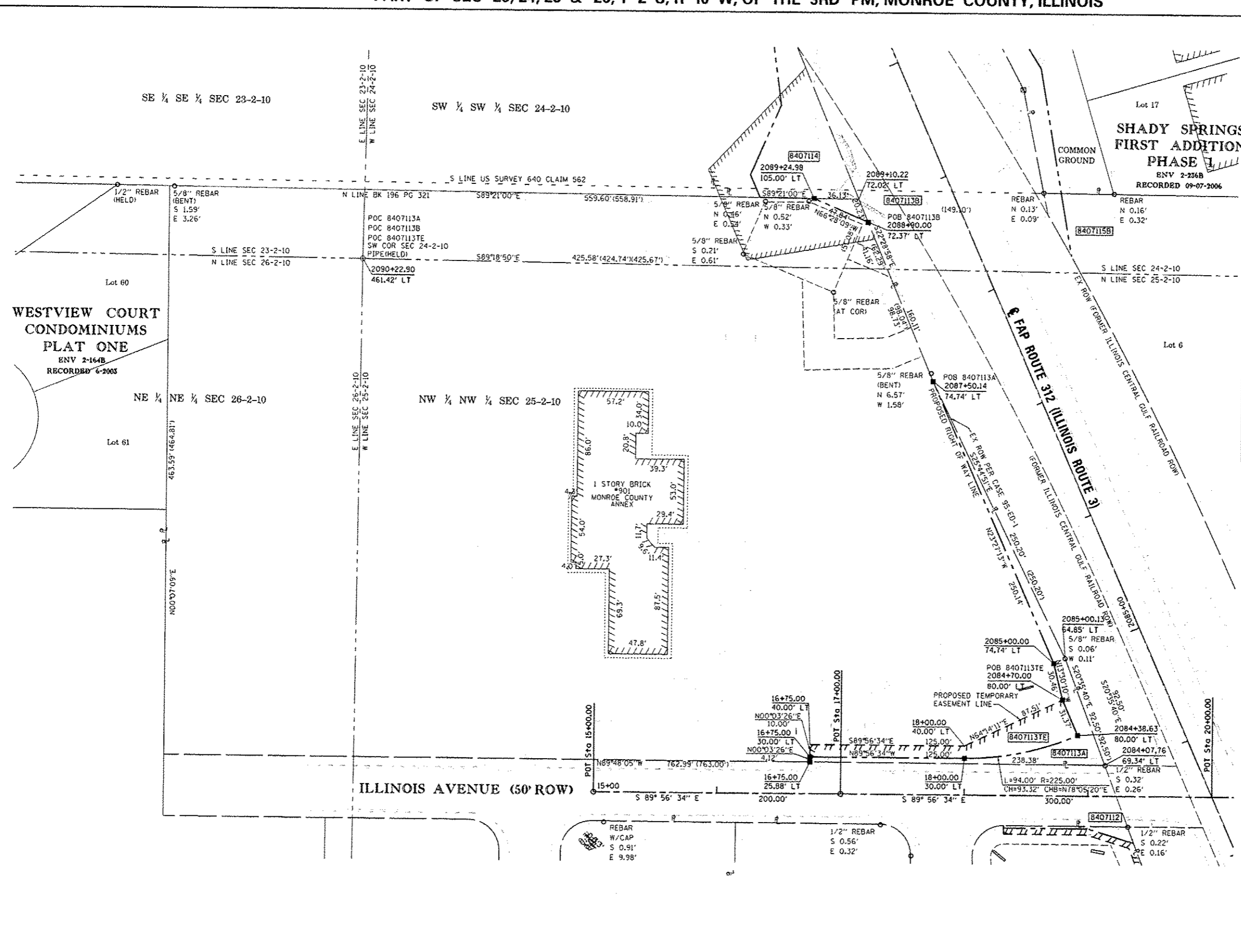
ILLINOIS DEPARTMENT OF TRANSPORTATION  
**PLAT OF HIGHWAYS**  
 FAP ROUTE 312 (IL 3)  
 SECTION 68-WRS-1  
 MONROE COUNTY  
 JOB NO. R-98-007-04

STATION 2084+00 TO STATION 2089+10  
  
 SCALE: 1" = 40' SHEET 15 OF 46  
 SET 2 OF 2

ILLINOIS DEPARTMENT OF TRANSPORTATION  
 DIVISION OF HIGHWAYS/REGION 5/DISTRICT 8  
 1102 EASTPORT PLAZA DRIVE  
 COLLINGSVILLE, ILLINOIS 62234-6198

F.A. RTE.	SECTION	COUNTY	TOTAL SHEETS	SHEET NO.
312	68-WRS-1	MONROE	760	315

CONTRACT NO. 76817



PARCEL NO.	OWNER	TOTAL HOLDING ACRES	FEE SIMPLE ACQUISITION		REMAINDER ACRES	EASEMENTS		PERMANENT TAX NUMBER	PROPERTY ACQUIRED BY
			ACRES	SQ. FT.		PE - PERMANENT ACRES	TE - TEMPORARY SQ. FT.		
8407113	THE MONROE COUNTY PUBLIC BUILDING COMMISSION, A MUNICIPAL CORPORATION TITLE REPORT NO. MW-168.0	7.0024	0.0995	4,334	6.9029	TE-0.0777	TE-3,383	GRADING	07-25-100-009-000

REVISI 4/8/13

COMPLETION DATE OF FIELD WORK PERFORMED  
 LAND SURVEY: JULY, 2011 ROW STAKING: NOVEMBER, 2012