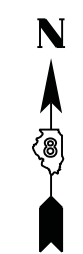


PART OF SEC 24, T 2 S, R 10 W, OF THE 3RD PM, MONROE COUNTY, ILLINOIS



SPACE RESERVED FOR RECORDING OFFICER

SEE LEGENDS, TOPOGRAPHIC STATEMENT, SURVEYORS NOTE(S) AND BASIS OF COORDINATES & BEARINGS STATEMENT ON SHEET 2

COORDINATE TABLE			
STATION	OFFSET	NORTHING	EASTING
2130+00.20	85.30' RT	612778.1490	2299306.3207
2131+14.97	172.41' RT	612811.9607	2299446.3801
2130+89.35	193.12' RT	612779.0111	2299446.2202
2131+50.20	105.34' RT	612881.6660	2299416.7062
2132+18.94	88.35' RT	612945.6582	2299447.0291
2132+65.93	50.36' RT	613006.0836	2299447.3225
2133+40.00	55.00' RT	613060.5219	2299497.7572
2133+89.60	49.61' LT	613165.0978	2299448.0944
2134+90.00	55.00' RT	613176.7119	2299592.6249
2134+27.19	80.00' LT	613213.4396	2299448.3290
2134+90.00	75.00' RT	613164.0629	2299608.1169
2135+50.00	75.00' RT	613210.5389	2299646.0640
2135+00.00	80.00' RT	613269.8389	2299494.3784
2135+50.00	55.00' RT	613223.1879	2299630.5720
2135+45.00	80.00' LT	613304.6959	2299522.8387
2135+00.00	90.00' LT	613276.1634	2299486.6324
2135+45.00	90.00' LT	613311.0204	2299515.0927
2138+76.88	50.51' RT	613479.2317	2299833.8280
2137+95.56	49.51' LT	613479.4974	2299704.9213
2136+34.50	247.60' LT	613480.0237	2299449.6232
2135+50.00	70.00' RT	613213.7011	2299642.1910
2135+95.00	70.00' RT	613248.5581	2299670.6513
2136+20.00	65.00' RT	613271.0854	2299682.5896
2137+10.00	65.00' RT	613340.7994	2299739.5102
2137+50.00	55.48' RT	613377.8063	2299757.4317
2137+70.77	80.00' LT	613479.5784	2299665.6282
2138+50.00	85.00' RT	613436.5944	2299843.5454
2138+80.95	55.51' RT	613479.2184	2299840.2733
2139+04.93	85.00' RT	613479.1400	2299878.2834
2130+03.39	89.15' RT	612778.1798	2299311.3206
2130+08.94	86.47' RT	612784.1775	2299312.7492
2131+69.74	100.51' RT	612899.8547	2299425.3250
2131+70.94	105.36' RT	612897.7137	2299429.8434
2132+09.77	95.77' RT	612933.8608	2299446.9719

STATE OF ILLINOIS)
) SS
 COUNTY OF MADISON)

I, GREGORY S. McVICAR, AN ILLINOIS PROFESSIONAL LAND SURVEYOR, CERTIFY THAT I HAVE SURVEYED THE PLAT OF HIGHWAY SHOWN HEREON AND THAT THIS PROFESSIONAL SERVICE CONFORMS TO THE CURRENT ILLINOIS MINIMUM STANDARDS FOR A BOUNDARY SURVEY FOR THE PROPOSED PARCEL TO BE ACQUIRED BY THE STATE OF ILLINOIS, DEPARTMENT OF TRANSPORTATION, SHOWN HEREON.

DATED _____

GREGORY S. McVICAR, PLS NO. 3512
 LICENSE EXPIRATION DATE: 11/30/2014



SHERRILL ASSOCIATES, INC.
 Engineers - Surveyors - Planners
 Professional Design Firm Number 184-001238
 316 North Main Street, 2727 Telegraph Road
 Edwardsville, IL 62025, St. Louis, MO 63125

ILLINOIS DEPARTMENT OF TRANSPORTATION
PLAT OF HIGHWAYS
 FAP ROUTE 312 (IL 3)
 SECTION 68-WRS-1
 MONROE COUNTY
 JOB NO. R-98-007-04
 STATION 2131+00 TO STATION 2138+50

40' 0 40' 80'
 SCALE: 1" = 40'
 SHEET 31 OF 46
 SET 2 OF 2

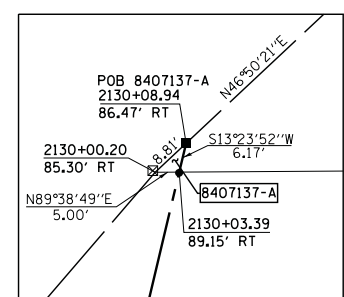
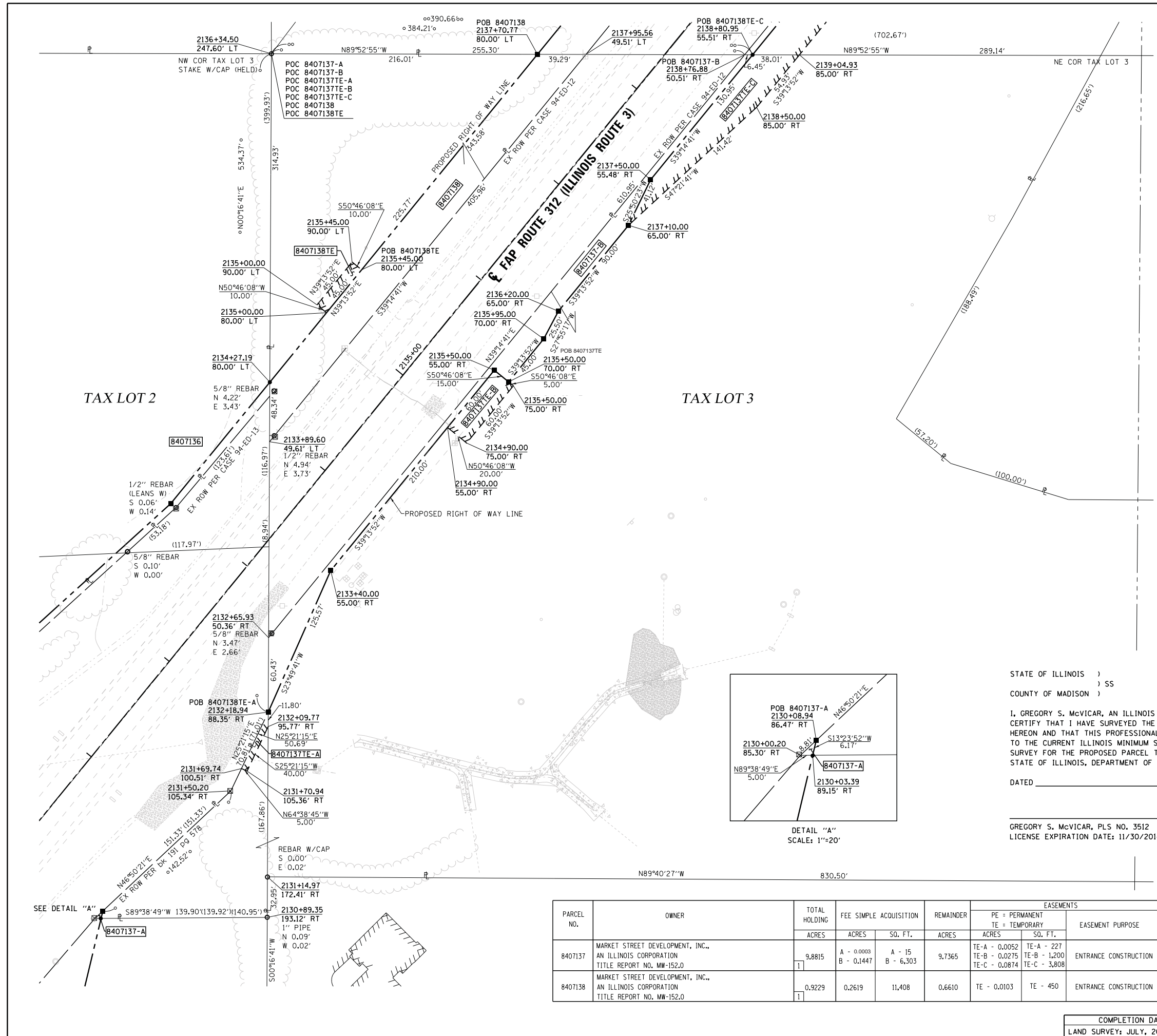
ILLINOIS DEPARTMENT OF TRANSPORTATION
 DIVISION OF HIGHWAYS/REGION 5/DISTRICT 8
 1102 EASTPORT PLAZA DRIVE
 COLLINSVILLE, ILLINOIS 62234-6198

F.A. RT.	SECTION	COUNTY	TOTAL SHEETS	SHEET NO.
312	68-WRS-1	MONROE	760	331

CONTRACT NO. 76817

COMPLETION DATE OF FIELD WORK PERFORMED
 LAND SURVEY: JULY, 2011 ROW STAKING: NOVEMBER, 2012

FED. ROAD DIST. NO. [] ILLINOIS FED. AID PROJECT



PARCEL NO.	OWNER	TOTAL HOLDING ACRES	FEE SIMPLE ACQUISITION		REMAINDER ACRES	EASEMENTS		EASEMENT PURPOSE	PERMANENT TAX NUMBER	PROPERTY ACQUIRED BY
			ACRES	SO. FT.		ACRES	SO. FT.			
8407137	MARKET STREET DEVELOPMENT, INC., AN ILLINOIS CORPORATION TITLE REPORT NO. MW-152.0	9.8815	A - 0.0003 B - 0.1447	A - 15 B - 6,303	9.7365	TE-A - 0.0052 TE-B - 0.0275 TE-C - 0.0874	TE-A - 227 TE-B - 1,200 TE-C - 3,808	ENTRANCE CONSTRUCTION	07-24-100-004-000	
8407138	MARKET STREET DEVELOPMENT, INC., AN ILLINOIS CORPORATION TITLE REPORT NO. MW-152.0	0.9229	0.2619	11,408	0.6610	TE - 0.0103	TE - 450	ENTRANCE CONSTRUCTION	07-24-100-004-000	