

PART OF US SURVEY 641 CLAIM 1645, T 2 S, R 10 W, OF THE 3RD PM, MONROE COUNTY, ILLINOIS

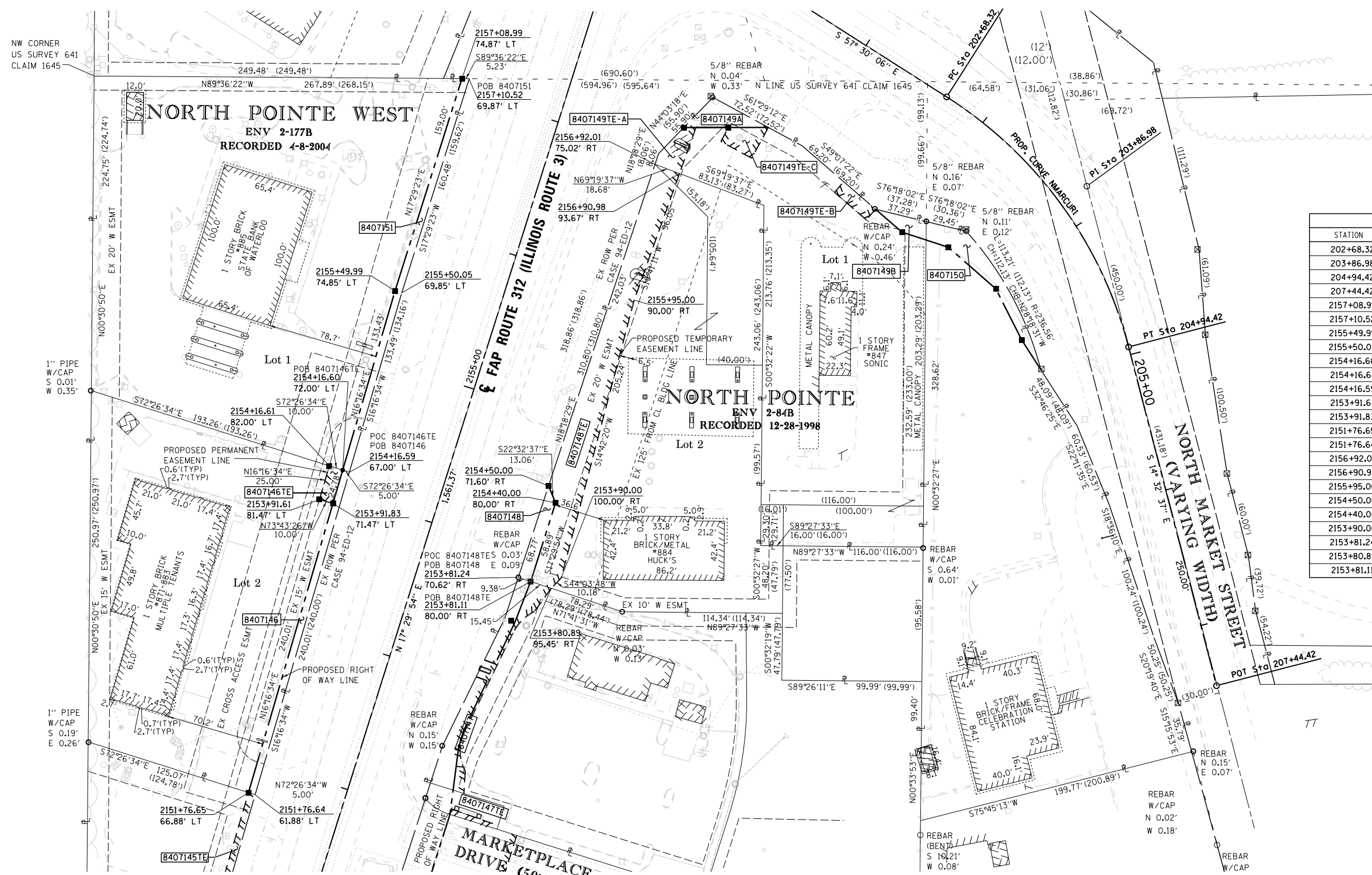


SPACE RESERVED FOR RECORDING OFFICER

SEE LEGENDS, TOPOGRAPHIC STATEMENT, SURVEYORS NOTE(S) AND BASIS OF COORDINATES & BEARINGS STATEMENT ON SHEET 2

COORDINATE TABLE			
STATION	OFFSET	NORTHING	EASTING
202+68.32	PC	615188.3790	2300780.4451
203+86.98	PI	615124.6257	2300880.5241
204+94.42	PT	615009.7675	2300910.3216
207+44.42	POT	614767.7782	2300973.1004
2157+08.99	74.87' LT	615201.4920	2300434.3249
2157+10.52	69.87' LT	615201.4445	2300439.5523
2155+49.99	74.85' LT	615049.8470	2300386.5413
2155+50.05	69.85' LT	615048.3949	2300391.3261
2154+16.60	72.00' LT	614921.7682	2300349.1463
2154+16.61	82.00' LT	614924.7855	2300339.6098
2154+16.59	67.00' LT	614920.2596	2300353.9146
2153+91.61	81.47' LT	614900.7875	2300332.6031
2153+91.83	71.47' LT	614897.9848	2300342.2023
2151+76.65	66.88' LT	614691.3810	2300281.8805
2151+76.64	61.88' LT	614689.8724	2300286.6488
2156+92.01	75.02' RT	615140.2310	2300572.1712
2156+90.98	93.67' RT	615133.6369	2300589.6467
2155+95.00	90.00' RT	615043.2048	2300557.2915
2154+50.00	71.60' RT	614910.4481	2300496.1414
2154+40.00	80.00' RT	614898.3841	2300501.1493
2153+90.00	100.00' RT	614844.6842	2300505.1899
2153+81.24	70.62' RT	614845.1635	2300474.5403
2153+80.89	95.45' RT	614837.3658	2300498.1069
2153+81.11	80.00' RT	614842.2181	2300483.4420

PROP. CURVE NMACURI
 PI STA. = 203+86.98
 Δ = 42° 57' 29" (RT)
 D = 18° 59' 59"
 R = 301.56'
 T = 118.66'
 L = 226.10'
 E = 22.51'
 P.C. STA. = 202+68.32
 P.T. STA. = 204+94.42



STATE OF ILLINOIS)
) SS
 COUNTY OF MADISON)

I, GREGORY S. McVICAR, AN ILLINOIS PROFESSIONAL LAND SURVEYOR, CERTIFY THAT I HAVE SURVEYED THE PLAT OF HIGHWAY SHOWN HEREON AND THAT THIS PROFESSIONAL SERVICE CONFORMS TO THE CURRENT ILLINOIS MINIMUM STANDARDS FOR A BOUNDARY SURVEY FOR THE PROPOSED PARCEL TO BE ACQUIRED BY THE STATE OF ILLINOIS, DEPARTMENT OF TRANSPORTATION, SHOWN HEREON.

DATED _____

GREGORY S. McVICAR, PLS NO. 3512
 LICENSE EXPIRATION DATE: 11/30/2014



PARCEL NO.	OWNER	TOTAL HOLDING ACRES	FEE SIMPLE ACQUISITION		REMAINDER ACRES	EASEMENTS		EASEMENT PURPOSE	PERMANENT TAX NUMBER	PROPERTY ACQUIRED BY
			ACRES	SO. FT.		PE = PERMANENT ACRES	TE = TEMPORARY SO. FT.			
8407146	AEW PROPERTIES, LLC, A MISSOURI LIMITED LIABILITY COMPANY TITLE REPORT NO. MW-146.0	0.8767	0.0275	1200	0.8492	TE - 0.0057	TE - 249	DRAINAGE CONNECTION	07-13-450-002-000	
8407148	MARK BAYLEY FAMILY, LLC, AN ILLINOIS LIMITED LIABILITY COMPANY TITLE REPORT NO. MW-144.0	0.9190	0.0131	570	0.9059	TE - 0.1386	TE - 6037	GRADING	07-13-449-002-000	
8407151	STATE BANK OF WATERLOO, AN ILLINOIS BANKING CORPORATION TITLE REPORT NO. MW-145.0	1.3379	0.0336	1346	1.3043	N/A	N/A	N/A	07-13-450-001-000	

COMPLETION DATE OF FIELD WORK PERFORMED
 LAND SURVEY: JULY, 2011 ROW STAKING: NOVEMBER, 2012

SHERRILL ASSOCIATES, INC.
 Engineers - Surveyors - Planners
 Professional Design Firm Number 184-001238
 316 North Main Street, Edwardsville, IL 62025 | 2727 Telegraph Road, St. Louis, MO 63125

ILLINOIS DEPARTMENT OF TRANSPORTATION
PLAT OF HIGHWAYS
 FAP ROUTE 312 (IL 3)
 SECTION 68-WRS-1
 MONROE COUNTY
 JOB NO. R-98-007-04
 STATION 2151+75 TO STATION 2157+10

SCALE: 1" = 40'

ILLINOIS DEPARTMENT OF TRANSPORTATION
 DIVISION OF HIGHWAYS/REGION 5/DISTRICT 8
 1102 EASTPORT PLAZA DRIVE
 COLLINSVILLE, ILLINOIS 62234-6198

F.A. RTE.	SECTION	COUNTY	TOTAL SHEETS	SHEET NO.
312	68-WRS-1	MONROE	760	336

CONTRACT NO. 76817

FED. ROAD DIST. NO. ILLINOIS FED. AID PROJECT