

PART OF US SURVEY 641 CLAIM 1645, T 2 S, R 10 W, OF THE 3RD PM, MONROE COUNTY, ILLINOIS

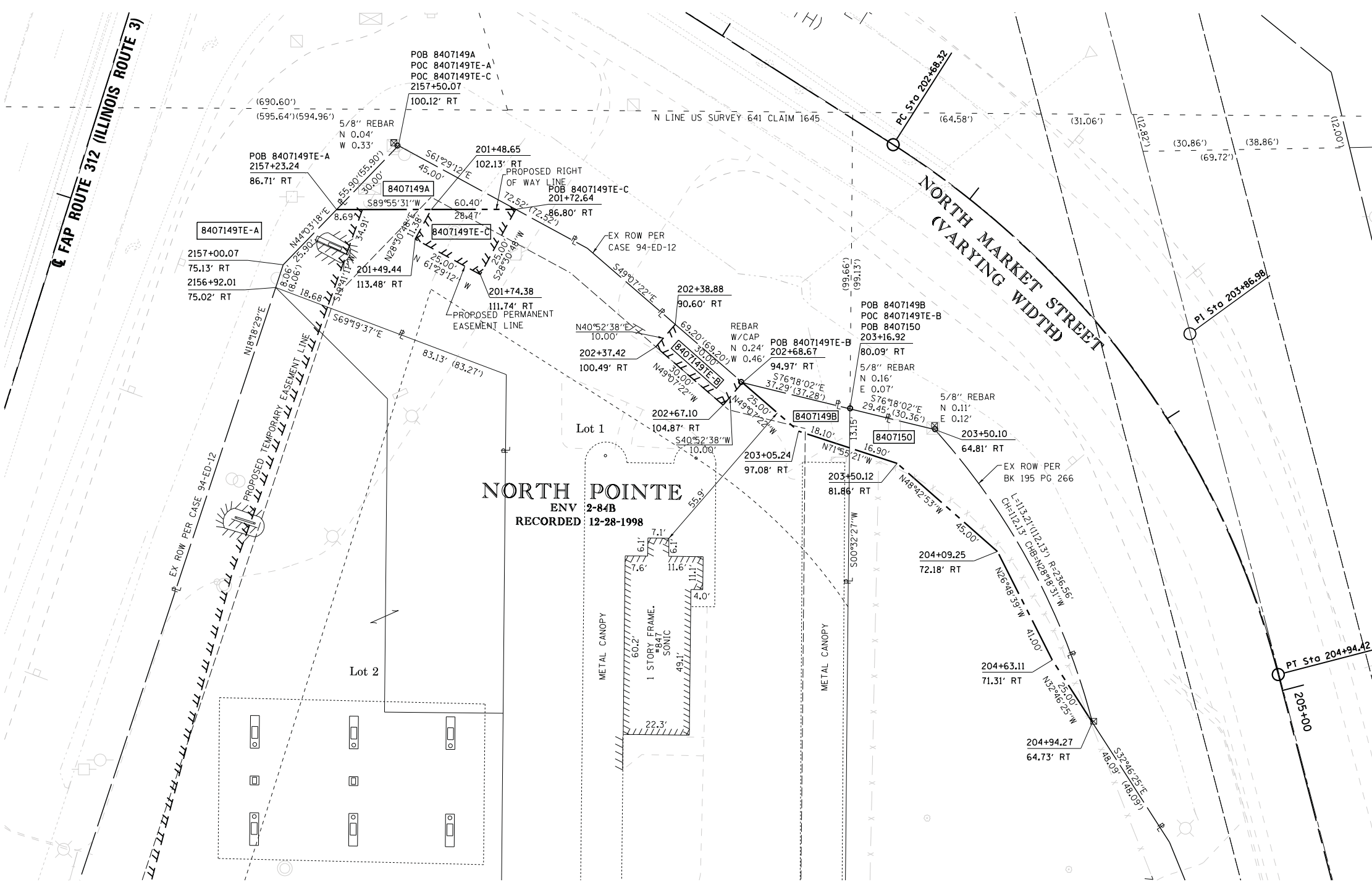


SPACE RESERVED FOR RECORDING OFFICER

SEE LEGENDS, TOPOGRAPHIC STATEMENT, SURVEYORS NOTE(S) AND BASIS OF COORDINATES & BEARINGS STATEMENT ON SHEET 2

COORDINATE TABLE			
STATION	OFFSET	NORTHING	EASTING
202+68.32	PC	615188.3790	2300780.4451
203+86.98	PI	615124.6257	2300880.5241
204+94.42	PT	615009.7675	2300910.3216
207+44.42	POT	614767.7782	2300973.1004
2156+92.01	75.02' RT	615140.2310	2300572.1712
2157+00.07	75.13' RT	615147.8830	2300574.7031
2157+23.24	86.71' RT	615166.4966	2300592.7126
2157+50.07	100.12' RT	615188.0568	2300613.5731
201+48.65	102.13' RT	615166.5383	2300624.6437
201+49.44	113.48' RT	615156.5419	2300619.2131
201+72.64	86.80' RT	615166.5754	2300653.1148
201+74.38	111.74' RT	615144.6078	2300641.1808
202+37.42	100.49' RT	615120.2232	2300700.3921
202+38.88	90.60' RT	615127.7843	2300706.9365
202+67.10	104.87' RT	615102.0919	2300724.3754
202+68.67	94.97' RT	615108.1511	2300729.6199
203+05.24	97.08' RT	615091.7901	2300748.5228
203+16.92	80.09' RT	615099.3199	2300765.8487
203+50.12	81.86' RT	615080.9295	2300781.7951
203+50.10	64.81' RT	615092.3872	2300794.2890
204+09.25	72.18' RT	615051.2381	2300815.6096
204+63.11	71.31' RT	615014.6456	2300834.1026
204+94.27	64.73' RT	614993.6252	2300847.6356

PROP. CURVE NMARCUR1
 PI STA. = 203+86.98
 Δ = 42° 57' 29" (RT)
 R = 18° 59' 59"
 D = 301.56'
 T = 118.66'
 L = 226.10'
 E = 22.51'
 P.C. STA. = 202+68.32
 P.T. STA. = 204+94.42



PARCEL NO.	OWNER	TOTAL HOLDING	FEE SIMPLE ACQUISITION		REMAINDER	EASEMENTS		PERMANENT TAX NUMBER	PROPERTY ACQUIRED BY
			ACRES	SO. FT.		ACRES	ACRES		
8407149	ESCH INC., GENERAL PARTNER, ESCH FAMILY LIMITED PARTNERSHIP DATED APRIL 20, 1999 TITLE REPORT NO. MW-143.0	0.7809	A-0.0149 B-0.0075	A-650 B-326	0.7585	TE-A - 0.0111 TE-B - 0.0069 TE-C - 0.0105	TE-A - 485 TE-B - 300 TE-C - 455	TE-A & TE-B - GRADING TE-C - DRAINAGE CONNECTION	07-13-449-001-000
8407150	NORTH GLEN CENTER, LLC TITLE REPORT NO. MW-283.0	1.1568	0.0299	1302	1.1269	N/A	N/A	N/A	07-13-449-004-000

STATE OF ILLINOIS)
) SS
 COUNTY OF MADISON)

I, GREGORY S. McVICAR, AN ILLINOIS PROFESSIONAL LAND SURVEYOR, CERTIFY THAT I HAVE SURVEYED THE PLAT OF HIGHWAY SHOWN HEREON AND THAT THIS PROFESSIONAL SERVICE CONFORMS TO THE CURRENT ILLINOIS MINIMUM STANDARDS FOR A BOUNDARY SURVEY FOR THE PROPOSED PARCEL TO BE ACQUIRED BY THE STATE OF ILLINOIS, DEPARTMENT OF TRANSPORTATION, SHOWN HEREON.

DATED _____

GREGORY S. McVICAR, PLS NO. 3512
 LICENSE EXPIRATION DATE: 11/30/2014



SHERRILL ASSOCIATES, INC.
 Engineers - Surveyors - Planners
 Professional Design Firm Number 184-001238
 316 North Main Street, Edwardsville, IL 62025
 2727 Telegraph Road, St. Louis, MO 63125

ILLINOIS DEPARTMENT OF TRANSPORTATION
PLAT OF HIGHWAYS
 FAP ROUTE 312 (IL 3)
 SECTION 68-WRS-1
 MONROE COUNTY
 JOB NO. R-98-007-04
 STATION 2156+90 TO STATION 2157+50

SCALE: 1" = 20'

ILLINOIS DEPARTMENT OF TRANSPORTATION
 DIVISION OF HIGHWAYS/REGION 5/DISTRICT 8
 1102 EASTPORT PLAZA DRIVE
 COLLINGSVILLE, ILLINOIS 62234-6198

F.A. RTE.	SECTION	COUNTY	TOTAL SHEETS	SHEET NO.
312	68-WRS-1	MONROE	760	337

COMPLETION DATE OF FIELD WORK PERFORMED
 LAND SURVEY: JULY, 2011 ROW STAKING: NOVEMBER, 2012

FED. ROAD DIST. NO. ILLINOIS FED. AID PROJECT