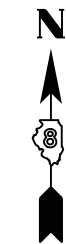
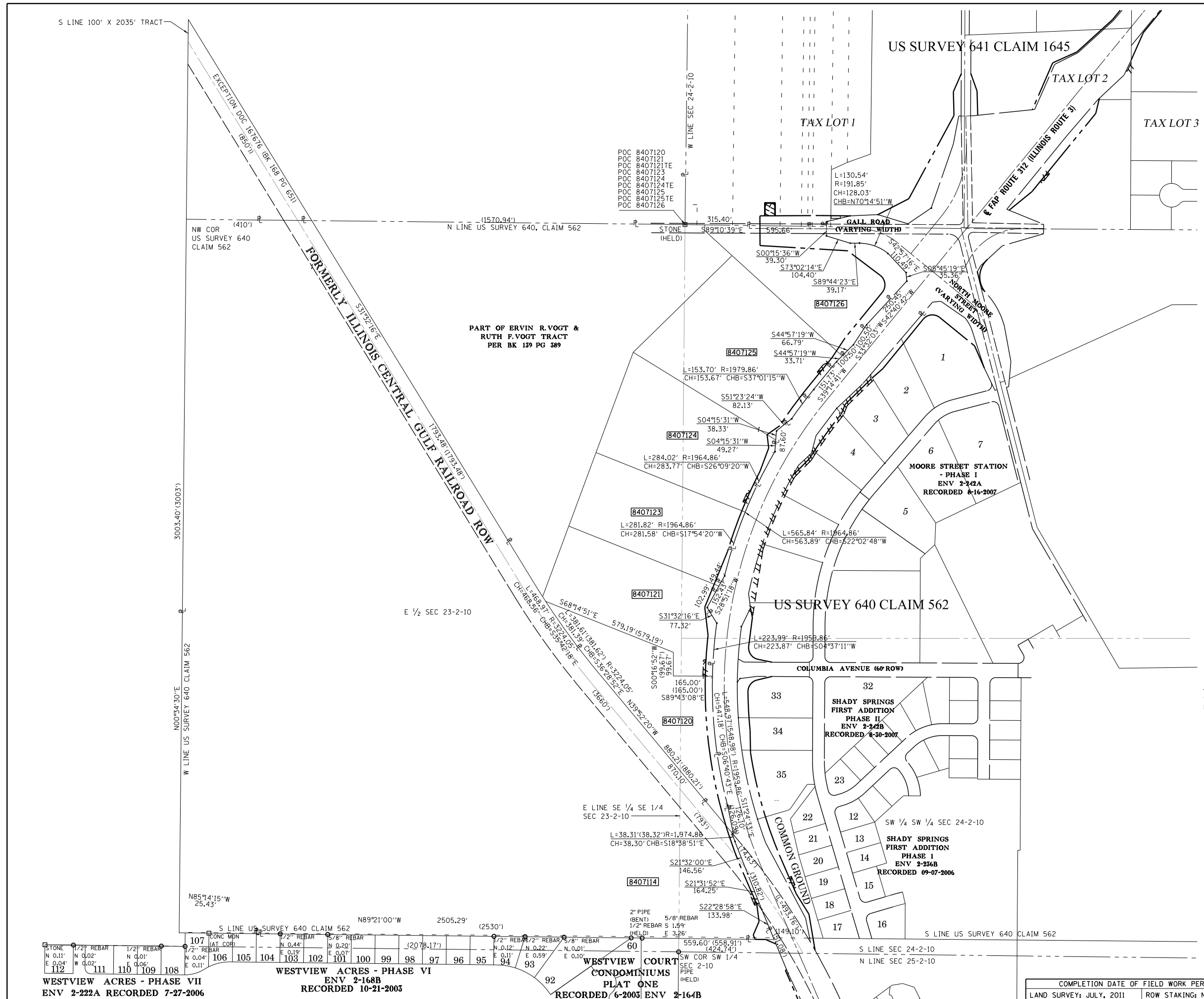


PART OF US SURVEY 640, CLAIM 562, T 2 S, R 10 W, OF THE 3RD PM, MONROE COUNTY, ILLINOIS



SPACE RESERVED FOR RECORDING OFFICER

SEE LEGENDS, TOPOGRAPHIC STATEMENT, SURVEYORS NOTE(S) AND BASIS OF COORDINATES & BEARINGS STATEMENT ON SHEET 2



STATE OF ILLINOIS)
) SS
 COUNTY OF MADISON)

I, GREGORY S. McVICAR, AN ILLINOIS PROFESSIONAL LAND SURVEYOR, CERTIFY THAT I HAVE SURVEYED THE PLAT OF HIGHWAY SHOWN HEREON AND THAT THIS PROFESSIONAL SERVICE CONFORMS TO THE CURRENT ILLINOIS MINIMUM STANDARDS FOR A BOUNDARY SURVEY FOR THE PROPOSED PARCEL TO BE ACQUIRED BY THE STATE OF ILLINOIS, DEPARTMENT OF TRANSPORTATION, SHOWN HEREON.

DATED _____

GREGORY S. McVICAR, PLS NO. 3512
 LICENSE EXPIRATION DATE: 11/30/2014



SHERRILL ASSOCIATES, INC.
 Engineers - Surveyors - Planners
 Professional Design Firm Number 184-001238
 316 North Main Street, Edwardsville, IL 62025
 2727 Telegraph Road, St. Louis, MO 63125

ILLINOIS DEPARTMENT OF TRANSPORTATION
PLAT OF HIGHWAYS
 FAP ROUTE 312 (IL 3)
 SECTION 68-WRS-1
 MONROE COUNTY
 JOB NO. R-98-007-04
 TOTAL HOLDINGS - PARCELS 8407114, 8407120, 8407121, 8407123-126
 SCALE: 1" = 200'
 SHEET 40 OF 46
 SET 2 OF 2

ILLINOIS DEPARTMENT OF TRANSPORTATION
 DIVISION OF HIGHWAYS/REGION 5/DISTRICT 8
 1102 EASTPORT PLAZA DRIVE
 COLLINSVILLE, ILLINOIS 62234-6198

F.A. RT.	SECTION	COUNTY	TOTAL SHEETS	SHEET NO.
312	68-WRS-1	MONROE	760	340

COMPLETION DATE OF FIELD WORK PERFORMED
 LAND SURVEY: JULY, 2011 ROW STAKING: NOVEMBER, 2012

FED. ROAD DIST. NO. ILLINOIS FED. AID PROJECT

STONE	7/2" REBAR	1/2" REBAR	CONC MDN (AT COR)	7/2" REBAR	5/8" REBAR	7/2" REBAR	7/2" REBAR	7/8" REBAR	2" PIPE (BENT)	5/8" REBAR	1/2" REBAR	1.5" PIPE (HELD)	3.2" PIPE (HELD)
112	N 0.11' E 0.04'	N 0.02' E 0.06'	N 0.04' E 0.11'	N 0.44' E 0.19'	N 0.20' E 0.07'	N 0.12' E 0.11'	N 0.22' E 0.59'	N 0.01' E 0.10'	559.60' (550.91')	1/2" REBAR S 1.89'	1.5" PIPE (HELD)	3.2" PIPE (HELD)	