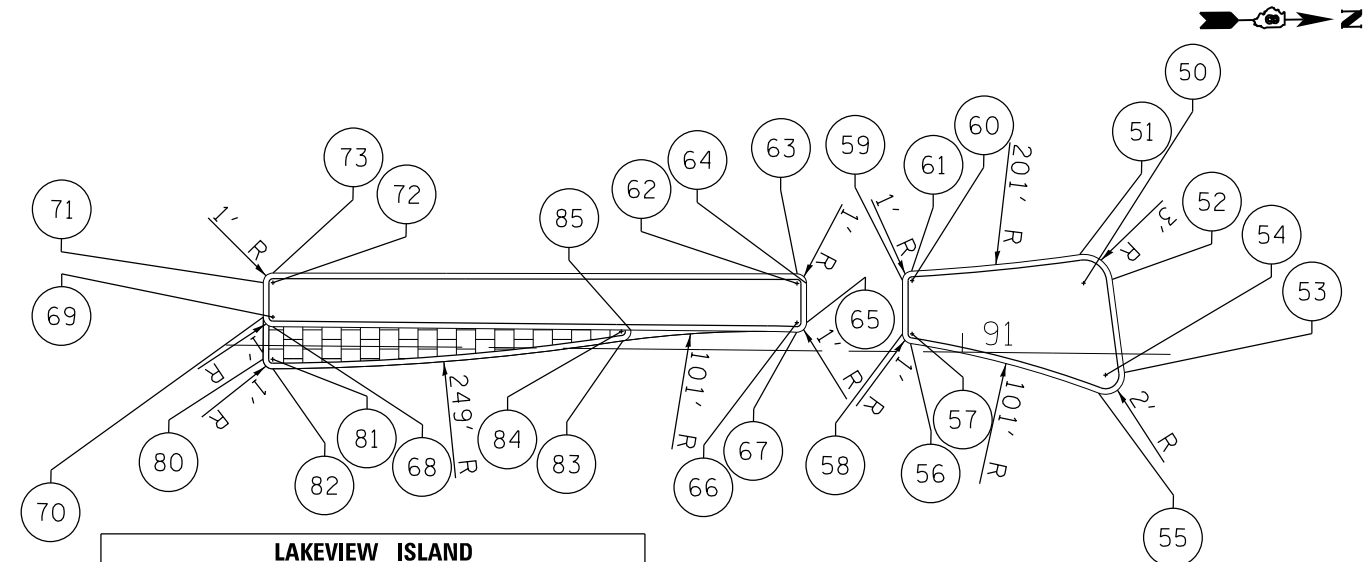
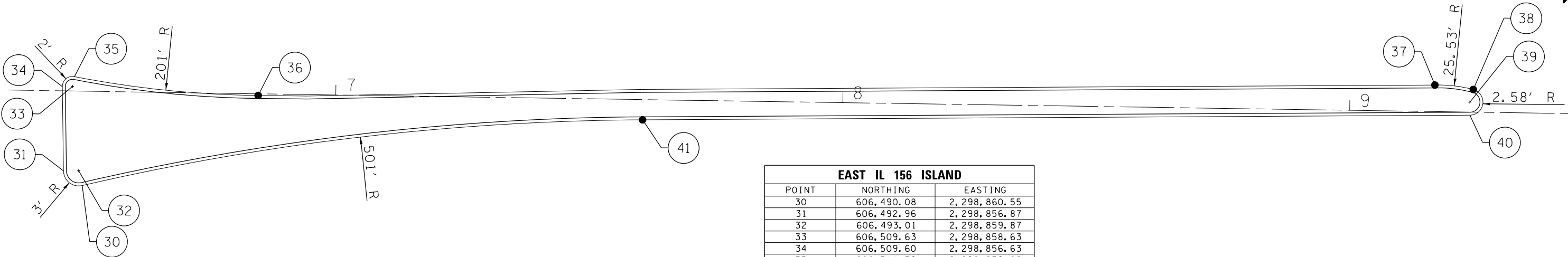


WEST IL 156 ISLAND		
POINT	NORTHING	EASTING
1	606,511.17	2,298,680.98
2	606,511.16	2,298,681.98
3	606,512.16	2,298,681.99
4	606,512.12	2,298,694.01
5	606,511.12	2,298,694.01
6	606,511.10	2,298,695.01
7	606,507.44	2,298,694.90
8	606,507.46	2,298,693.90
9	606,506.47	2,298,693.78
10	606,507.38	2,298,682.38
11	606,508.40	2,298,681.94
12	606,508.42	2,298,680.94
13	606,511.40	2,298,705.02
14	606,511.37	2,298,706.02
15	606,512.37	2,298,705.97
16	606,514.01	2,298,723.39
17	606,511.04	2,298,723.80
18	606,511.42	2,298,726.78
19	606,500.30	2,298,728.21
20	606,500.05	2,298,726.22
21	606,498.19	2,298,725.47
22	606,504.40	2,298,705.63
23	606,505.38	2,298,705.85
24	606,505.41	2,298,704.85

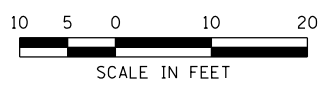


LAKEVIEW ISLAND		
POINT	NORTHING	EASTING
50	606,437.92	2,298,788.23
51	606,437.50	2,298,785.26
52	606,440.89	2,298,787.83
53	606,442.18	2,298,797.54
54	606,440.19	2,298,797.81
55	606,439.49	2,298,799.68
56	606,419.90	2,298,794.51
57	606,420.06	2,298,793.52
58	606,419.06	2,298,793.52
59	606,419.06	2,298,787.97
60	606,420.06	2,298,787.97
61	606,420.01	2,298,786.97
62	606,408.06	2,298,788.26
63	606,408.07	2,298,787.26
64	606,409.06	2,298,788.26
65	606,409.06	2,298,792.33

LAKEVIEW ISLAND		
POINT	NORTHING	EASTING
66	606,408.06	2,298,792.33
67	606,408.02	2,298,793.33
68	606,353.43	2,298,792.77
69	606,353.44	2,298,791.77
70	606,352.44	2,298,791.77
71	606,352.45	2,298,788.17
72	606,353.45	2,298,788.17
73	606,353.45	2,298,787.17
80	606,352.43	2,298,796.16
81	606,353.43	2,298,796.16
82	606,353.44	2,298,797.16
83	606,389.90	2,298,794.25
84	606,389.76	2,298,793.26
85	606,390.75	2,298,793.13



EAST IL 156 ISLAND		
POINT	NORTHING	EASTING
30	606,490.08	2,298,860.55
31	606,492.96	2,298,856.87
32	606,493.01	2,298,859.87
33	606,509.63	2,298,858.63
34	606,509.60	2,298,856.63
35	606,511.59	2,298,859.02
36	606,507.87	2,298,895.26
37	606,509.93	2,299,127.35
38	606,509.04	2,299,134.92
39	606,506.55	2,299,134.24
40	606,503.97	2,299,134.26
41	606,503.06	2,298,971.08



LAST SAVED = 1/23/2013
 PEN TABLE = V8-244-441
 PLOT DRIVER = pdfnclayershp21.ctb

FILE NAME =	USER NAME = beriechmann	DESIGNED -	REVISED -
I:\1001100\Phase II - 76817\Cad\T\Plans\078_0876817-sht-intersec-038.dgn		DRAWN -	REVISED -
PLOT SCALE = 20.0000' / in.		CHECKED -	REVISED -
PLOT DATE = 1/25/2013 3:33:11 PM		DATE -	REVISED -

STATE OF ILLINOIS
DEPARTMENT OF TRANSPORTATION



INTERSECTION DETAIL
 IL ROUTE 156 & LAKEVIEW DRIVE

F.A.P. RTE. 312	SECTION 68-WRS-1	COUNTY MONROE	TOTAL SHEETS 760	SHEET NO. 353
CONTRACT NO. 76817				
ILLINOIS FED. AID PROJECT				

SCALE: 1" = 20' SHEET NO. 3 OF 3 SHEETS STA. TO STA.