

NORTHWEST QUADRANT - "D"		
POINT	NORTHING	EASTING
D1	606,528.15	2,298,987.93
D2	606,528.21	2,298,997.93
D3	606,528.26	2,299,007.93
D4	606,528.34	2,299,022.28
D5	606,529.73	2,299,032.18
D6	606,531.44	2,299,042.03
D7	606,533.49	2,299,051.82
D8	606,535.87	2,299,061.54
D9	606,538.58	2,299,071.16
D10	606,540.86	2,299,078.47
D11	606,544.98	2,299,087.56
D12	606,550.96	2,299,095.55
D13	606,558.53	2,299,102.06
D14	606,567.32	2,299,106.78
D15	606,576.92	2,299,109.50
D16	606,589.05	2,299,109.92
D17	606,601.44	2,299,104.78

NORTHWEST ISLAND - "E"		
POINT	NORTHING	EASTING
E1	606,550.58	2,299,226.58
E2	606,544.69	2,299,234.66
E3	606,539.14	2,299,242.98
E4	606,533.93	2,299,251.52
E5	606,529.09	2,299,260.26
E6	606,524.55	2,299,269.32
E7	606,520.55	2,299,269.26
E8	606,521.07	2,299,234.49
E9	606,548.98	2,299,222.91

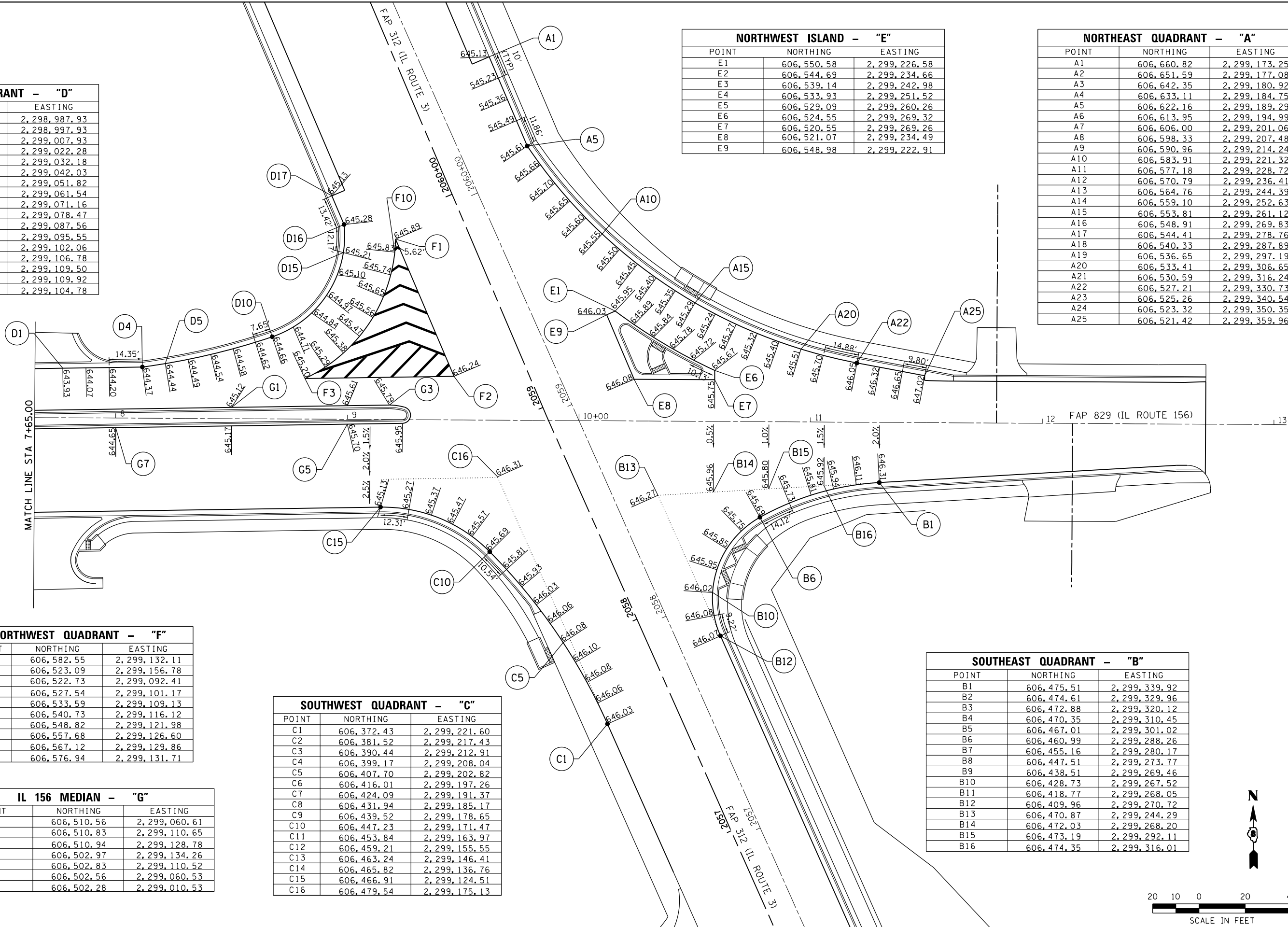
NORTHEAST QUADRANT - "A"		
POINT	NORTHING	EASTING
A1	606,660.82	2,299,173.25
A2	606,651.59	2,299,177.08
A3	606,642.35	2,299,180.92
A4	606,633.11	2,299,184.75
A5	606,622.16	2,299,189.29
A6	606,613.95	2,299,194.99
A7	606,606.00	2,299,201.06
A8	606,598.33	2,299,207.48
A9	606,590.96	2,299,214.24
A10	606,583.91	2,299,221.32
A11	606,577.18	2,299,228.72
A12	606,570.79	2,299,236.41
A13	606,564.76	2,299,244.39
A14	606,559.10	2,299,252.63
A15	606,553.81	2,299,261.12
A16	606,548.91	2,299,269.83
A17	606,544.41	2,299,278.76
A18	606,540.33	2,299,287.89
A19	606,536.65	2,299,297.19
A20	606,533.41	2,299,306.65
A21	606,530.59	2,299,316.24
A22	606,527.21	2,299,330.73
A23	606,525.26	2,299,340.54
A24	606,523.32	2,299,350.35
A25	606,521.42	2,299,359.96

NORTHWEST QUADRANT - "F"		
POINT	NORTHING	EASTING
F1	606,582.55	2,299,132.11
F2	606,523.09	2,299,156.78
F3	606,522.73	2,299,092.41
F4	606,527.54	2,299,101.17
F5	606,533.59	2,299,109.13
F6	606,540.73	2,299,116.12
F7	606,548.82	2,299,121.98
F8	606,557.68	2,299,126.60
F9	606,567.12	2,299,129.86
F10	606,576.94	2,299,131.71

SOUTHWEST QUADRANT - "C"		
POINT	NORTHING	EASTING
C1	606,372.43	2,299,221.60
C2	606,381.52	2,299,217.43
C3	606,390.44	2,299,212.91
C4	606,399.17	2,299,208.04
C5	606,407.70	2,299,202.82
C6	606,416.01	2,299,197.26
C7	606,424.09	2,299,191.37
C8	606,431.94	2,299,185.17
C9	606,439.52	2,299,178.65
C10	606,447.23	2,299,171.47
C11	606,453.84	2,299,163.97
C12	606,459.21	2,299,155.55
C13	606,463.24	2,299,146.41
C14	606,465.82	2,299,136.76
C15	606,466.91	2,299,124.51
C16	606,479.54	2,299,175.13

SOUTHEAST QUADRANT - "B"		
POINT	NORTHING	EASTING
B1	606,475.51	2,299,339.92
B2	606,474.61	2,299,329.96
B3	606,472.88	2,299,320.12
B4	606,470.35	2,299,310.45
B5	606,467.01	2,299,301.02
B6	606,460.99	2,299,288.26
B7	606,455.16	2,299,280.17
B8	606,447.51	2,299,273.77
B9	606,438.51	2,299,269.46
B10	606,428.73	2,299,267.52
B11	606,418.77	2,299,268.05
B12	606,409.96	2,299,270.72
B13	606,470.87	2,299,244.29
B14	606,472.03	2,299,268.20
B15	606,473.19	2,299,292.11
B16	606,474.35	2,299,316.01

IL 156 MEDIAN - "G"		
POINT	NORTHING	EASTING
G1	606,510.56	2,299,060.61
G2	606,510.83	2,299,110.65
G3	606,510.94	2,299,128.78
G4	606,502.97	2,299,134.26
G5	606,502.83	2,299,110.52
G6	606,502.56	2,299,060.53
G7	606,502.28	2,299,010.53



LAST SAVED = 1/23/2013
 PEN TABLE = W3-144-141
 PLOT DRIVER = pdfNCLAYERS.batcf5