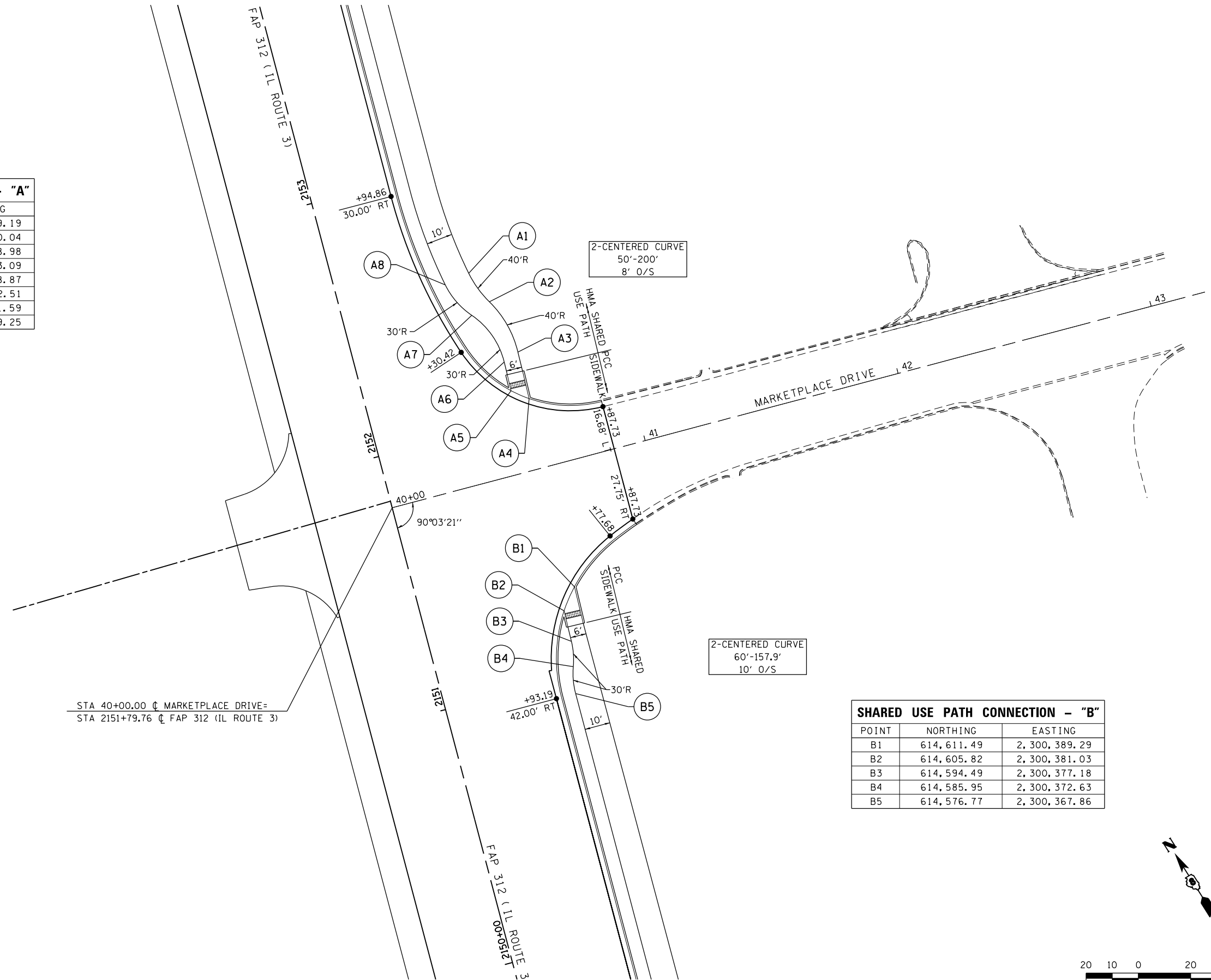
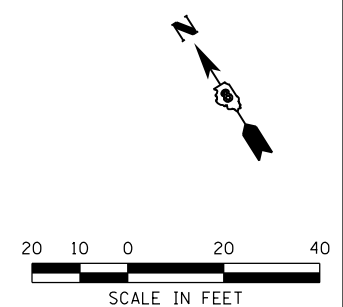


SHARED USE PATH CONNECTION - "A"		
POINT	NORTHING	EASTING
A1	614,734.30	2,300,419.19
A2	614,720.91	2,300,420.04
A3	614,698.84	2,300,418.98
A4	614,681.51	2,300,413.09
A5	614,687.75	2,300,408.87
A6	614,698.46	2,300,412.51
A7	614,720.14	2,300,411.59
A8	614,735.36	2,300,409.25



SHARED USE PATH CONNECTION - "B"		
POINT	NORTHING	EASTING
B1	614,611.49	2,300,389.29
B2	614,605.82	2,300,381.03
B3	614,594.49	2,300,377.18
B4	614,585.95	2,300,372.63
B5	614,576.77	2,300,367.86



LAST SAVED = 1/23/2013
 PEN TABLE = 1/23/2013
 PLOT DRIVER = pdfplotlayers.plt

FILE NAME =	USER NAME = beriechmann	DESIGNED -	REVISED -	STATE OF ILLINOIS DEPARTMENT OF TRANSPORTATION		INTERSECTION DETAILS		F.A.P. RTE.	SECTION	COUNTY	TOTAL SHEETS	SHEET NO.
1:\1001100\Phase II - 76817\Cad\T\Plans\083_0876817-sht-intersec-08.dgn		DRAWN -	REVISED -			312	68-WRS-1	MONROE	760	362		
PLOT SCALE = 40.0000' / in.		CHECKED -	REVISED -			CONTRACT NO. 76817						
PLOT DATE = 1/25/2013 3:33:22 PM		DATE -	REVISED -			ILLINOIS FED. AID PROJECT						
				SCALE: 1" = 20'		SHEET NO. 1 OF 2 SHEETS		STA. TO STA.				