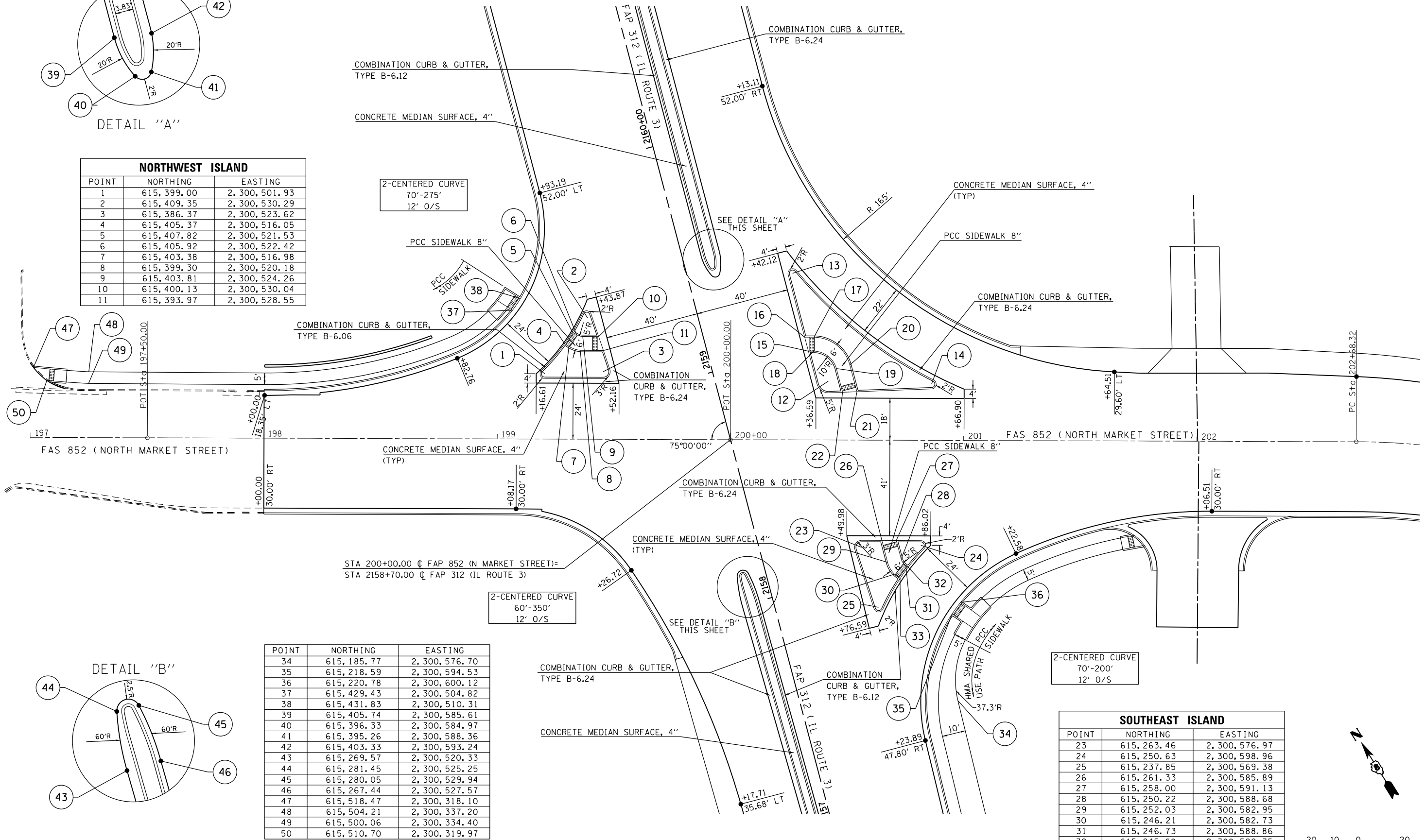


DETAIL "A"

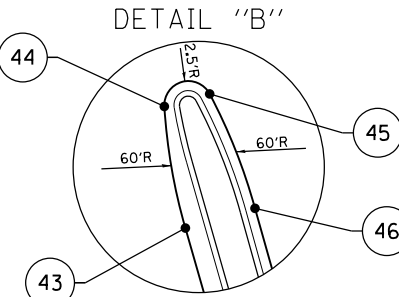
NORTHWEST ISLAND		
POINT	NORTHING	EASTING
1	615,399.00	2,300,501.93
2	615,409.35	2,300,530.29
3	615,386.37	2,300,523.62
4	615,405.37	2,300,516.05
5	615,407.82	2,300,521.53
6	615,405.92	2,300,522.42
7	615,403.38	2,300,516.98
8	615,399.30	2,300,520.18
9	615,403.81	2,300,524.26
10	615,400.13	2,300,530.04
11	615,393.97	2,300,528.55

2-CENTERED CURVE
70'-275'
12' O/S



2-CENTERED CURVE
60'-350'
12' O/S

2-CENTERED CURVE
70'-200'
12' O/S



DETAIL "B"

POINT	NORTHING	EASTING
34	615,185.77	2,300,576.70
35	615,218.59	2,300,594.53
36	615,220.78	2,300,600.12
37	615,429.43	2,300,504.82
38	615,431.83	2,300,510.31
39	615,405.74	2,300,585.61
40	615,396.33	2,300,584.97
41	615,395.26	2,300,588.36
42	615,403.33	2,300,593.24
43	615,269.57	2,300,520.33
44	615,281.45	2,300,525.25
45	615,280.05	2,300,529.94
46	615,267.44	2,300,527.57
47	615,518.47	2,300,318.10
48	615,504.21	2,300,337.20
49	615,500.06	2,300,334.40
50	615,510.70	2,300,319.97

SOUTHEAST ISLAND		
POINT	NORTHING	EASTING
23	615,263.46	2,300,576.97
24	615,250.63	2,300,598.96
25	615,237.85	2,300,569.38
26	615,261.33	2,300,585.89
27	615,258.00	2,300,591.13
28	615,250.22	2,300,588.68
29	615,252.03	2,300,582.95
30	615,246.21	2,300,582.73
31	615,246.73	2,300,588.86
32	615,245.60	2,300,589.35
33	615,243.36	2,300,583.78

LAST SAVED = 1/23/2013
 PEN TABLE = 1/23/2013
 PLOT DRIVER = pdfplotlayers.plt

FILE NAME =	USER NAME = beriechmann	DESIGNED -	REVISED -
1:\1001100\Phase II - 76817\Cad\T\Plans\084_0876817-sht-intersec-09.dgn		DRAWN -	REVISED -
PLOT SCALE = 40.0000' / in.		CHECKED -	REVISED -
PLOT DATE = 1/25/2013 3:33:24 PM		DATE -	REVISED -

STATE OF ILLINOIS
DEPARTMENT OF TRANSPORTATION



INTERSECTION DETAILS
 FAP 312 (IL ROUTE 3) & FAS 852 (NORTH MARKET STREET)

F.A.P. RTE. 312	SECTION 68-WRS-1	COUNTY MONROE	TOTAL SHEETS 760	SHEET NO. 364
CONTRACT NO. 76817				
ILLINOIS FED. AID PROJECT				

SCALE: 1" = 20' SHEET NO. 1 OF 2 SHEETS STA. TO STA.