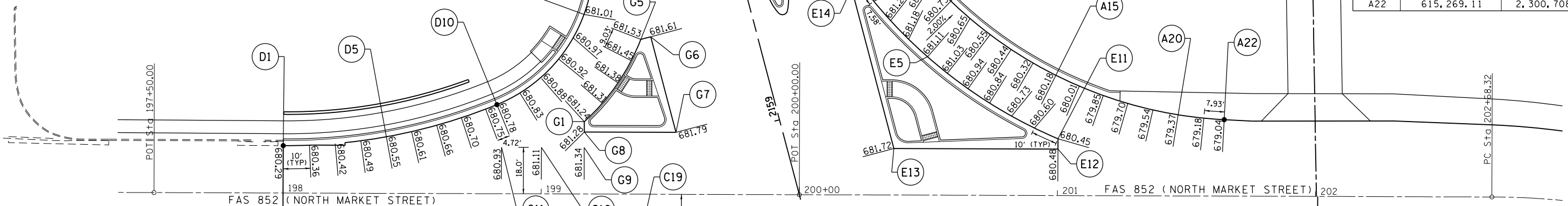


NORTHWEST QUADRANT - "D"		
POINT	NORTHING	EASTING
D1	615,455.39	2,300,395.44
D2	615,450.19	2,300,403.98
D3	615,445.38	2,300,412.75
D4	615,440.99	2,300,421.73
D5	615,437.02	2,300,430.91
D6	615,433.48	2,300,440.26
D7	615,430.38	2,300,449.77
D8	615,427.72	2,300,459.41
D9	615,425.52	2,300,469.16
D10	615,424.64	2,300,473.80
D11	615,423.70	2,300,483.74
D12	615,424.43	2,300,493.71
D13	615,426.80	2,300,503.41
D14	615,430.75	2,300,512.58
D15	615,436.17	2,300,520.98
D16	615,442.90	2,300,528.36
D17	615,450.76	2,300,534.52
D18	615,459.54	2,300,539.28
D19	615,465.66	2,300,541.59

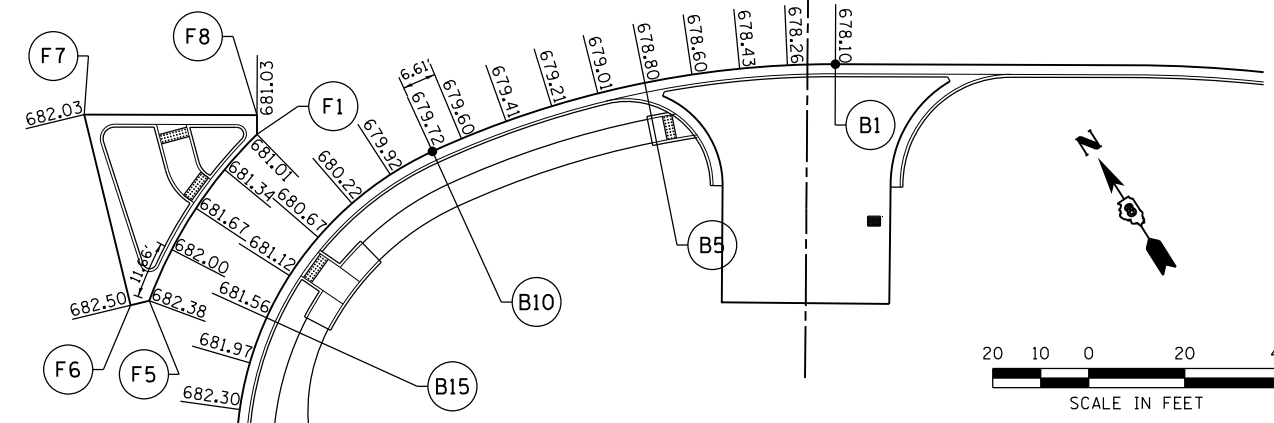
NORTHWEST ISLAND - "G"		
POINT	NORTHING	EASTING
G1	615,400.96	2,300,498.85
G2	615,403.27	2,300,508.58
G3	615,406.71	2,300,517.96
G4	615,411.25	2,300,526.87
G5	615,416.22	2,300,534.39
G6	615,415.02	2,300,538.21
G7	615,378.49	2,300,526.69
G8	615,397.59	2,300,496.70
G9	615,392.53	2,300,493.48
G10	615,401.45	2,300,479.47
G11	615,409.73	2,300,466.47

NORTHEAST ISLAND - "E"		
POINT	NORTHING	EASTING
E1	615,388.09	2,300,617.79
E2	615,380.52	2,300,618.58
E3	615,370.63	2,300,620.09
E4	615,360.84	2,300,622.13
E5	615,351.18	2,300,624.68
E6	615,341.66	2,300,627.75
E7	615,332.32	2,300,631.32
E8	615,323.19	2,300,635.39
E9	615,314.28	2,300,639.94
E10	615,305.67	2,300,644.94
E11	615,297.30	2,300,650.41
E12	615,293.93	2,300,648.26
E13	615,328.06	2,300,594.67
E14	615,389.29	2,300,613.98

NORTHEAST QUADRANT - "A"		
POINT	NORTHING	EASTING
A1	615,453.39	2,300,646.77
A2	615,443.77	2,300,644.05
A3	615,434.00	2,300,641.92
A4	615,424.12	2,300,640.39
A5	615,414.17	2,300,639.46
A6	615,404.17	2,300,639.13
A7	615,394.18	2,300,639.41
A8	615,384.22	2,300,640.30
A9	615,374.33	2,300,641.78
A10	615,364.55	2,300,643.86
A11	615,354.92	2,300,646.53
A12	615,345.46	2,300,649.78
A13	615,336.22	2,300,653.60
A14	615,327.23	2,300,657.97
A15	615,318.51	2,300,662.87
A16	615,310.11	2,300,668.30
A17	615,302.06	2,300,674.22
A18	615,294.38	2,300,680.62
A19	615,287.10	2,300,687.47
A20	615,280.25	2,300,694.75
A21	615,273.85	2,300,702.44
A22	615,269.11	2,300,708.79



SOUTHWEST QUADRANT - "C"		
POINT	NORTHING	EASTING
C1	615,198.02	2,300,474.33
C2	615,207.66	2,300,477.01
C3	615,217.36	2,300,479.41
C4	615,227.13	2,300,481.53
C5	615,236.96	2,300,483.37
C6	615,246.84	2,300,484.94
C7	615,256.76	2,300,486.21
C8	615,266.71	2,300,487.21
C9	615,276.68	2,300,487.92
C10	615,286.67	2,300,488.35
C11	615,296.67	2,300,488.49
C12	615,307.92	2,300,488.30
C13	615,317.84	2,300,487.15
C14	615,327.44	2,300,484.36
C15	615,336.43	2,300,480.03
C16	615,344.59	2,300,474.26
C17	615,351.67	2,300,467.22
C18	615,356.58	2,300,460.57
C19	615,350.58	2,300,492.32
C20	615,336.21	2,300,514.87
C21	615,307.07	2,300,506.33



SOUTHEAST ISLAND - "F"		
POINT	NORTHING	EASTING
F1	615,248.37	2,300,602.52
F2	615,245.77	2,300,592.86
F3	615,242.16	2,300,583.55
F4	615,237.58	2,300,574.66
F5	615,231.08	2,300,564.99
F6	615,232.36	2,300,561.20
F7	615,271.11	2,300,574.27
F8	615,251.74	2,300,604.66

LAST SAVED = 1/24/2013
 PEN TABLE = 1/24/2013
 PLOT DRIVER = pdfnclayers.plt

FILE NAME =	USER NAME = beriechmann	DESIGNED -	REVISED -	STATE OF ILLINOIS DEPARTMENT OF TRANSPORTATION		INTERSECTION DETAILS FAP 312 (IL ROUTE 3) & FAS 852 (NORTH MARKET STREET)		F.A.P. RTE.	SECTION	COUNTY	TOTAL SHEETS	SHEET NO.
1:\1001100\Phase II - 76817\Cad\T\Plans\085_0876817-sht-intersec-09A.dgn	DRAWN -	REVISED -	312					68-WRS-1	MONROE	760	365	
PLOT SCALE = 40.0000' / in.	CHECKED -	REVISED -	CONTRACT NO. 76817									
PLOT DATE = 1/25/2013 3:33:25 PM	DATE -	REVISED -	ILLINOIS FED. AID PROJECT									