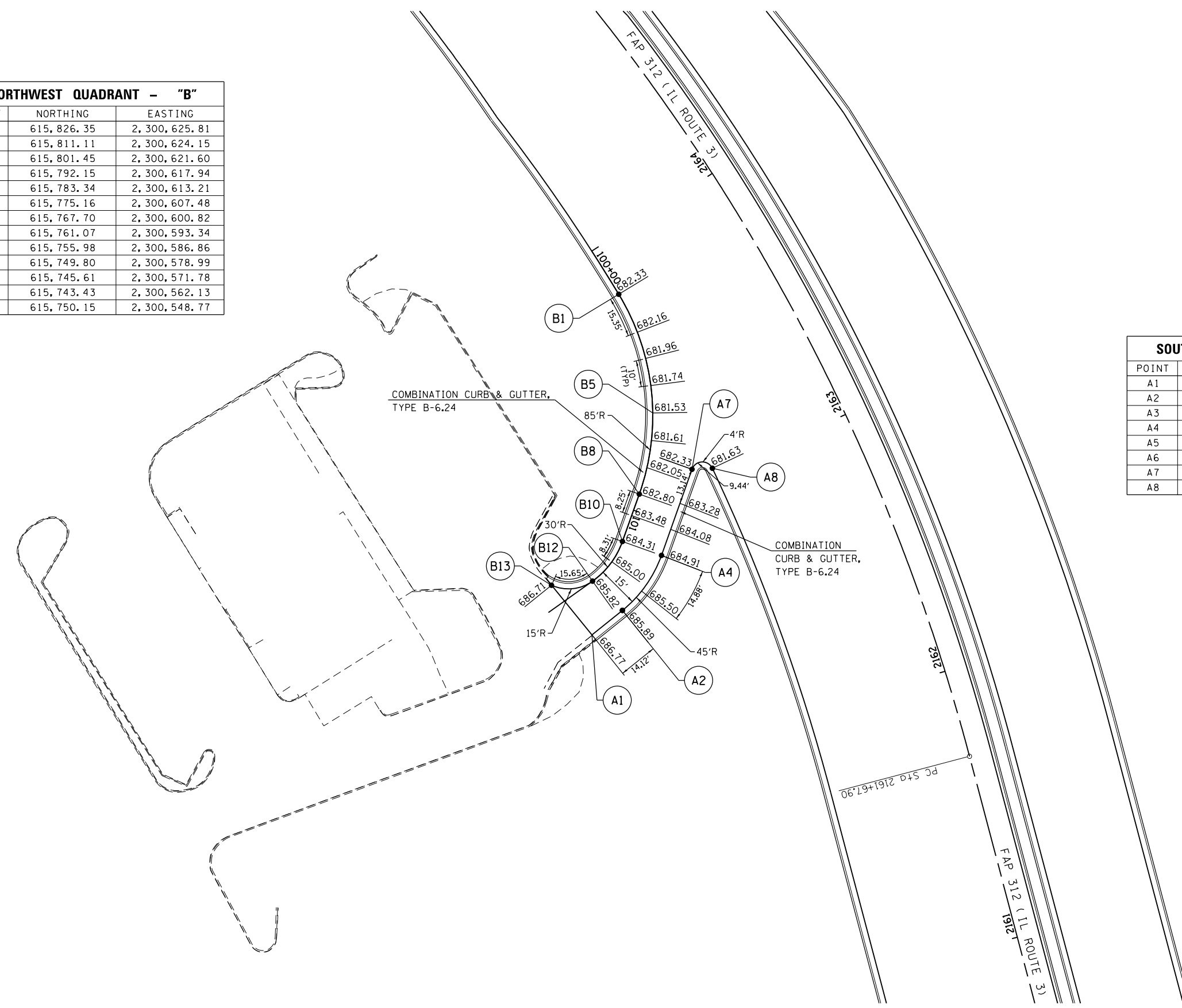


NORTHWEST QUADRANT - "B"		
POINT	NORTHING	EASTING
B1	615,826.35	2,300,625.81
B2	615,811.11	2,300,624.15
B3	615,801.45	2,300,621.60
B4	615,792.15	2,300,617.94
B5	615,783.34	2,300,613.21
B6	615,775.16	2,300,607.48
B7	615,767.70	2,300,600.82
B8	615,761.07	2,300,593.34
B9	615,755.98	2,300,586.86
B10	615,749.80	2,300,578.99
B11	615,745.61	2,300,571.78
B12	615,743.43	2,300,562.13
B13	615,750.15	2,300,548.77

SOUTHWEST QUADRANT - "A"		
POINT	NORTHING	EASTING
A1	615,727.08	2,300,551.51
A2	615,728.67	2,300,565.54
A3	615,730.89	2,300,575.27
A4	615,738.00	2,300,588.26
A5	615,744.18	2,300,596.12
A6	615,750.36	2,300,603.99
A7	615,758.48	2,300,614.32
A8	615,754.84	2,300,620.76



LAST SAVED = 1/23/2013 3:33:26 PM
 PEN TABLE = 1/23/2013 3:33:26 PM
 PLOT DRIVER = pdfplotlayers.batcf9

FILE NAME =	USER NAME = beriechmann	DESIGNED -	REVISED -
I:\1001100\Phase II - 76817\Cad\T\Plans\086_0876817-sht-intersec-10.dgn		DRAWN -	REVISED -
		CHECKED -	REVISED -
PLOT SCALE = 40.0000' / in.		DATE -	REVISED -
PLOT DATE = 1/25/2013 3:33:26 PM			

STATE OF ILLINOIS
DEPARTMENT OF TRANSPORTATION



ENTRANCE DETAILS
 STA 2163+80.13 - FAP 312 (IL ROUTE 3)

F.A.P. RTE.	SECTION	COUNTY	TOTAL SHEETS	SHEET NO.
312	68-WRS-1	MONROE	760	366
CONTRACT NO. 76817				
ILLINOIS FED. AID PROJECT				

SCALE: 1" = 20' SHEET NO. 1 OF 1 SHEETS STA. TO STA.