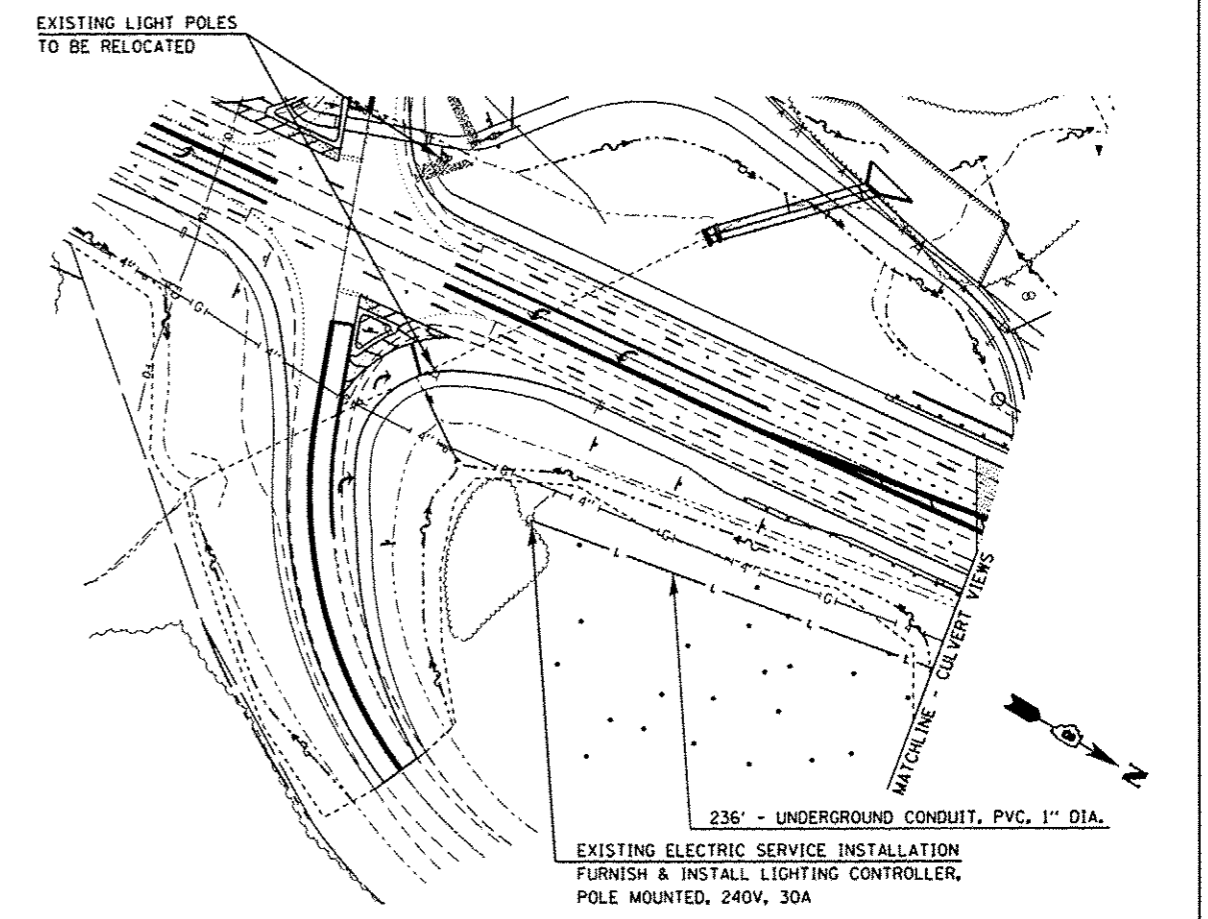
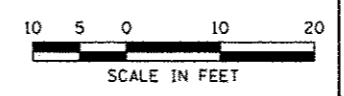
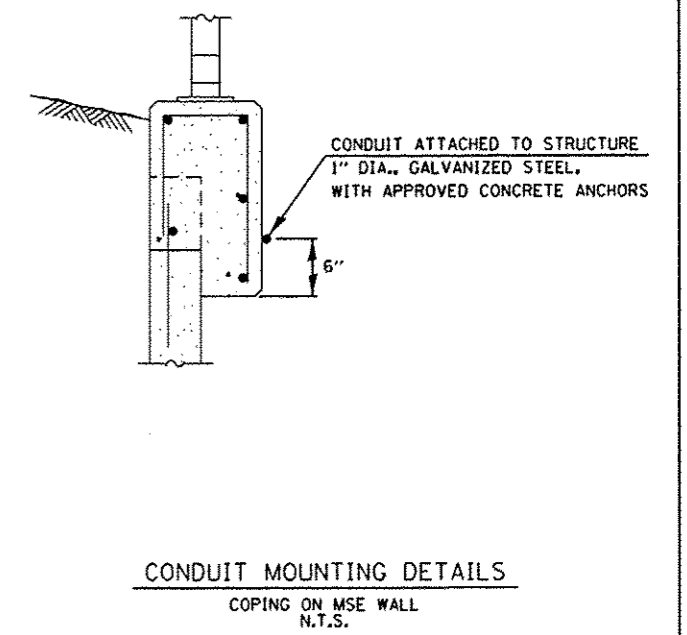
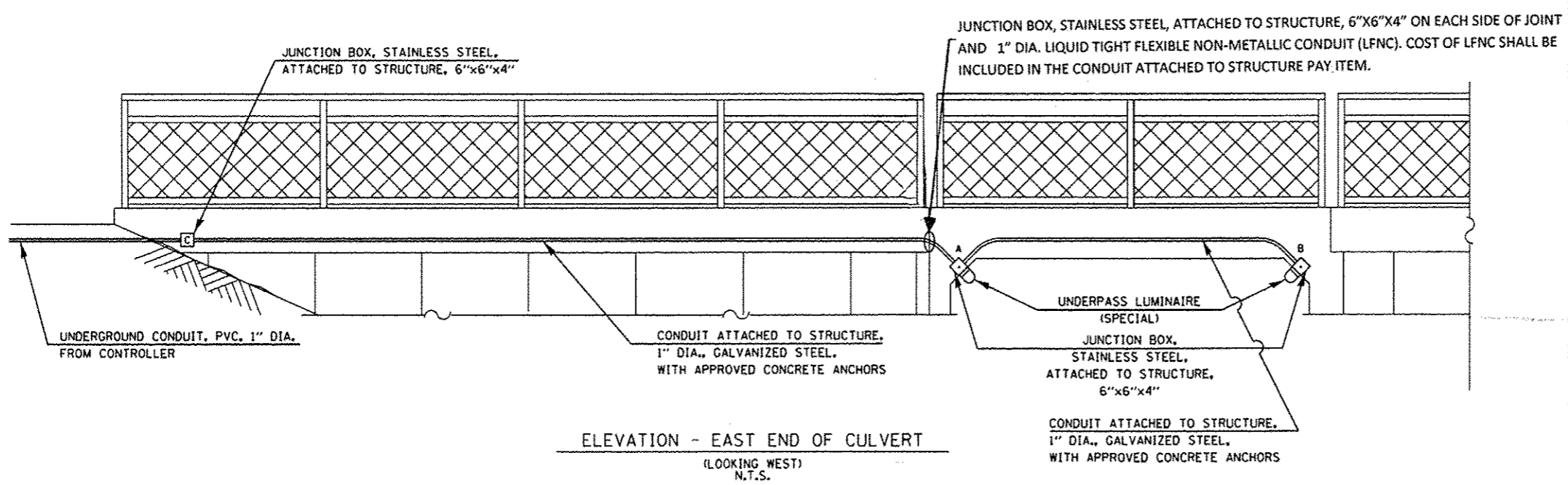
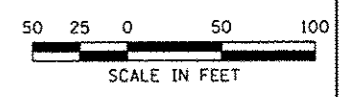


NOTE:
ALL HARDWARE SHALL BE STAINLESS STEEL. ALL CONDUIT STRAPS, CLAMPS, HANGERS, FITTINGS AND APPURTENANCES SHALL BE HOT DIP GALVANIZED OR STAINLESS STEEL

LIGHTING LOCATION - CULVERT



LIGHTING LOCATION - PLAN



LAST SAVED = 3/13/2013 10:51:06 AM
PEN TABLE = 10116617.tbl
PLOT DRIVER = 3dplotdrv.exe

FILE NAME = 1\1201188\Phase II - 76817\Cad\T\Plane	USER NAME = bschmidt	DESIGNED -	REVISED -
200_0976817-shc-light.dgn	200_0976817-shc-light.dgn	DRAWN -	REVISED -
PLOT SCALE = 20,0000' / 1"		CHECKED -	REVISED -
PLOT DATE = 3/15/2013 7:29:05 AM		DATE -	REVISED -

STATE OF ILLINOIS
DEPARTMENT OF TRANSPORTATION

HORNER & SHIRIN, INC.
ENGINEERS

LIGHTING DETAILS
PEDESTRIAN BOX CULVERT

SCALE: SHEET 2 OF 2 SHEETS STA. TO STA.

F.A.P. RTE.	SECTION	COUNTY	TOTAL SHEETS	SHEET NO.
312	68-WRS-1	MONROE	760	413
CONTRACT NO. 76817				
ILLINOIS FED. AID PROJECT				