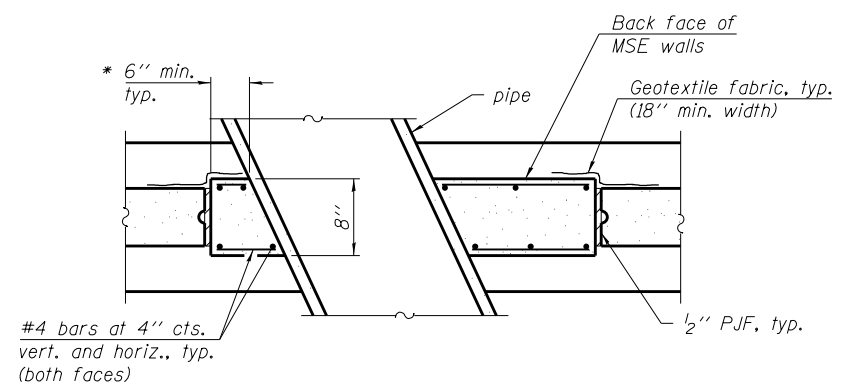


*****Overexcavation beyond the limits of structure excavation. This area not measured for payment.

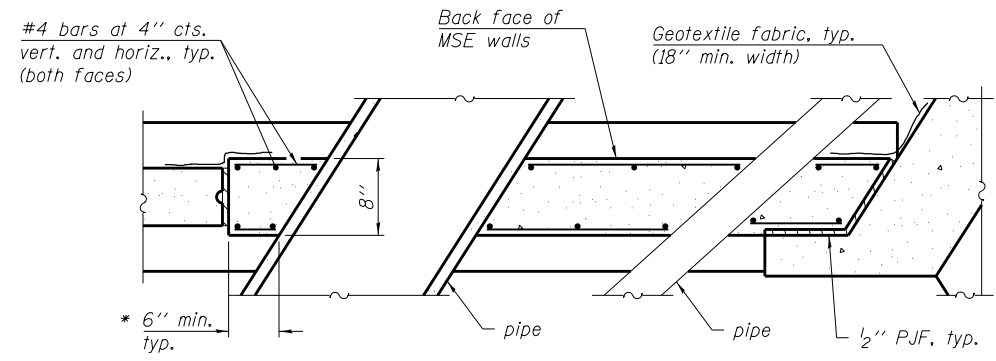
*****Backfill overexcavation with same material as used for select backfill.

SECTION THRU MSE WALL

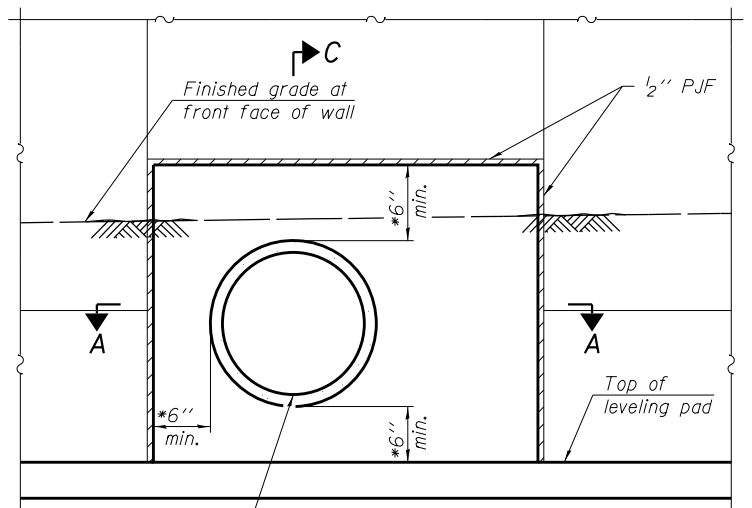
- ** 1:50 (V:H)
- *** Varies, 1:3.7 (V:H) max., 1:4 (V:H) min., NW Wing
Varies, 1:3 (V:H) max., 1:7.7 (V:H) min., NE Wing
Varies, 1:4.9 (V:H) max., 1:21.9 (V:H) min., SE Wing
1:3 (V:H) SW Wing
- **** Varies, 32'-5" max., 4'-9" min., NW Wing
Varies, 35'-6 1/8" max., 3'-0" min., SE Wing
4'-9" SW Wing
3'-0" NE Wing



SECTION A-A

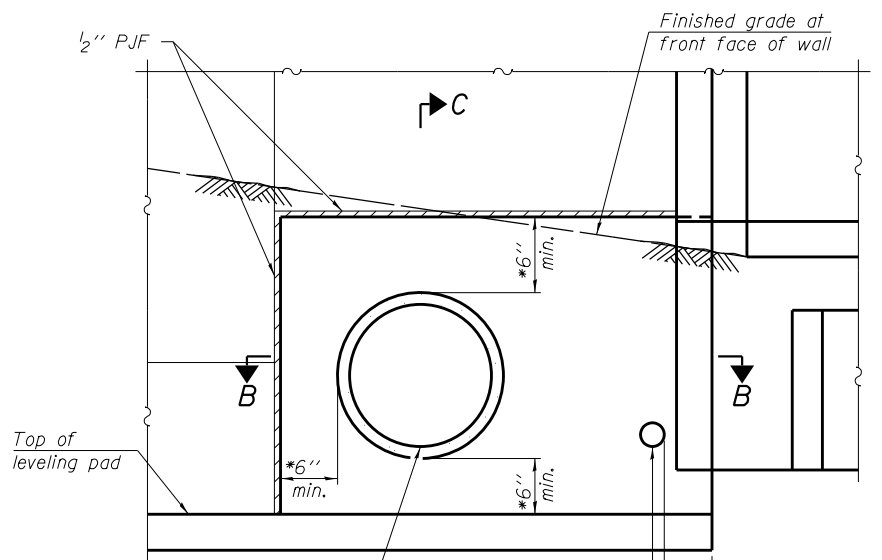


SECTION B-B



Sta. 2019+64.15
Invert Elev. 610.78 at wall
24" I.D. concrete pipe

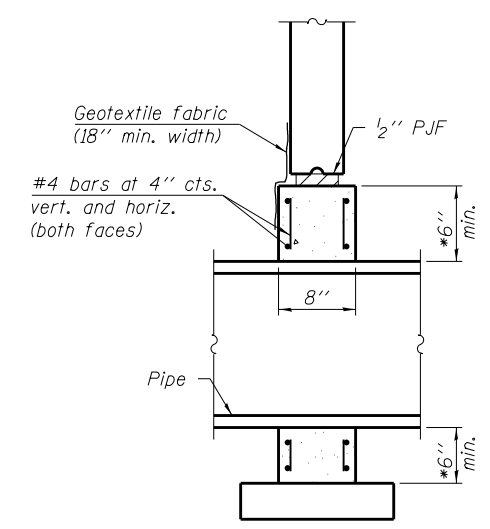
24" Ø PIPE DETAIL
(Elevation View - NE Wing)



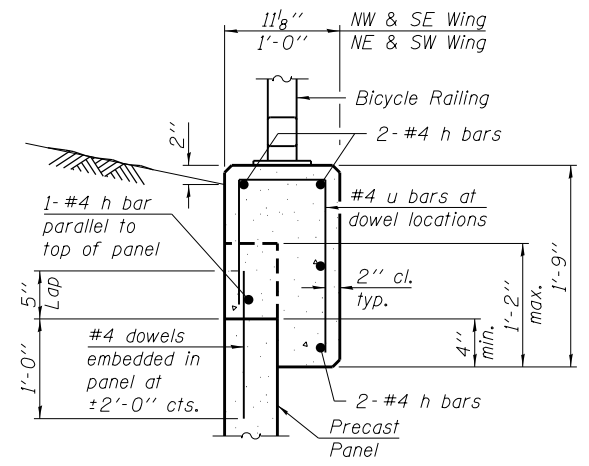
Sta. 2019+19.31
Invert Elev. 610.00 at wall
24" I.D. concrete pipe

Sta. 2019+17.30
Invert Elev. 610.00 at wall
4" I.D. plastic pipe

4" & 24" Ø PIPE DETAIL
(Elevation View - NW Wing)



SECTION C-C



CAST IN PLACE COPING FOR PRECAST FACE PANELS

Notes:
All stations, offsets, and dimensions measured along back face of precast panels, unless shown otherwise.
For MSE wingwall details, see sheet 9 of 20.
For MSE wingwall to culvert connection details, see sheet 7 of 20.
For Bicycle Railing details, see sheet 11 of 20.

*Wall supplier to determine required dimensions.