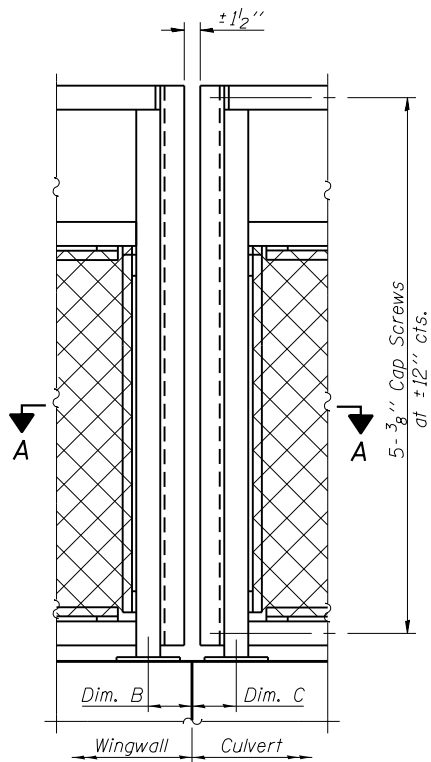
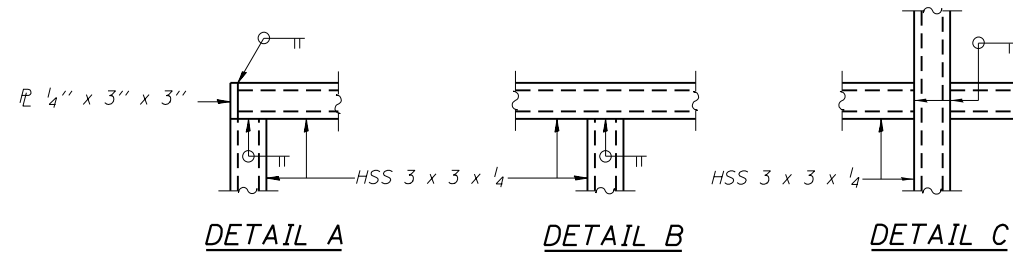


**BICYCLE RAILING**



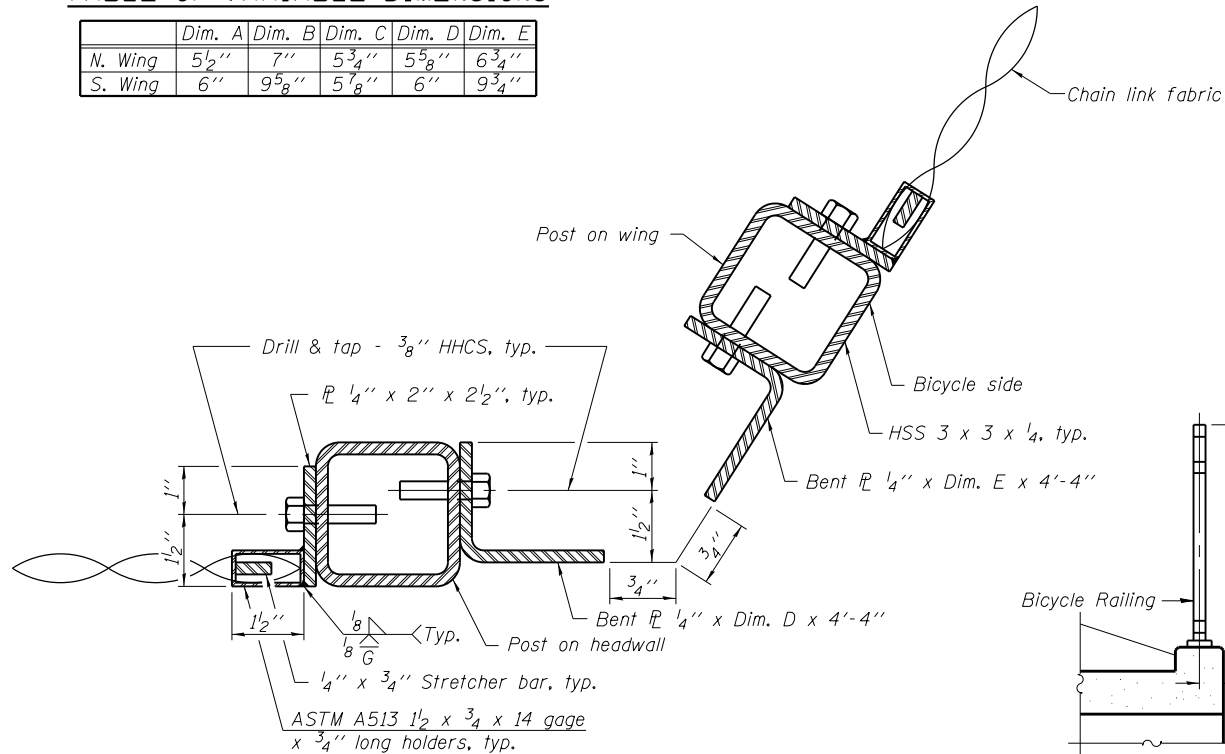
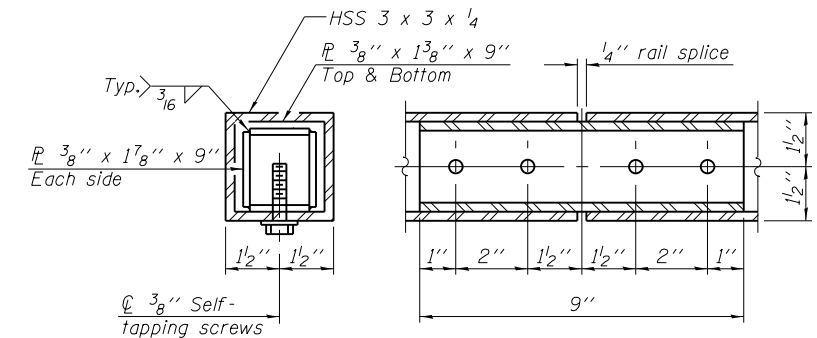
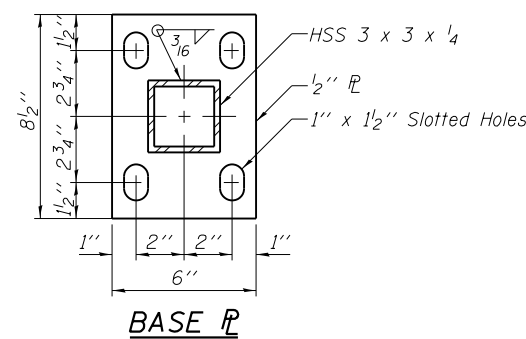
**BICYCLE RAILING**

All steel rail elements shall be galvanized according to Article 509.05 of the Standard Specifications.

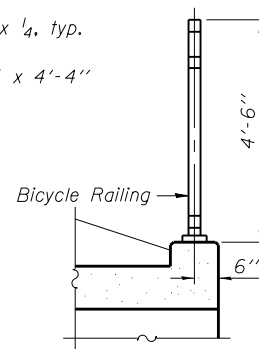


**TABLE OF VARIABLE DIMENSIONS**

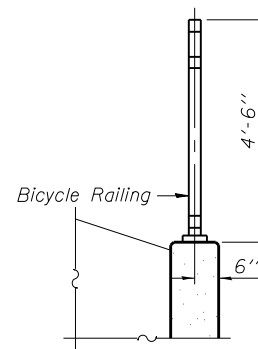
	Dim. A	Dim. B	Dim. C	Dim. D	Dim. E
N. Wing	5 1/2"	7"	5 3/4"	5 5/8"	6 3/4"
S. Wing	6"	9 5/8"	5 1/8"	6"	9 3/4"



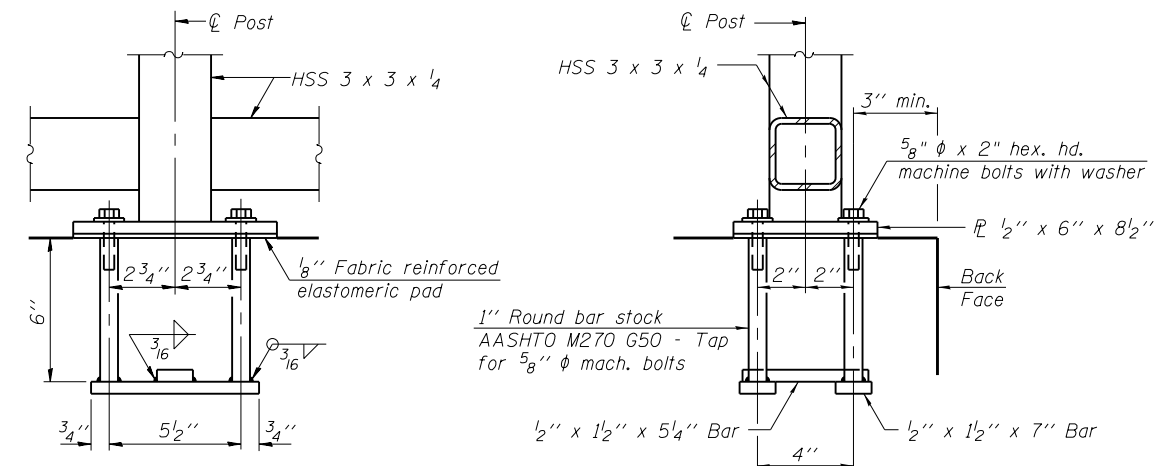
**SECTION A-A**



**SECTION THRU HEADWALL**



**SECTION THRU WING**



**ANCHOR BOLT DETAILS**

In lieu of the cast-in-place anchor device shown, the Contractor has the option of drilling and setting 5/8"  $\phi$  anchor rods according to Article 509.06 of the Standard Specifications. Embedment shall be according to the manufacturer's specifications.

**BILL OF MATERIAL**

Item	Unit	Quantity
Bicycle Railing	Foot	35

LAST SAVED = 1/23/2013 11:46:19 AM  
 PEN TABLE = 1/23/2013 11:46:19 AM  
 PLOT DRIVER = pdfplotlayers.plt

FILE NAME = I:\1001100\Phase II - 76817\Cad\S\Plans\Headwalls-76817.dgn

USER NAME = elagemann  
 DRAWN = E.M. Lagemann  
 CHECKED = K.L. Hayes  
 DATE = 12/21/12

DESIGNED = E.M. Lagemann  
 REVISED =  
 CHECKED = K.L. Hayes  
 REVISED =  
 DATE = 12/21/12

REVISIONS

STATE OF ILLINOIS  
 DEPARTMENT OF TRANSPORTATION

HORNER &  
 SHIRIN, INC.  
 ENGINEERS

BICYCLE RAILING DETAILS  
 CULVERT AT STA. 2016+44.66

SCALE:

SHEET NO. 3 OF 3 SHEETS

STA. 2015+24.21 TO STA. 2017+98.20

F.A.P. RE. SECTION COUNTY TOTAL SHEETS SHEET NO.  
 312 68-WRS-1 MONROE 760 436  
 CONTRACT NO. 76817  
 ILLINOIS FED. AID PROJECT