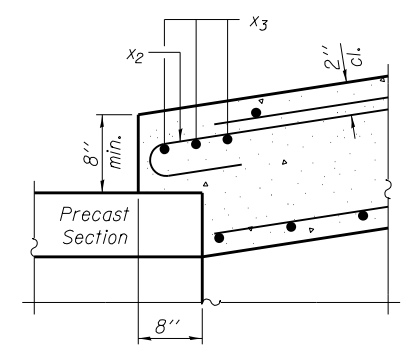
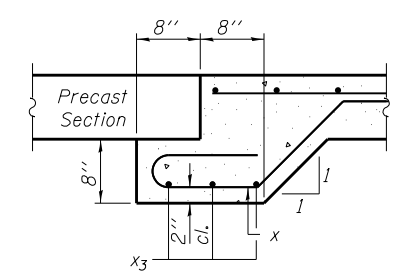


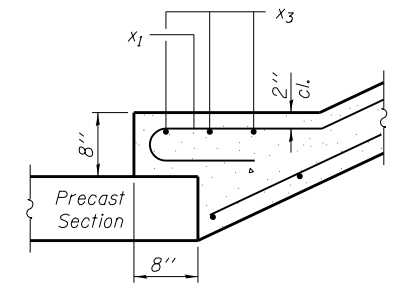
LONGITUDINAL SECTION



SECTION B-B



SECTION C-C

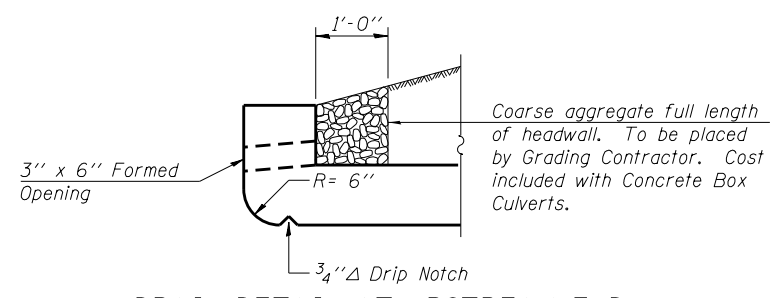


SECTION D-D

- * Cut bars to fit.
- ** Elev. 623.48, N. Corner
- Elev. 623.66, S. Corner
- *** 7-#5 v₂ bars at 12" cts., N. Wall
- 13-#5 v₂ bars at 12" cts., S. Wall
- **** 6-#5 h₁₁ bars at 12" cts., N. Wall
- 6-#5 h₁₀ bars at 12" cts., S. Wall

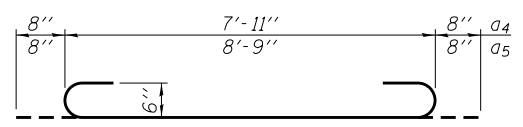
BILL OF MATERIAL

Bar	No.	Size	Length	Shape
a	4	#4	7'-0"	—
a ₁	8	#5	8'-2"	U
a ₂	5	#5	9'-0"	U
a ₃	5	#5	7'-0"	—
a ₄	8	#6	9'-3"	U
a ₅	4	#6	10'-1"	U
a ₆	2	#6	10'-10"	U
a ₇	8	#6	12'-2"	U
a ₈	6	#4	9'-6"	—
a ₉	8	#5	9'-6"	—
b	12	#5	33'-1"	—
b ₁	10	#5	31'-0"	—
d	45	#4	5'-4"	J
h	4	#6	9'-11"	U
h ₁	2	#6	7'-0"	—
h ₂	5	#4	21'-9"	—
h ₃	5	#4	11'-11"	—
h ₄	12	#5	10'-2"	—
h ₅	6	#5	7'-6"	—
h ₆	6	#5	3'-3"	—
h ₇	4	#6	13'-4"	U
h ₈	4	#6	11'-1"	—
h ₉	22	#5	17'-5"	—
h ₁₀	6	#5	12'-0"	—
h ₁₁	6	#5	5'-11"	—
h ₁₂	5	#4	9'-0"	—
h ₁₃	5	#4	16'-5"	—
s	8	#4	5'-1"	□
s ₁	12	#4	5'-9"	□
v	53	#5	10'-1"	J
v ₁	12	#5	7'-1"	—
v ₂	20	#5	7'-11"	—
v ₃	41	#6	10'-6"	J
x	8	#4	5'-6"	U
x ₁	8	#4	4'-3"	U
x ₂	18	#4	4'-3"	U
x ₃	6	#4	16'-7"	L
Reinforcement Bars		Pound	4,370	
Concrete Box Culverts		Cu. Yd.	43.6	

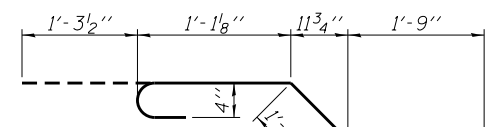


DRAIN DETAIL AT UPSTREAM END

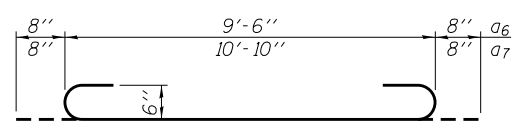
Notes:
 For Plan, Section Thru Barrel, and Section A-A, see sheet 2 of 3.
 For Bar d bending diagram, see sheet 1 of 3.
 For flowline elevations not shown, see roadway cross-sections.



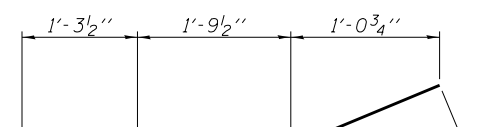
BARS a₄ & a₅



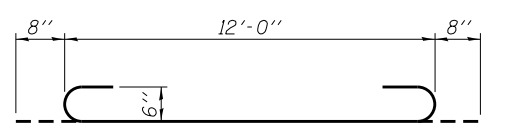
BAR x



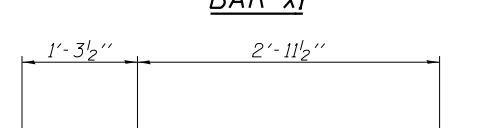
BARS a₆ & a₇



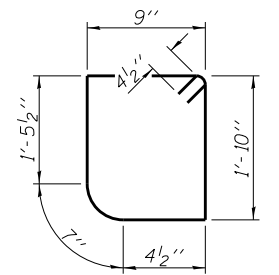
BAR x₁



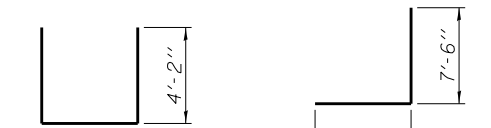
BAR h₇



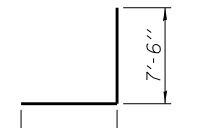
BAR x₂



BAR s₁



BAR x₃



BAR v₃

LAST SAVED = 1/23/2013
 PEN TABLE = W24x44.4
 PLOT DRIVER = pdfnclayers.pltcf9

FILE NAME =	USER NAME = elagemann	DESIGNED E.M. Lagemann	REVISED -
1:\1001100\Phase II - 76817\Cad\S\Plans	Headwalls-76817.dgn	DRAWN E.M. Lagemann	REVISED -
	PLOT SCALE = 0:2.0000 1' = 1"	CHECKED K.L. Hayes	REVISED -
	PLOT DATE = 1/23/2013 11:46:24 AM	DATE 1/10/13	REVISED -

**STATE OF ILLINOIS
 DEPARTMENT OF TRANSPORTATION**

**HORNER &
 SHIFRIN, INC.
 ENGINEERS**

**SLOPED TAPERED INLET DETAILS
 CULVERT AT STA. 2042+25.02**

F.A.P. RTE. 312	SECTION 68-WRS-1	COUNTY MONROE	TOTAL SHEETS 760	SHEET NO. 441
				CONTRACT NO. 76817
ILLINOIS FED. AID PROJECT				

SCALE: SHEET NO. 3 OF 3 SHEETS STA. 2041+57.71 TO STA. 2043+11.81