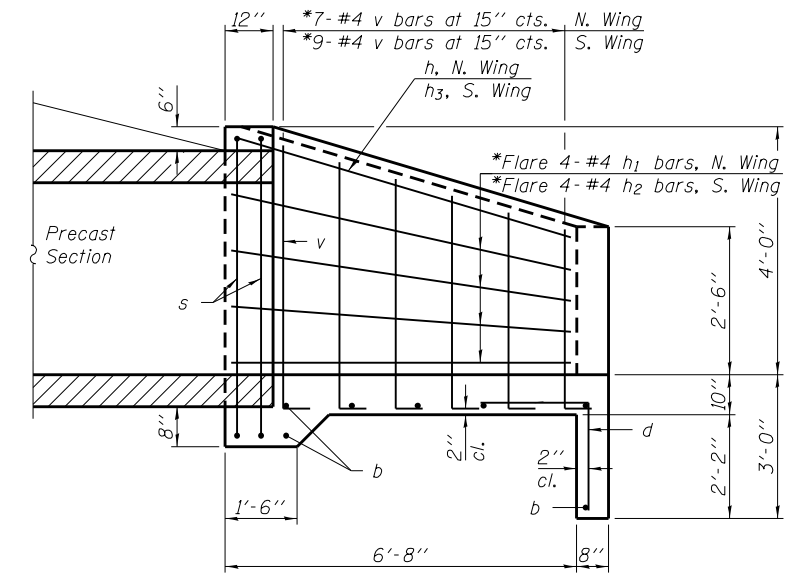
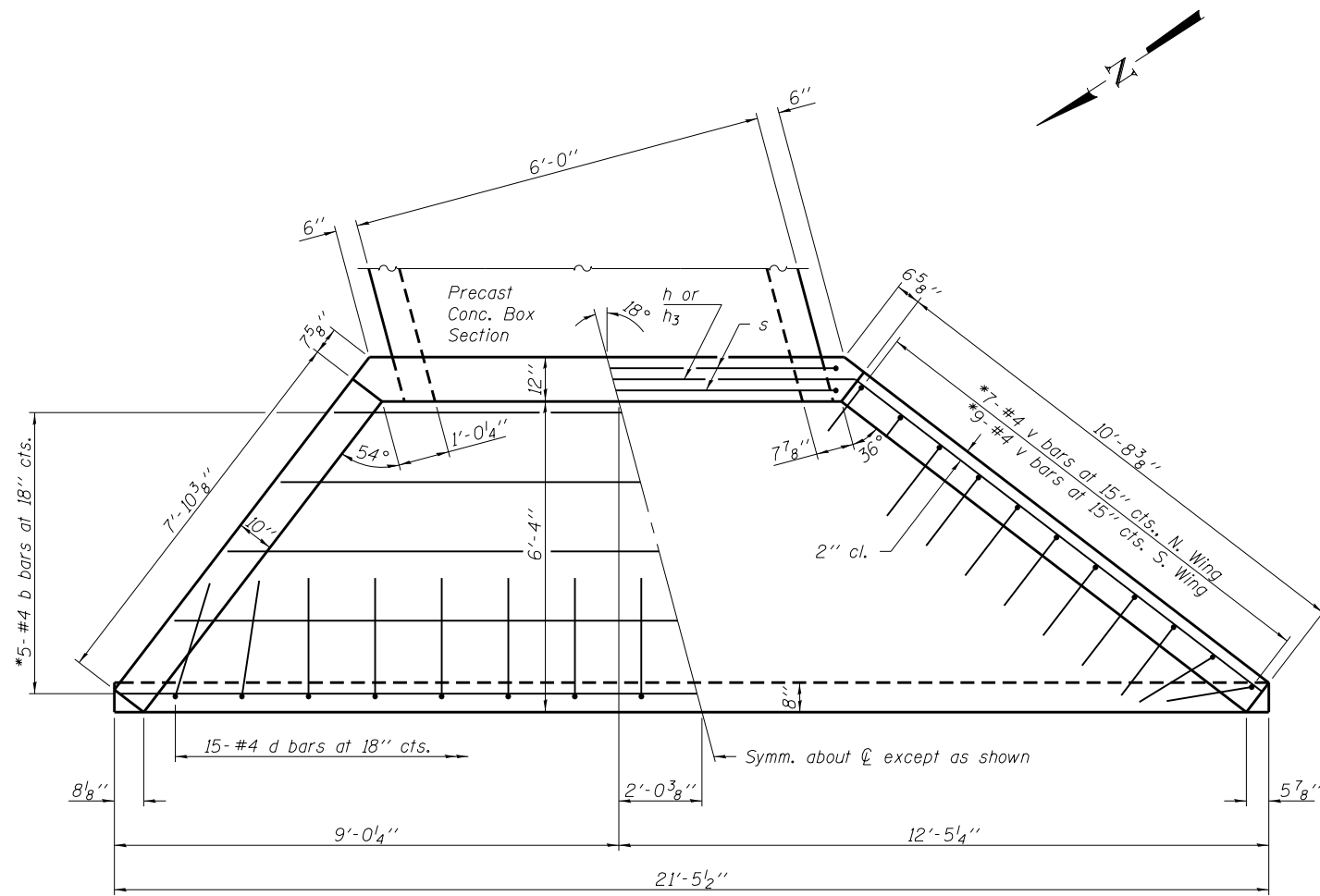


**END ELEVATION**

\* Cut or Bend to fit



**HALF SIDE ELEVATION**



**PLAN**

Note:  
For Upstream cast-in-place apron end, bar bending diagrams, and Bill of Material, see sheet 2 of 2.

LAST SAVED = 1/23/2013 11:46:29 AM  
PEN TABLE = V:\2013\111001100\Phase II - 76817\Cad\5-Plans\Headwalls-76817.dgn  
PLOT DRIVER = pdfplotlayers=pltdwg

FILE NAME =	USER NAME = elagemann	DESIGNED K.A. Klues	REVISED -
1:\1001100\Phase II - 76817\Cad\5-Plans\Headwalls-76817.dgn	Headwalls-76817.dgn	DRAWN K.A. Klues	REVISED -
	PLOT SCALE = 0:2.0000 '1' / in.	CHECKED E.M. Lagemann	REVISED -
	PLOT DATE = 1/23/2013 11:46:29 AM	DATE 01/09/2013	REVISED -

**STATE OF ILLINOIS  
DEPARTMENT OF TRANSPORTATION**

**HORNER &  
SHIRIN, INC.  
ENGINEERS**

**DOWNSTREAM APRON DETAILS**  
CULVERT AT STA. 2115+79.04

F.A.P. RTE.	SECTION	COUNTY	TOTAL SHEETS	SHEET NO.
312	68-WRS-1	MONROE	760	447
CONTRACT NO. 76817			ILLINOIS FED. AID PROJECT	

SCALE: SHEET NO. 1 OF 2 SHEETS STA. 2115+42.18 TO STA. 2116+19.32