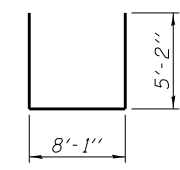
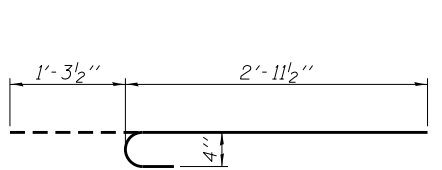
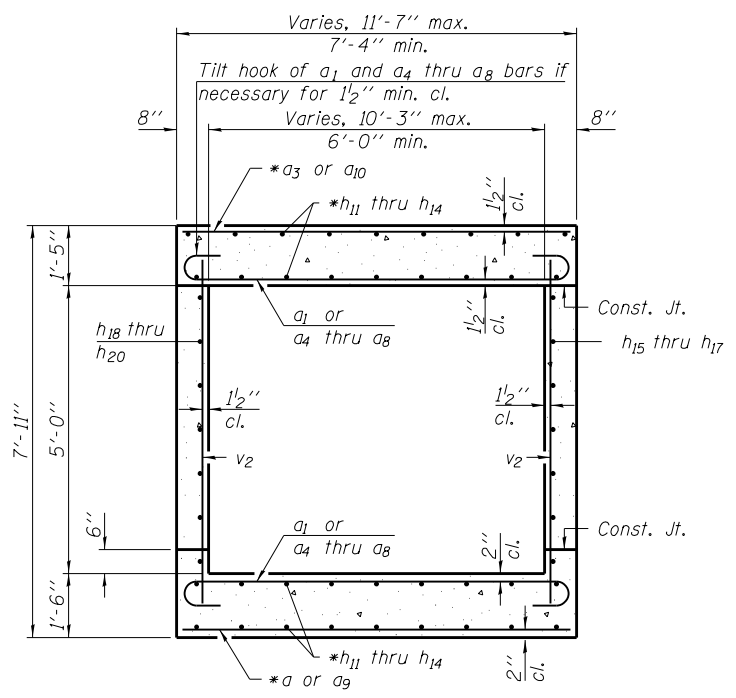
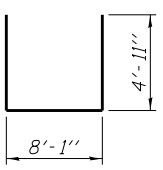
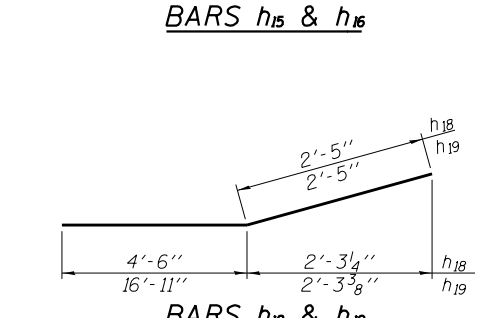
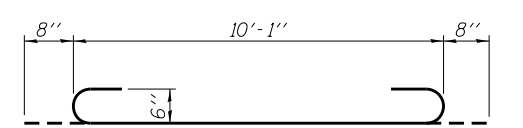
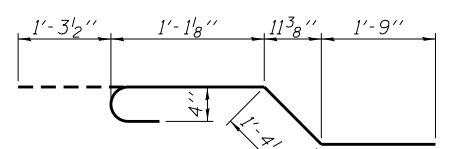
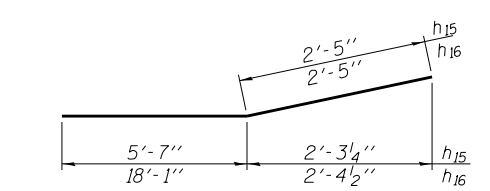
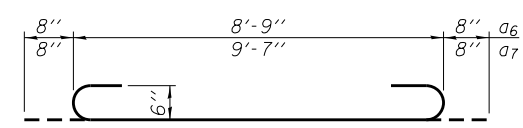
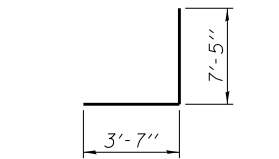
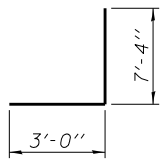
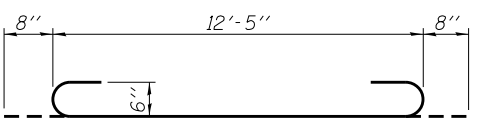
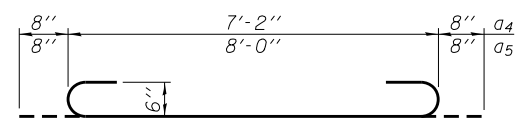
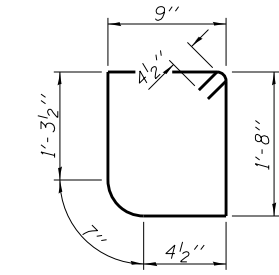
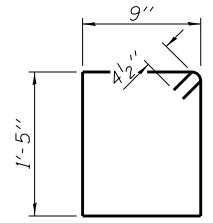
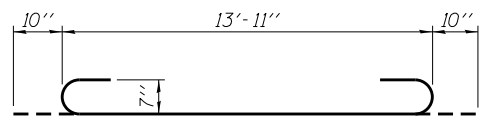
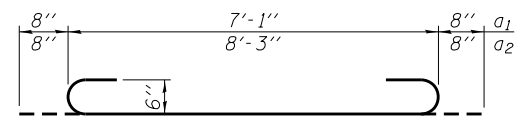


- \* Cut or bend bars to fit.
- \*\* Elev. 633.53, N. Corner  
Elev. 633.49, S. Corner
- \*\*\* 6-#5 h15 bars at 12\"/>
- \*\*\*\* 6-#5 h16 bars at 12\"/>
- 6-#5 h19 bars at 12\"/>
- \*\*\*\*\* 6-#5 h17 bars at 12\"/>
- 6-#5 h20 bars at 12\"/>

**BILL OF MATERIAL**

Bar	No.	Size	Length	Shape
a	31	#4	7'-0"	—
a1	128	#6	8'-5"	U
a2	12	#6	9'-7"	U
a3	41	#5	7'-1"	—
a4	4	#6	8'-6"	U
a5	4	#6	9'-4"	U
a6	4	#6	10'-1"	U
a7	4	#6	10'-11"	U
a8	7	#6	11'-5"	U
a9	6	#4	9'-3"	—
a10	8	#5	9'-7"	—
b	12	#5	50'-8"	—
b1	13	#6	32'-2"	—
d	57	#4	5'-4"	J
h	4	#7	15'-7"	U
h1	2	#6	13'-9"	—
h2	5	#4	9'-10"	—
h3	5	#4	36'-0"	—
h4	28	#5	35'-7"	—
h5	6	#5	25'-9"	—
h6	6	#5	35'-10"	—
h7	4	#6	13'-9"	U
h8	4	#6	11'-8"	—
h9	6	#4	16'-5"	—
h10	6	#4	10'-7"	—
h11	28	#5	5'-7"	—
h12	28	#5	28'-7"	—
h13	4	#5	4'-7"	—
h14	4	#5	2'-6"	—
h15	6	#5	8'-0"	—
h16	6	#5	20'-6"	—
h17	6	#5	12'-0"	—
h18	6	#5	6'-11"	—
h19	6	#5	19'-4"	—
h20	6	#5	6'-3"	—
s	14	#4	5'-1"	□
s1	12	#4	5'-5"	□
v	84	#4	7'-1"	—
v1	48	#5	10'-4"	J
v2	86	#4	7'-7"	—
v3	35	#6	11'-0"	J
x	28	#4	5'-6"	—
x1	6	#4	17'-11"	—
x2	32	#4	4'-3"	—
x3	6	#4	18'-5"	—
Reinforcement Bars			Pound	10,020
Concrete Box Culverts			Cu. Yd.	104.2

**LONGITUDINAL SECTION**



Notes:  
 For Plan, see sheet 3 of 4.  
 For Downstream Apron, see sheets 1 & 2 of 4.  
 For flowline elevations not shown, see roadway cross-sections.

LAST SAVED = 1/23/2013 11:46:33 AM  
 PEN TABLE = V2, V4, V41  
 PLOT DRIVER = pdfplotlayers.pltcf9

FILE NAME = 1:\1001100\Phase II - 76817\Cad\S\Plans\Headwalls-76817.dgn	USER NAME = elagemann	DESIGNED K.A. Klues	REVISED -
PLOT SCALE = 0:2.0000 '1' / in.	CHECKED E.M. Lagemann	DRAWN K.A. Klues	REVISED -
PLOT DATE = 1/23/2013 11:46:33 AM	DATE 01/17/2013	CHECKED E.M. Lagemann	REVISED -

**STATE OF ILLINOIS  
DEPARTMENT OF TRANSPORTATION**

**HORNER & SHIFRIN, INC.  
ENGINEERS**

**SLOPED TAPERED INLET DETAILS  
CULVERT AT STA. 2130+98.50**

SCALE: SHEET NO. 4 OF 4 SHEETS STA. 2129+64.94 TO STA. 2130+84.96

F.A.P. RTE. 312	SECTION 68-WRS-1	COUNTY MONROE	TOTAL SHEETS 760	SHEET NO. 452
CONTRACT NO. 76817				ILLINOIS FED. AID PROJECT