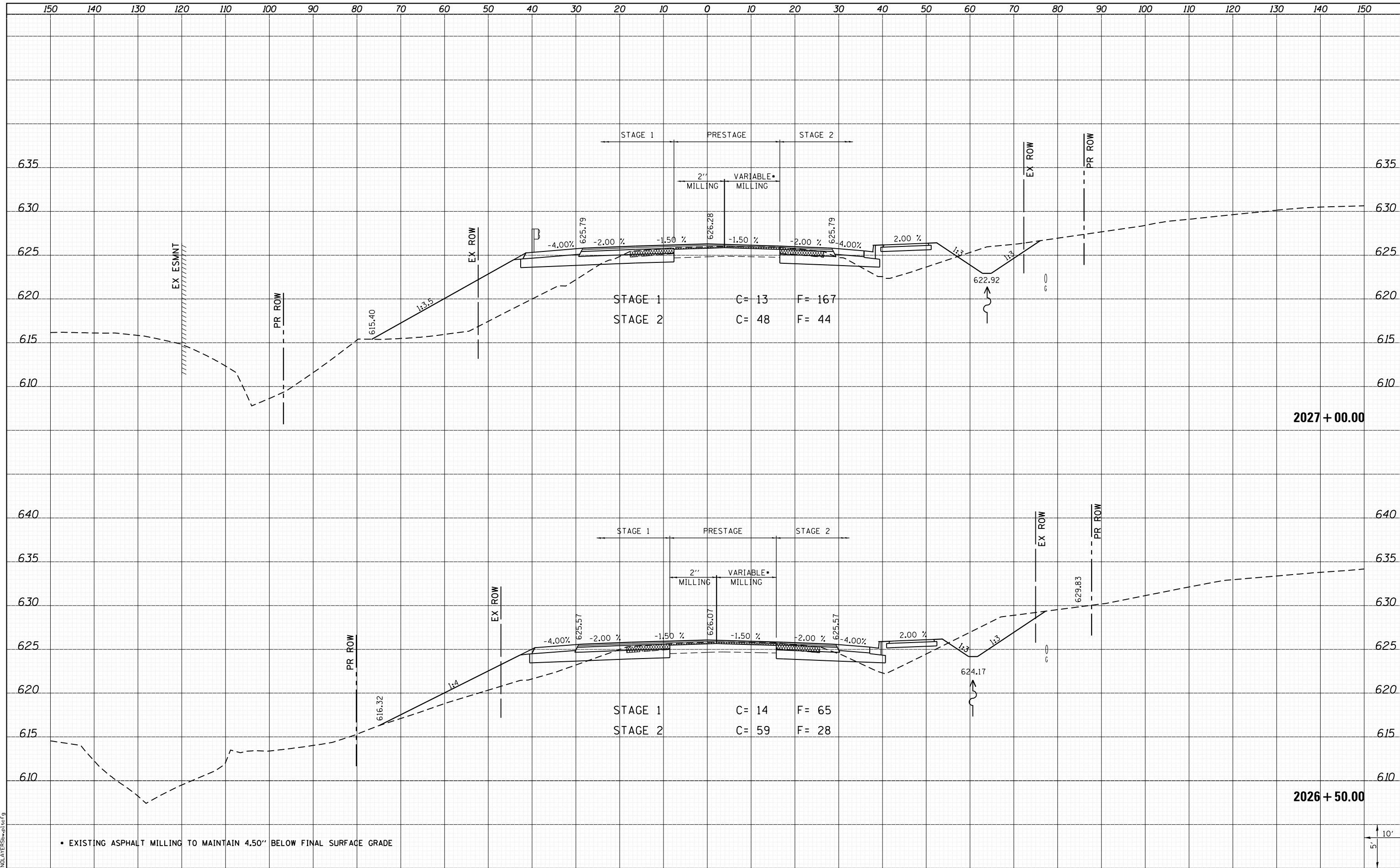


DATE	
BY	
FINAL SURVEY	SURVEYED
NOTE BOOK	PLOTTED
NO.	TEMPLATE
	AREAS CHECKED
	AREAS CHECKED

DATE	
BY	
ORIGINAL SURVEY	SURVEYED
NOTE BOOK	PLOTTED
NO.	TEMPLATE
	AREAS CHECKED
	AREAS CHECKED



LAST SAVED = 1/25/2013  
 PEN TABLE = V:\H&S\11001\Phase II - 76817\Cad\T\Plans\300.08  
 PLOT DRIVER = PdfPlotterServer.bat

FILE NAME =	I:\10011001\Phase II - 76817\Cad\T\Plans\300.08
USER NAME =	kaklues
DESIGNED -	REVISIED -
DRAWN -	REVISIED -
CHECKED -	REVISIED -
DATE -	REVISIED -
PLOT SCALE =	20.0000" / in.
PLOT DATE =	1/25/2013 4:53:02 PM

STATE OF ILLINOIS  
 DEPARTMENT OF TRANSPORTATION



CROSS SECTIONS  
 IL ROUTE 3

SCALE: SHEET 44 OF 197 SHEETS STA. 2026+50.00 TO STA. 2027+00.00

F.A.P. RTE.	SECTION	COUNTY	TOTAL SHEETS	SHEET NO.
312	68-WRS-1	MONROE	760	530
			CONTRACT NO. 76817	
ILLINOIS FED. AID PROJECT				