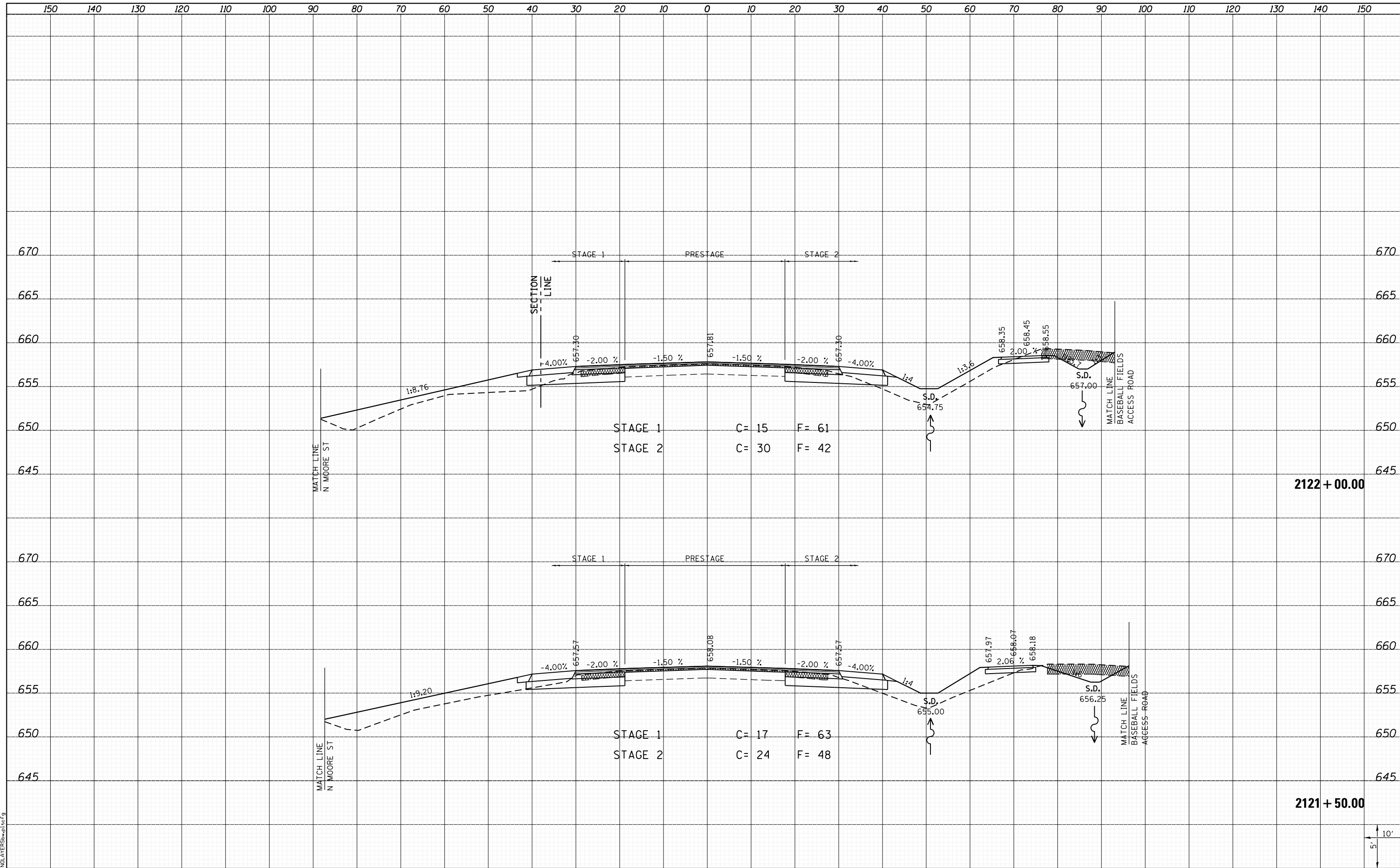


DATE	
BY	
SURVEYED	
PLOTTED	
TEMPLATE	
NOTE BOOK	
AREAS CHECKED	
NO.	

DATE	
BY	
SURVEYED	
PLOTTED	
TEMPLATE	
NOTE BOOK	
AREAS CHECKED	
NO.	



LAST SAVED = 1/25/2013  
 PEN TABLE = 161-hat.tbl  
 PLOT DRIVER = pdfplotter.exe

FILE NAME = I:\10011001\Phase II - 76817\Cad\T\Plans\300.08	USER NAME = kakluos	DESIGNED -	REVISIED -
	16817-sh1-IL3-xssht.dgn	DRAWN -	REVISIED -
	PLOT SCALE = 20.0000' / in.	CHECKED -	REVISIED -
	PLOT DATE = 1/25/2013 5:01:31 PM	DATE -	REVISIED -

**STATE OF ILLINOIS  
 DEPARTMENT OF TRANSPORTATION**



**CROSS SECTIONS  
 IL ROUTE 3**

SCALE: SHEET 144 OF 197 SHEETS STA. 2121+50.00 TO STA. 2122+00.00

F.A.P. RTE.	SECTION	COUNTY	TOTAL SHEETS	SHEET NO.
312	68-WRS-1	MONROE	760	630
			CONTRACT NO. 76817	
ILLINOIS FED. AID PROJECT				

