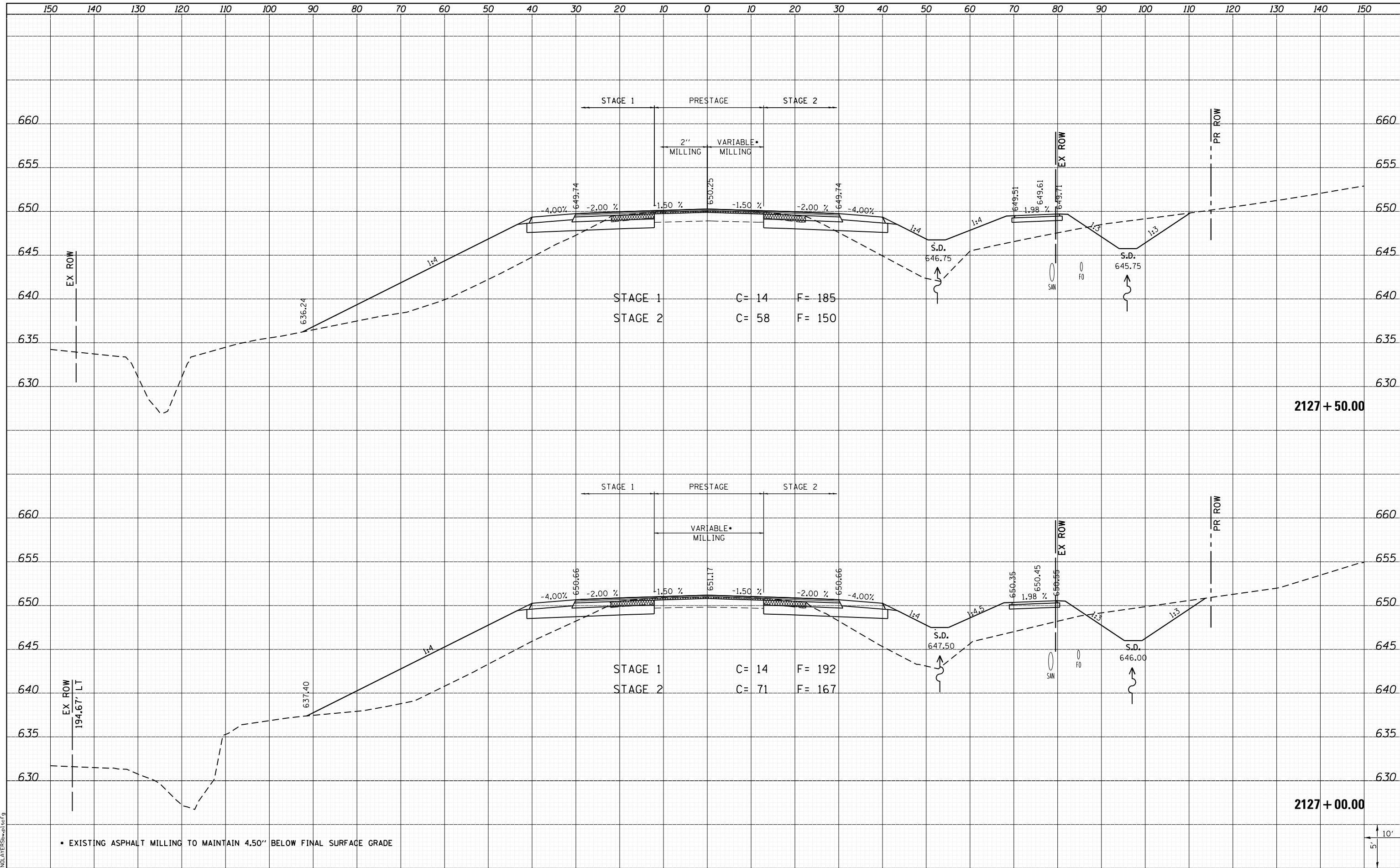


DATE	
BY	
FINAL SURVEY	
PLOTTED	
TEMPLATE	
NOTE BOOK	
AREAS CHECKED	

DATE	
BY	
ORIGINAL SURVEY	
PLOTTED	
TEMPLATE	
NOTE BOOK	
AREAS CHECKED	



LAST SAVED = 1/25/2013  
 PEN TABLE = VBI-HA17.rdi  
 PLOT DRIVER = PdfPlotterServer.bat

FILE NAME =	I:\1001100\Phase II - 76817\Cad\T\Plans\300.08
USER NAME =	kaklues
DESIGNED -	REVISD -
DRAWN -	REVISD -
PLLOT SCALE =	20.0000' / in.
CHECKED -	REVISD -
PLLOT DATE =	1/25/2013 5:02:00 PM
DATE -	REVISD -

**STATE OF ILLINOIS  
 DEPARTMENT OF TRANSPORTATION**



**CROSS SECTIONS  
 IL ROUTE 3**

SCALE: SHEET 150 OF 197 SHEETS STA. 2127+00.00 TO STA. 2127+50.00

F.A.P. RTE.	SECTION	COUNTY	TOTAL SHEETS	SHEET NO.
312	68-WRS-1	MONROE	760	636
				CONTRACT NO. 76817
ILLINOIS FED. AID PROJECT				