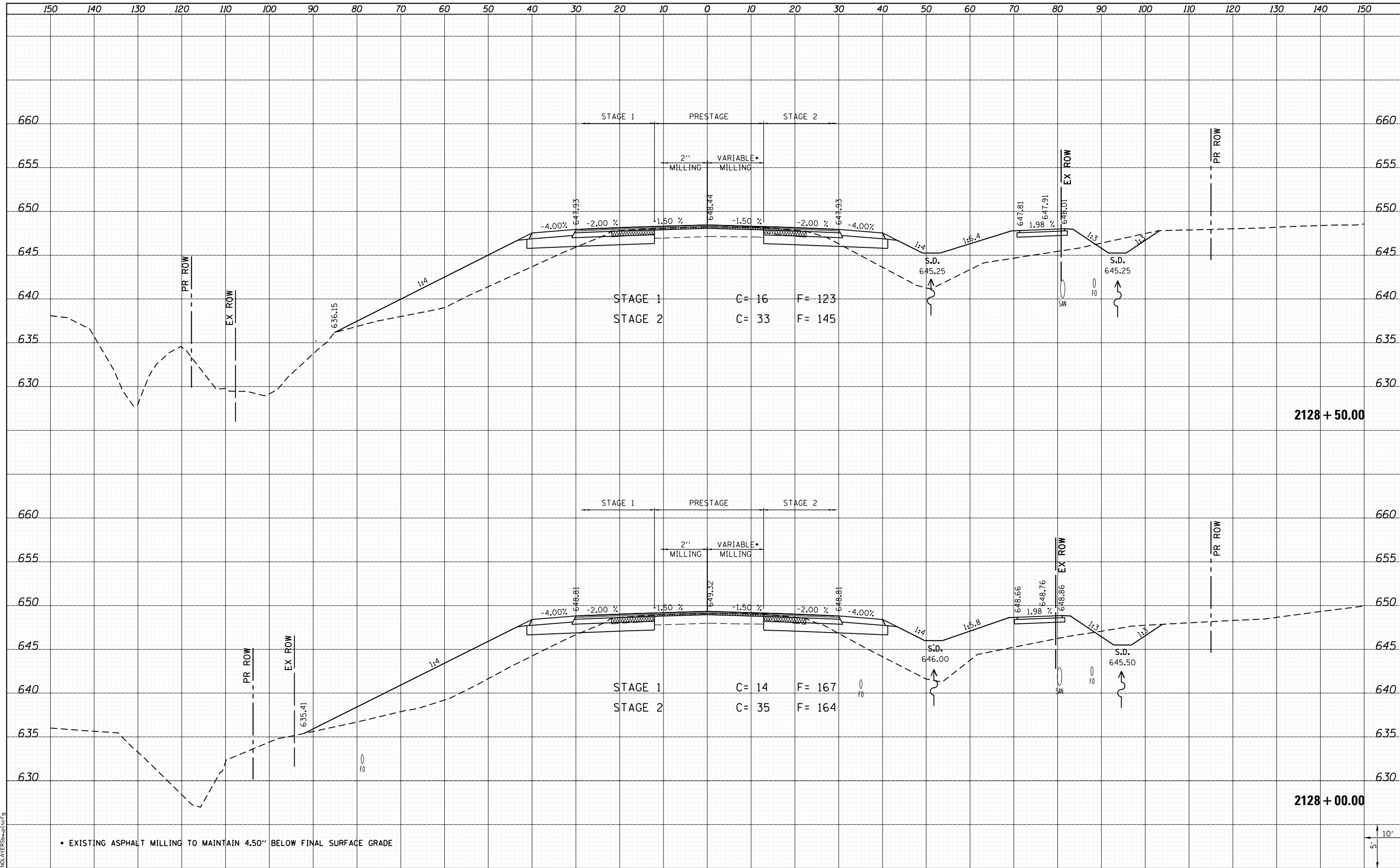


DATE	
BY	
SURVEYED	
PLOTTED	
TEMPLATE	
AREAS CHECKED	
FINAL SURVEY	
NOTE BOOK	
NO.	

DATE	
BY	
SURVEYED	
PLOTTED	
TEMPLATE	
AREAS CHECKED	
ORIGINAL SURVEY	
NOTE BOOK	
NO.	



LAST SAVED = 1/25/2013
PEN TABLE = VBI-Horner.dwg
PLOT DRIVER = PdfPlotterServer.exe

FILE NAME =	USER NAME = kakluos	DESIGNED -	REVISIED -
I:\10011001_Phase II - 76817\Cad\T\Plans\300.08	76817-sh1-IL3-xssht.dgn	DRAWN -	REVISIED -
		CHECKED -	REVISIED -
		DATE -	REVISIED -

**STATE OF ILLINOIS
DEPARTMENT OF TRANSPORTATION**



**CROSS SECTIONS
IL ROUTE 3**

SCALE: SHEET 151 OF 197 SHEETS STA. 2128+00.00 TO STA. 2128+50.00

F.A.P. RTE.	SECTION	COUNTY	TOTAL SHEETS	SHEET NO.
312	68-WRS-1	MONROE	760	637
				CONTRACT NO. 76817
ILLINOIS FED. AID PROJECT				