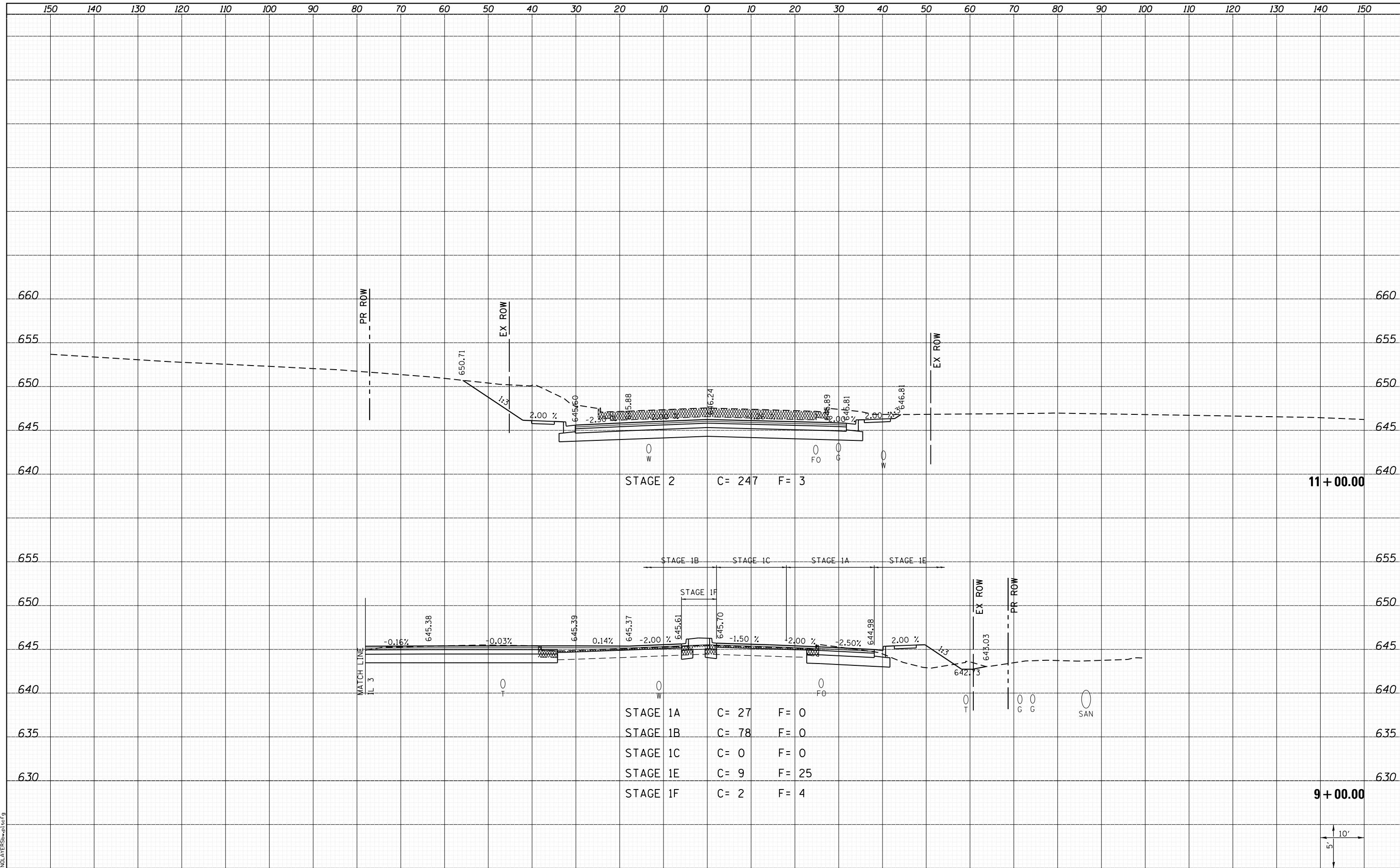


DATE	
BY	
SURVEYED	
PLOTTED	
TEMPLATE	
AREAS	
CHECKED	
NO.	

DATE	
BY	
SURVEYED	
PLOTTED	
TEMPLATE	
AREAS	
CHECKED	
NO.	



STAGE 2 C= 247 F= 3

11 + 00.00

STAGE 1A	C= 27	F= 0
STAGE 1B	C= 78	F= 0
STAGE 1C	C= 0	F= 0
STAGE 1E	C= 9	F= 25
STAGE 1F	C= 2	F= 4

9 + 00.00

LAST SAVED = 1/24/2013 10:51:01 AM
 PEN TABLE = 161-H&I-F&I
 PLOT DRIVER = PLOTDRIVER\$HPLOT\$G

FILE NAME =	USER NAME = kakluos	DESIGNED -	REVISIED -
I:\10011001_Phase II - 76817\Cad\T\Plans\304.08	6817-sh1-IL156-xssht.dgn	DRAWN -	REVISIED -
	PLOT SCALE = 20.0000' / in.	CHECKED -	REVISIED -
	PLOT DATE = 1/25/2013 5:06:12 PM	DATE -	REVISIED -

STATE OF ILLINOIS
DEPARTMENT OF TRANSPORTATION



CROSS SECTIONS
IL 156

SCALE: SHEET 9 OF 12 SHEETS STA. 9+00.00 TO STA. 11+00.00

F.A.P. RTE.	SECTION	COUNTY	TOTAL SHEETS	SHEET NO.
312	68-WRS-1	MONROE	760	699
				CONTRACT NO. 76817
ILLINOIS FED. AID PROJECT				