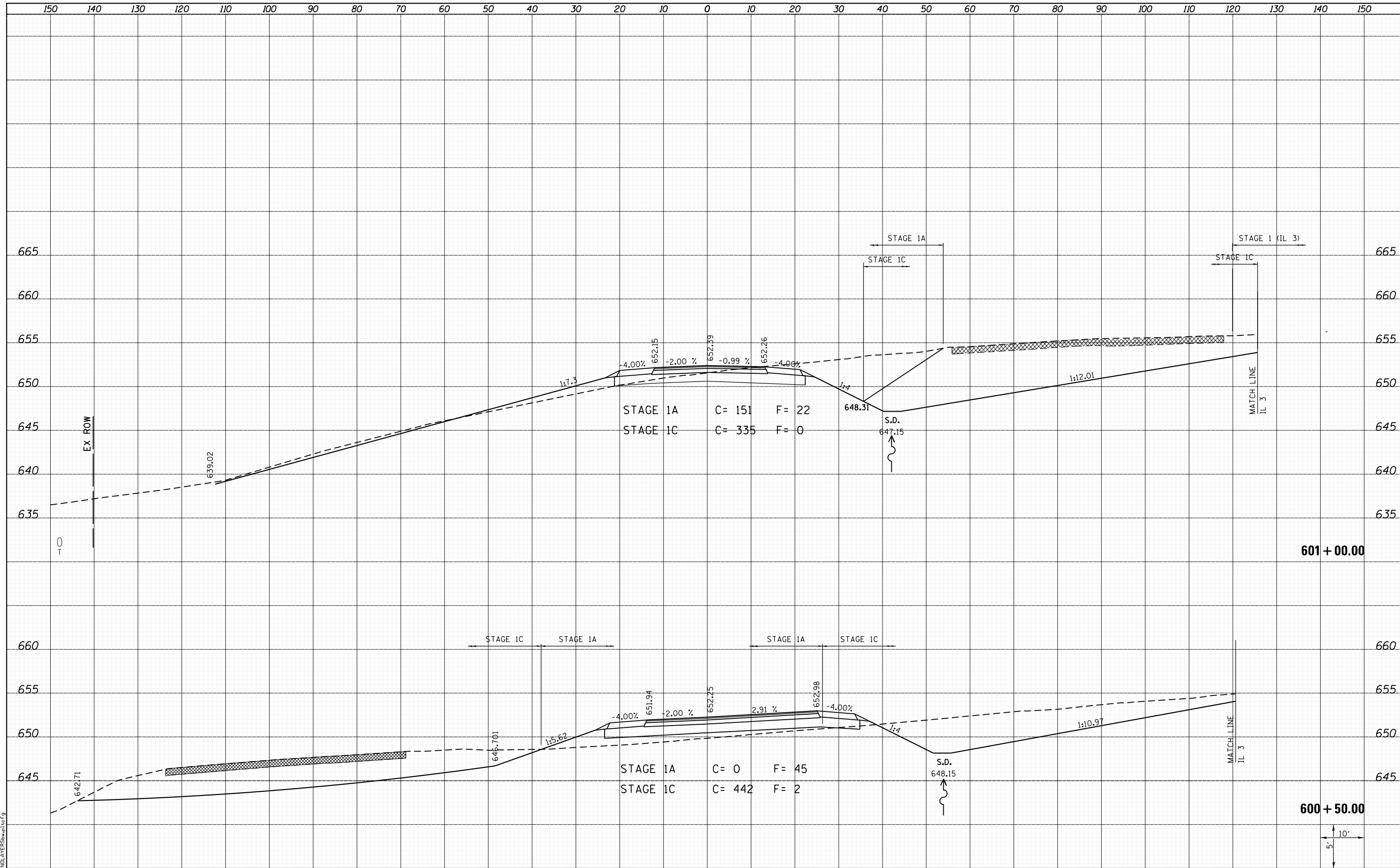


DATE	
BY	
SURVEYED	
PLOTTED	
TEMPLATE	
AREAS	
CHECKED	
NO.	

DATE	
BY	
SURVEYED	
PLOTTED	
TEMPLATE	
AREAS	
CHECKED	
NO.	



LAST SAVED = 1/24/2013
PEN TABLE = VBI-H&I-F&E
PLOT DRIVER = B:\PLOTTERS\pwtcf9

FILE NAME =	USER NAME = kakluos	DESIGNED -	REVISIED -
I:\10011001_Phase II - 76817\Cad\T\Plans\309.08	76817-shit-Moore-xssh.dgn	DRAWN -	REVISIED -
	PLOT SCALE = 20.0000' / in.	CHECKED -	REVISIED -
	PLOT DATE = 1/25/2013 5:06:38 PM	DATE -	REVISIED -

STATE OF ILLINOIS
DEPARTMENT OF TRANSPORTATION



CROSS SECTIONS
NORTH MOORE ST.

SCALE: SHEET 1 OF 9 SHEETS STA. 600+50.00 TO STA. 601+00.00

F.A.P. RTE.	SECTION	COUNTY	TOTAL SHEETS	SHEET NO.
312	68-WRS-1	MONROE	760	730
			CONTRACT NO. 76817	
ILLINOIS FED. AID PROJECT				