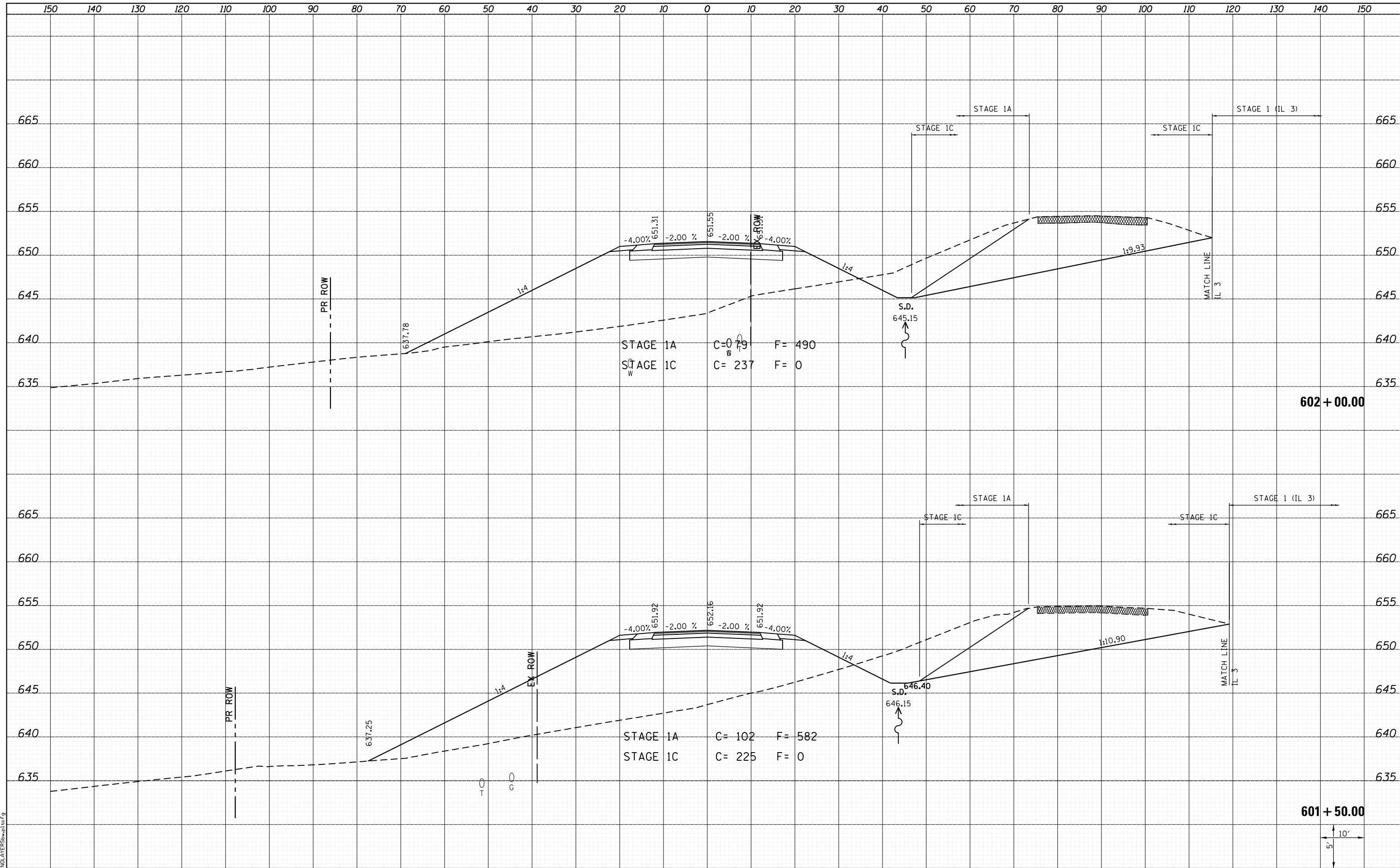


DATE	
BY	
SURVEYED	
PLOTTED	
TEMPLATE	
AREAS	
CHECKED	
NO.	

DATE	
BY	
SURVEYED	
PLOTTED	
TEMPLATE	
AREAS	
CHECKED	
NO.	



LAST SAVED = 1/24/2013  
 PEN TABLE = VBI-H&I-F&I  
 PLOT DRIVER = B:\PLOTTERS\pwtcf9

FILE NAME = I:\1001100\Phase II - 76817\Cad\T\Plans\309.08	USER NAME = kaklues	DESIGNED -	REVISIED -
I:\1001100\Phase II - 76817\Cad\T\Plans\309.08	76817-shit-Moore-xssh.dgn	DRAWN -	REVISIED -
	PLOT SCALE = 20.0000' / in.	CHECKED -	REVISIED -
	PLOT DATE = 1/25/2013 5:06:38 PM	DATE -	REVISIED -

**STATE OF ILLINOIS  
 DEPARTMENT OF TRANSPORTATION**



**CROSS SECTIONS  
 NORTH MOORE ST.**

SCALE: SHEET 2 OF 9 SHEETS STA. 601+50.00 TO STA. 602+00.00

F.A.P. RTE.	SECTION	COUNTY	TOTAL SHEETS	SHEET NO.
312	68-WRS-1	MONROE	760	731
CONTRACT NO. 76817			ILLINOIS FED. AID PROJECT	

