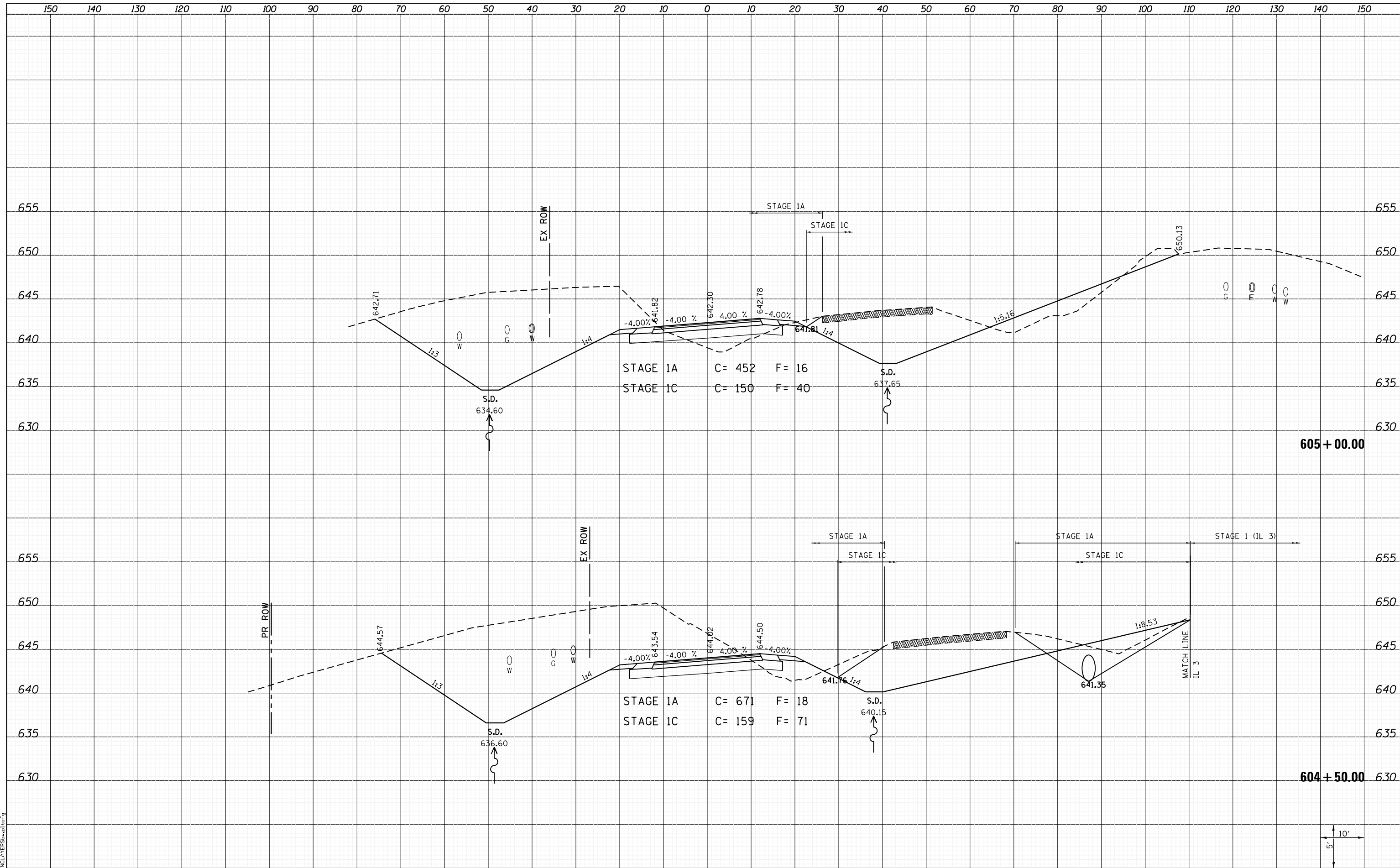


DATE	
BY	
SURVEYED	
PLOTTED	
TEMPLATE	
AREAS	
AREAS CHECKED	
NO.	

DATE	
BY	
SURVEYED	
PLOTTED	
TEMPLATE	
AREAS	
AREAS CHECKED	
NO.	



LAST SAVED = 1/24/2013
 PEN TABLE = VBI-H&I-F&E
 PLOT DRIVER = PLOTDRIVER\$HWPLT\$CF9

FILE NAME = I:\10011001_Phase II - 76817\Cad\T\Plans\309.08	USER NAME = kakluos	DESIGNED -	REVISD -
I:\10011001_Phase II - 76817\Cad\T\Plans\309.08	6817-shit-Moore-xssh.dgn	DRAWN -	REVISD -
	PLOT SCALE = 20.0000' / in.	CHECKED -	REVISD -
	PLOT DATE = 1/25/2013 5:06:40 PM	DATE -	REVISD -

**STATE OF ILLINOIS
DEPARTMENT OF TRANSPORTATION**



**CROSS SECTIONS
NORTH MOORE ST.**

SCALE: SHEET 5 OF 9 SHEETS STA. 604+50.00 TO STA. 605+00.00

F.A.P. RTE. 312	SECTION 68-WRS-1	COUNTY MONROE	TOTAL SHEETS 760	SHEET NO. 734
CONTRACT NO. 76817				ILLINOIS FED. AID PROJECT

