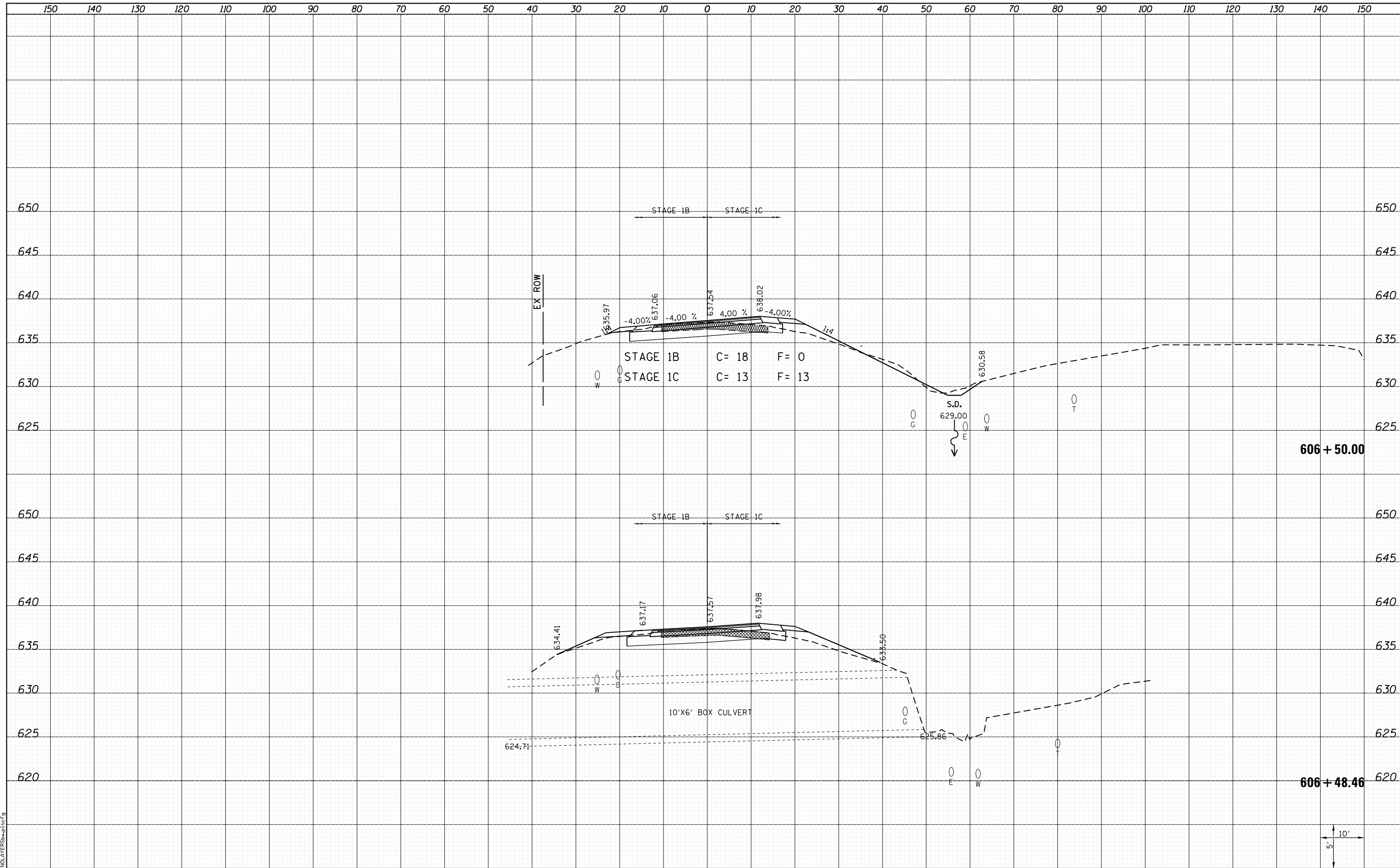


DATE	
BY	
SURVEYED	
PLOTTED	
TEMPLATE	
AREAS	
CHECKED	
NO.	

DATE	
BY	
SURVEYED	
PLOTTED	
TEMPLATE	
AREAS	
CHECKED	
NO.	



LAST SAVED = 1/24/2013
 PEN TABLE = VBI-H&I-F&E
 PLOT DRIVER = B:\PLOTTERS\pwtcf9

FILE NAME = I:\10011001_Phase II - 76817\Cad\T\Plns\309.08	USER NAME = kaklues	DESIGNED -	REVISIED -
	I:\10011001_Phase II - 76817\Cad\T\Plns\309.08	DRAWN -	REVISIED -
		CHECKED -	REVISIED -
		DATE -	REVISIED -

STATE OF ILLINOIS
 DEPARTMENT OF TRANSPORTATION



CROSS SECTIONS
 NORTH MOORE ST.
 SCALE: SHEET 7 OF 9 SHEETS STA. 606+48.46 TO STA. 606+50.00

F.A.P. RTE.	SECTION	COUNTY	TOTAL SHEETS	SHEET NO.
312	68-WRS-1	MONROE	760	736
				CONTRACT NO. 76817
ILLINOIS FED. AID PROJECT				

