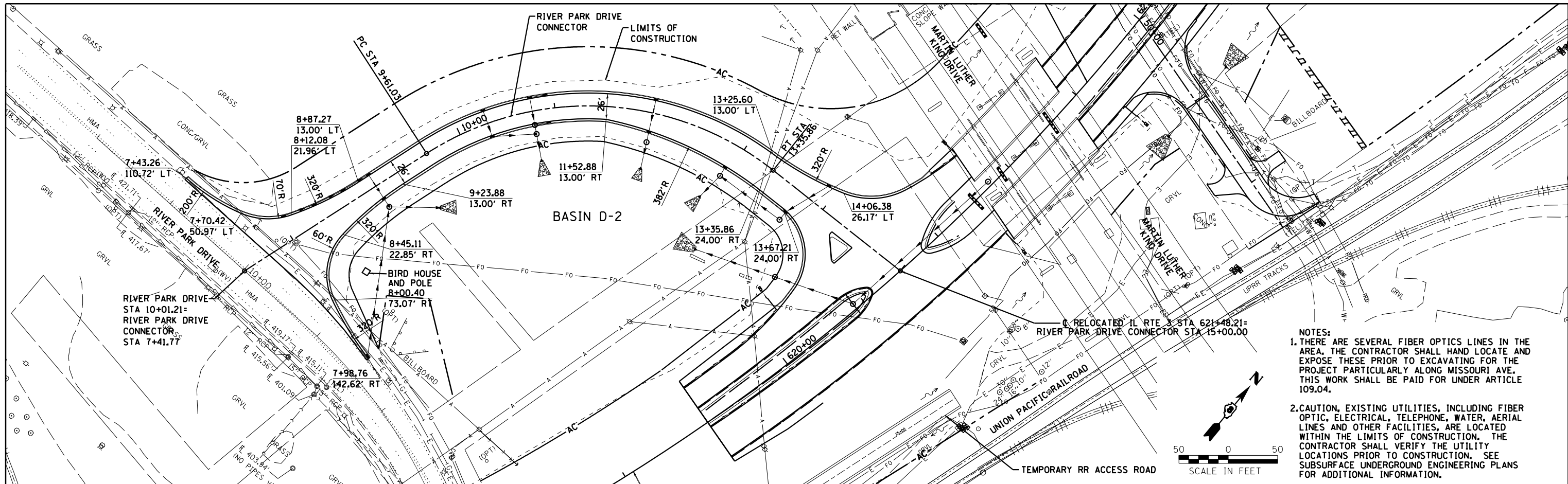


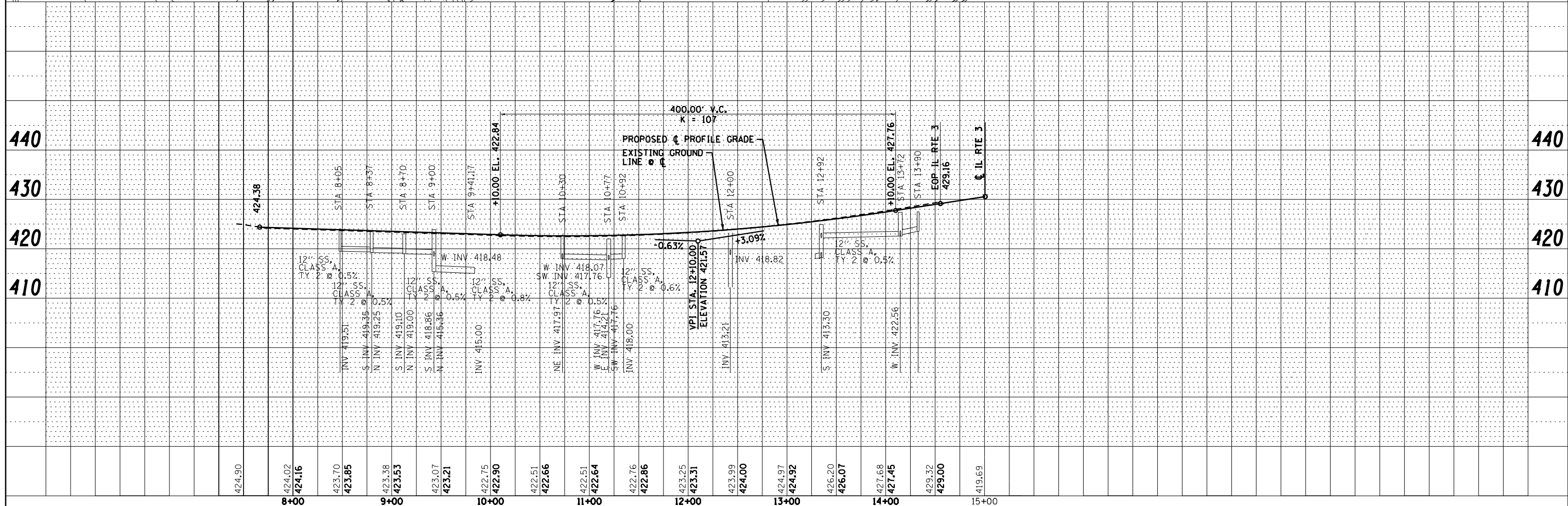
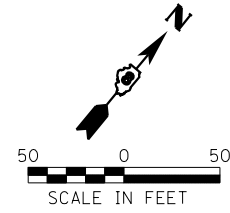
| | | | |
|------|-----------|----|------|
| PLAN | SURVEYED | BY | DATE |
| | PLOTTED | | |
| | ALIGNED | | |
| | CHECKED | | |
| | FILED | | |
| | NO. | | |
| | FILE NAME | | |

| | | | |
|---------|-----------|----|------|
| PROFILE | SURVEYED | BY | DATE |
| | PLOTTED | | |
| | GRADES | | |
| | CHECKED | | |
| | STRUCTURE | | |
| | NOTATIONS | | |
| | CHKD | | |
| | NO. | | |



NOTES:

1. THERE ARE SEVERAL FIBER OPTICS LINES IN THE AREA. THE CONTRACTOR SHALL HAND LOCATE AND EXPOSE THESE PRIOR TO EXCAVATING FOR THE PROJECT PARTICULARLY ALONG MISSOURI AVE. THIS WORK SHALL BE PAID FOR UNDER ARTICLE 109.04.
2. CAUTION, EXISTING UTILITIES, INCLUDING FIBER OPTIC, ELECTRICAL, TELEPHONE, WATER, AERIAL LINES AND OTHER FACILITIES, ARE LOCATED WITHIN THE LIMITS OF CONSTRUCTION. THE CONTRACTOR SHALL VERIFY THE UTILITY LOCATIONS PRIOR TO CONSTRUCTION. SEE SUBSURFACE UNDERGROUND ENGINEERING PLANS FOR ADDITIONAL INFORMATION.



Farnsworth GROUP, INC.
2705 McGraw Drive
Bloomington, Illinois 61704
309/663-8435, 309/663-1571 fax

| | | |
|-----------------------------|-----------------|-----------|
| USER NAME = dmeyer | DESIGNED - JJO | REVISED - |
| PLOT SCALE = 100.0000' / 1" | DRAWN - JJO | REVISED - |
| PLOT DATE = 3/21/2013 | CHECKED - PJM | REVISED - |
| | DATE - 03/20/13 | REVISED - |

**STATE OF ILLINOIS
DEPARTMENT OF TRANSPORTATION**

| RIVER PARK DRIVE CONNECTOR PLAN & PROFILE | | | |
|--|-----------|-----------|--------------|
| SCALE: | SHEET NO. | OF SHEETS | STA. TO STA. |

| | | | | |
|---------------------------|---------|-----------|--------------|--------------------|
| F.A.P. RTE. | SECTION | COUNTY | TOTAL SHEETS | SHEET NO. |
| 788 | 520-1-2 | ST. CLAIR | 142 | 30 |
| | | | | CONTRACT NO. 76850 |
| ILLINOIS FED. AID PROJECT | | | | |