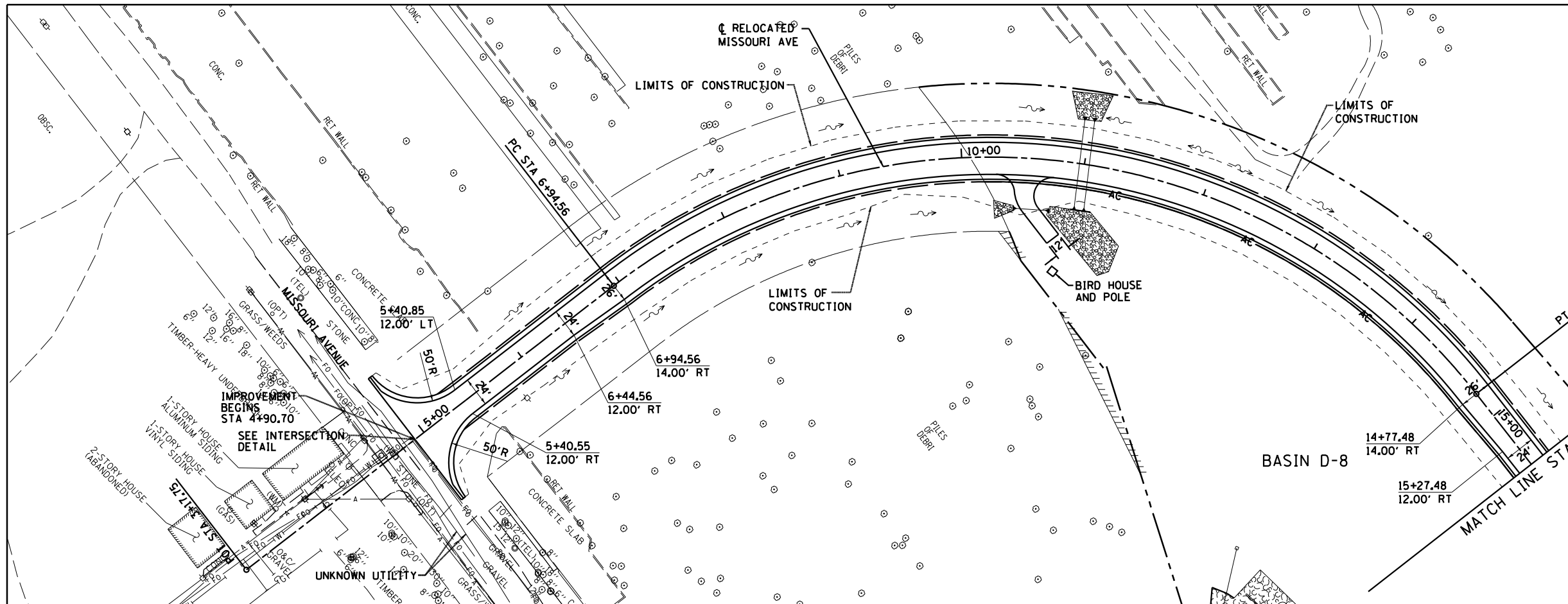


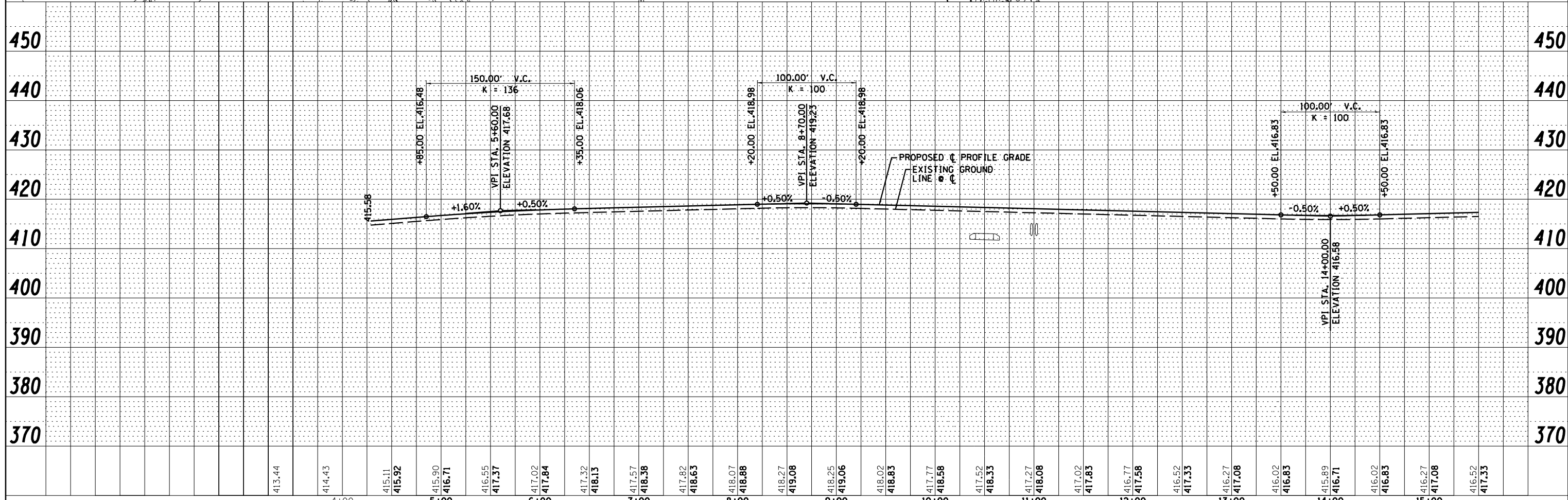
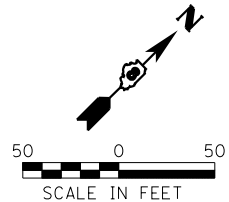
PLAN	SURVEYED	BY	DATE
	ALIGNED		
	PLOTTED		
	CHECKED		
	FILED		
	NO.		

PROFILE	SURVEYED	BY	DATE
	GRADES		
	CHECKED		
	NOTED		
	NO.		



MISSOURI AVENUE
CURVE DATA
PI STA =11+92.09
 $\Delta = 89^\circ 42' 56''$ (RT)
D =111' 27' 33"
R =500.00'
T =497.52'
L =782.92'
E =205.36'
e = 3.93%
T.R. = 36.54
S.E. RUN = 76.92
P.C. STA =6+94.56
P.T. STA =14+77.48

- NOTES:
1. THERE ARE SEVERAL FIBER OPTICS LINES IN THE AREA. THE CONTRACTOR SHALL HAND LOCATE AND EXPOSE THESE PRIOR TO EXCAVATING FOR THE PROJECT PARTICULARLY ALONG MISSOURI AVE. THIS WORK SHALL BE PAID FOR UNDER ARTICLE 109.04.
 2. CAUTION, EXISTING UTILITIES, INCLUDING FIBER OPTIC, ELECTRICAL, TELEPHONE, WATER, AERIAL LINES AND OTHER FACILITIES, ARE LOCATED WITHIN THE LIMITS OF CONSTRUCTION. THE CONTRACTOR SHALL VERIFY THE UTILITY LOCATIONS PRIOR TO CONSTRUCTION. SEE SUBSURFACE UNDERGROUND ENGINEERING PLANS FOR ADDITIONAL INFORMATION.



<p>Farnsworth GROUP, INC. 2709 McGraw Drive Bloomington, Illinois 61704 309/663-8435, 309/663-1571 fax</p>	USER NAME = dmeyer	DESIGNED - JJO	REVISED -	STATE OF ILLINOIS DEPARTMENT OF TRANSPORTATION	RELOCATED MISSOURI AVENUE PLAN & PROFILE			F.A.P. RT. = 788	SECTION = 520-1-2	COUNTY = ST. CLAIR	TOTAL SHEETS = 142	SHEET NO. = 31	
	PLOT SCALE = 100.000' / in.	CHECKED - PJM	REVISED -		SCALE: SHEET NO. OF SHEETS STA. TO STA.			CONTRACT NO. 76850					
	PLOT DATE = 3/21/2013	DATE = 03/20/13	REVISED -		ILLINOIS FED. AID PROJECT								