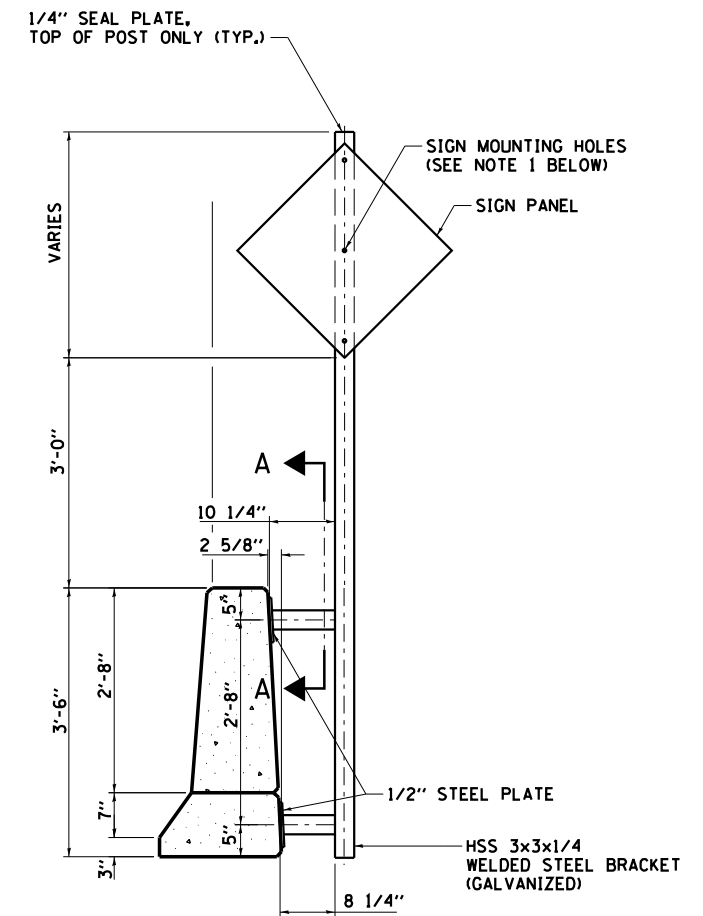
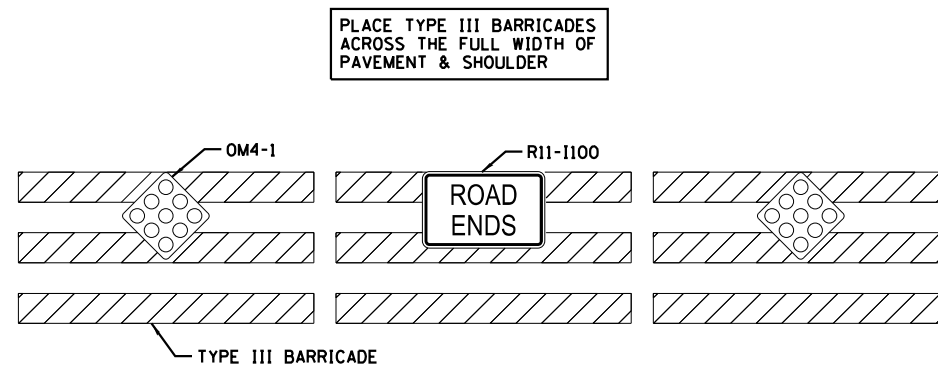


NOTE:
ALL COMPONENTS OF THE DRUM AND CHEVRON SIGN
DETAIL BECOME THE PROPERTY OF THE STATE

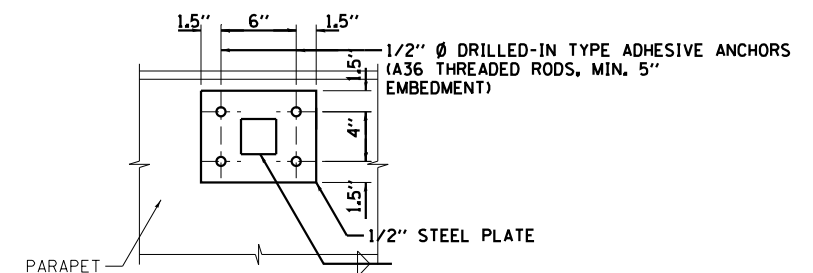
DRUM AND CHEVRON SIGN DETAIL



SIGN SUPPORT SPECIAL



ROAD CLOSURE DETAIL



SECTION A-A

USER NAME = *USER*	DESIGNED - JJO	REVISED -
	DRAWN - JJO	REVISED -
PLOT SCALE = *SCALE*	CHECKED - PJM	REVISED -
PLOT DATE = *DATE*	DATE - 03/20/13	REVISED -

F.A.P. RTE.	SECTION	COUNTY	TOTAL SHEETS	SHEET NO.
788	520-1-2	ST. CLAIR	142	70
CONTRACT NO. 76850				
ILLINOIS FED. AID PROJECT				