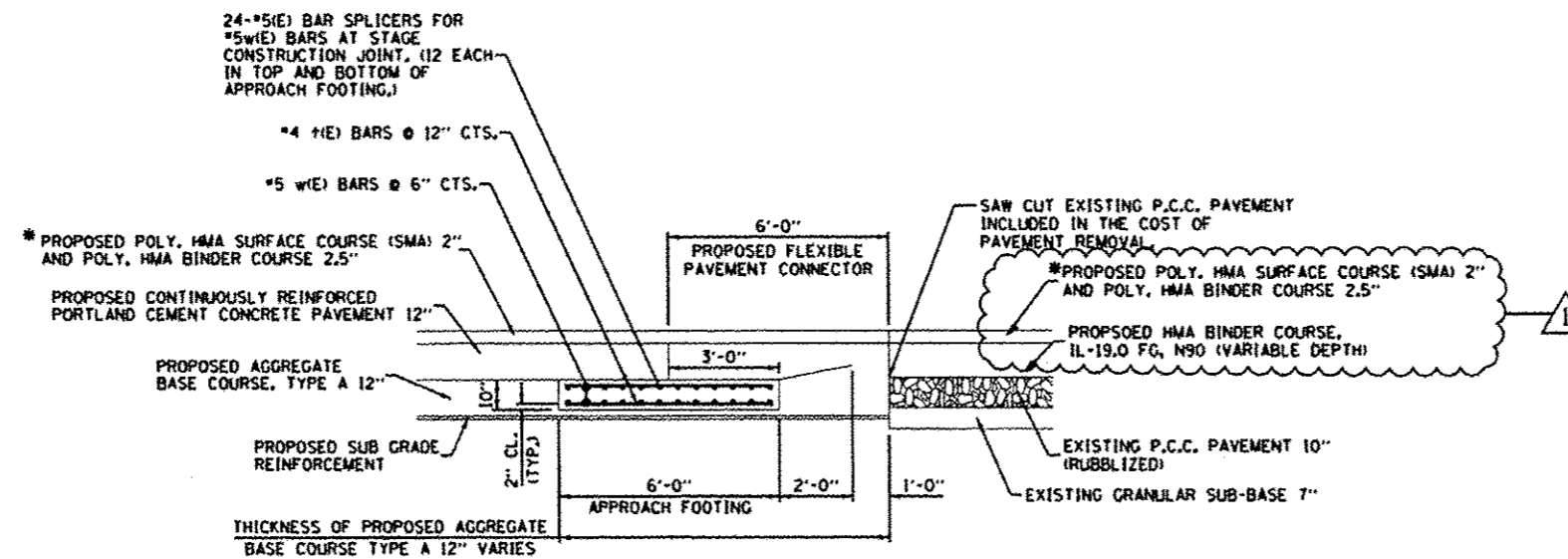


PAVEMENT CONNECTION DETAIL NOTES

EXCAVATION WILL BE PAID FOR AS EARTH EXCAVATION.
 EXISTING PAVEMENT TO BE REMOVED WILL BE PAID FOR AS PAVEMENT REMOVAL.
 APPROACH FOOTING CONCRETE WILL BE PAID FOR AS CONCRETE STRUCTURES.
 REINFORCEMENT WILL BE PAID FOR AS REINFORCEMENT BARS, EPOXY COATED.
 UPON THE ENGINEER'S APPROVAL OF THE CONSTRUCTION AND INSTALLATION METHOD, A PRECAST APPROACH FOOTING MAY BE USED IN LIEU OF THE CAST-IN-PLACE FOOTING. THE WIDTH OF THE PRECAST FOOTING SHALL BE NOT LESS THAN 6 FEET.

SEE BAR SPLICER DETAILS ON FOLLOWING SHEET.



* NOTE: THROUGHOUT THE PROJECT THE FINAL 2" POLY HMA SURFACE COURSE (SMA) SHALL BE CONSTRUCTED AFTER THE COMPLETION OF RUBBLIZATION, PLACEMENT OF HMA BINDER COURSES, POLY HMA BINDER COURSE, CONSTRUCTION OF THE CRPCC PAVEMENT AND FLEXIBLE CONNECTOR ON ALL SOUTHBOUND AND NORTHBOUND LANES.

CRPCC PAVEMENT/FLEXIBLE CONNECTOR DETAIL

(IL 4 INTERCHANGE AND CHURCH ROAD)

**BILL OF MATERIAL
(8 APPROACH FOOTINGS)**

Bar No.	Size	Length	Shape
#4	#4	5'-8"	---
#5	#5	11'-8"	---
Concrete Structures			Cu. Yd. 36
Reinforcement Bars, Epoxy Coated			Pound 6130
Bar Splicers			Each 192

FILE NAME: #FILE#	USER NAME: #USER#	DESIGNED: _____	REVISION: #1 6-6-13	STATE OF ILLINOIS DEPARTMENT OF TRANSPORTATION	CRPCC PAVEMENT/FLEXIBLE CONNECTOR DETAIL	F.A.I. RT# 59	SECTION 60:11-RBS-1	COUNTY MAISON	TOTAL SHEETS 212	SHEET NO. 113
CONTRACT NO. 16099	SCALE: _____	SHEET NO. 1 OF 2 SHEETS	STA. _____ TO STA. _____	ILLINOIS FED. AID PROJECT						

