

F.A.I. RTE.	SECTION	COUNTY	TOTAL SHEETS	SHEET NO.
55	60-(1,2)RS-3	MADISON	212	1
		ILLINOIS	CONTRACT NO. 76D99	

STATE OF ILLINOIS  
DEPARTMENT OF TRANSPORTATION  
DIVISION OF HIGHWAYS  
**PROPOSED  
HIGHWAY PLANS**

FOR INDEX OF SHEETS, SEE SHEET NO. 2



*James Paul Biggers*  
JAMES PAUL BIGGERS, P.E.

DATE 2/22/2012  
LICENSE EXPIRES 11/30/13

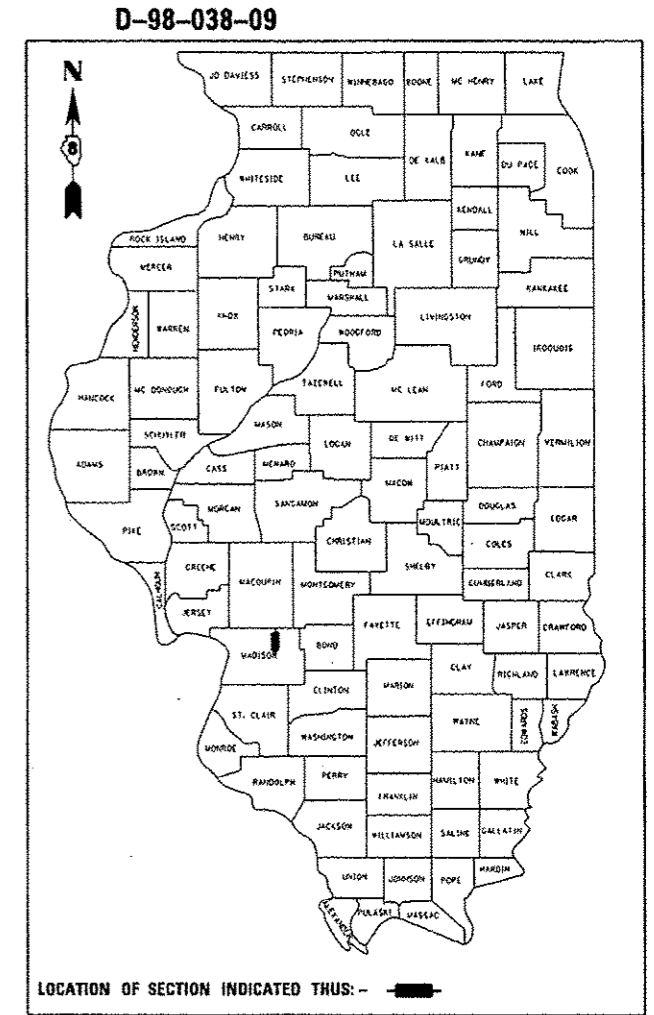
PLANS PREPARED BY:



**JOHNSON, DEPP & QUISENBERRY**  
CONSULTING ENGINEERS  
6450 South Sixth Street Road, Suite B Springfield, Illinois 62712  
Phone: (217) 529-4534 Fax: (217) 529-8278

FAI ROUTE 55 (I-55)  
SECTION 60-(1,2)RS-3  
PROJECT NHPP-0055(008)  
RUBBLIZING AND RESURFACING  
MADISON COUNTY

C-98-082-10



RURAL PRINCIPAL ARTERIAL (INTERSTATE)  
F.A.I. 55 (I-55)  
ADT (2009) = 28,100  
PV = 74.6% SU = 3.0% MU = 22.4%  
DESIGN SPEED = 70 MPH

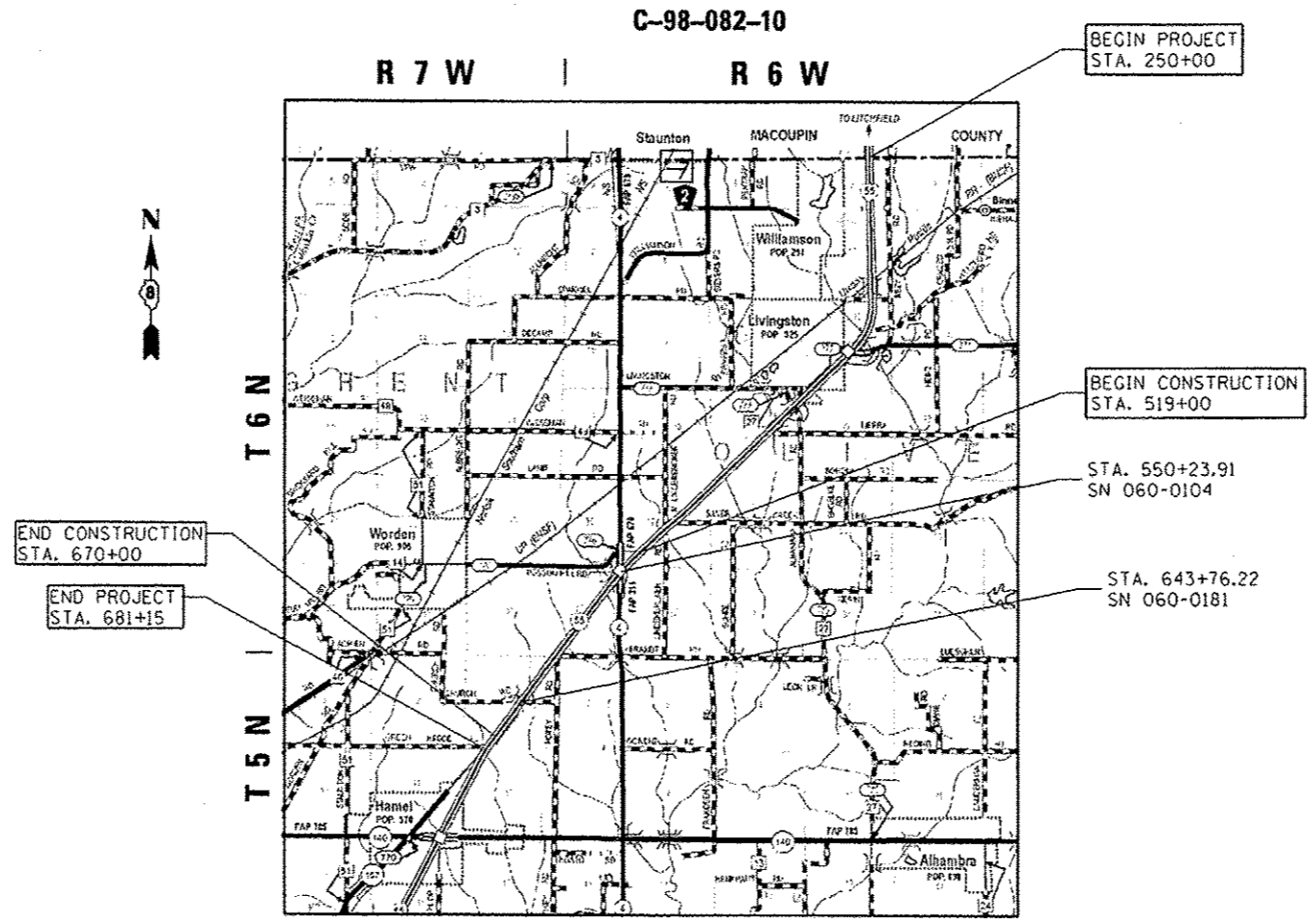
STATE OF ILLINOIS  
DEPARTMENT OF TRANSPORTATION  
DIVISION OF HIGHWAYS

SUBMITTED December 13, 2012

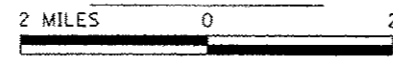
*John D. Baranzelli*  
DEPUTY DIRECTOR OF HIGHWAYS, REGION ENGINEER

March 22, 2013  
*John D. Baranzelli* P.E.  
ENGINEER OF DESIGN AND ENVIRONMENT

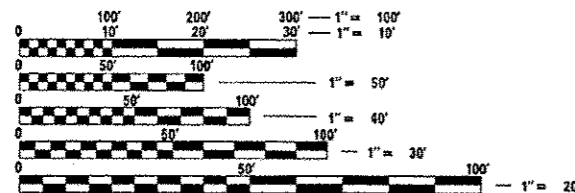
March 22, 2013  
*Omer Osman* P.E.  
DIRECTOR OF HIGHWAYS, CHIEF ENGINEER



LOCATION MAP



GROSS LENGTH = 43,115 FT. = 8.166 MILE  
NET LENGTH = 43,115 FT. = 8.166 MILE



FULL SIZE PLANS HAVE BEEN PREPARED USING STANDARD ENGINEERING SCALES. REDUCED SIZED PLANS WILL NOT CONFORM TO STANDARD SCALES. IN MAKING MEASUREMENTS ON REDUCED PLANS, THE ABOVE SCALES MAY BE USED.

J.U.L.I.E.  
JOINT UTILITY LOCATION INFORMATION FOR EXCAVATION  
1-800-892-0123  
OR 811

PROJECT ENGINEER: TIMOTHY PADGETT (618)346-3325  
PROJECT MANAGER: AARON KARLAS (618) 346-3208

CONTRACT NO. 76D99

**PRINTED BY THE AUTHORITY  
OF THE STATE OF ILLINOIS**