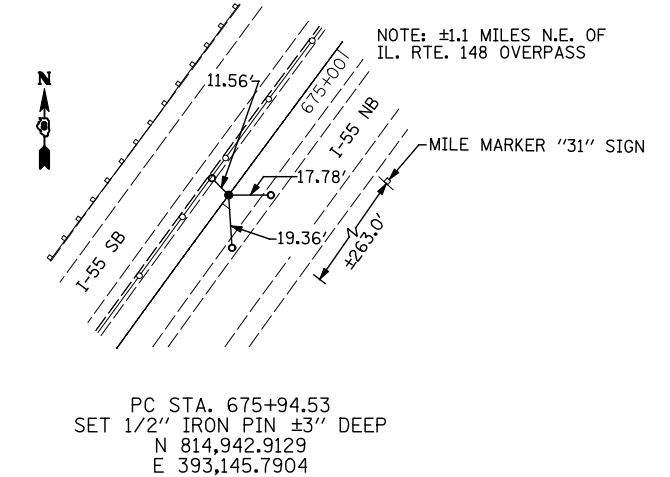
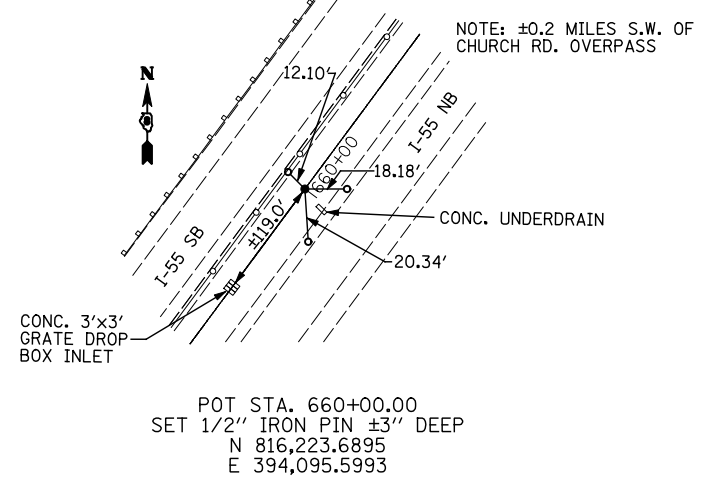
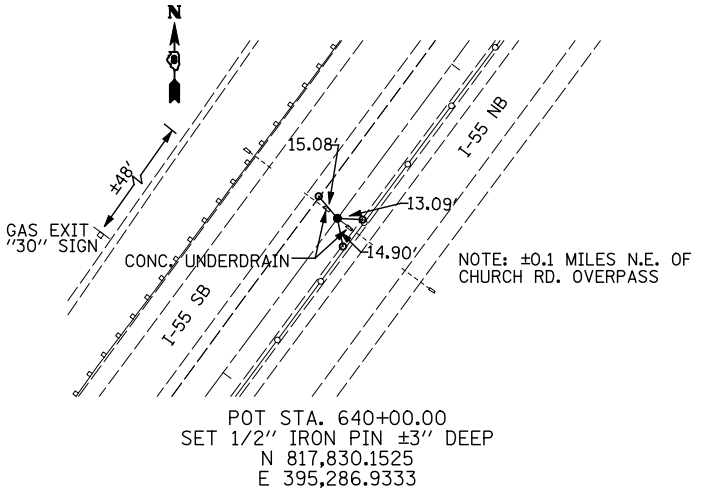
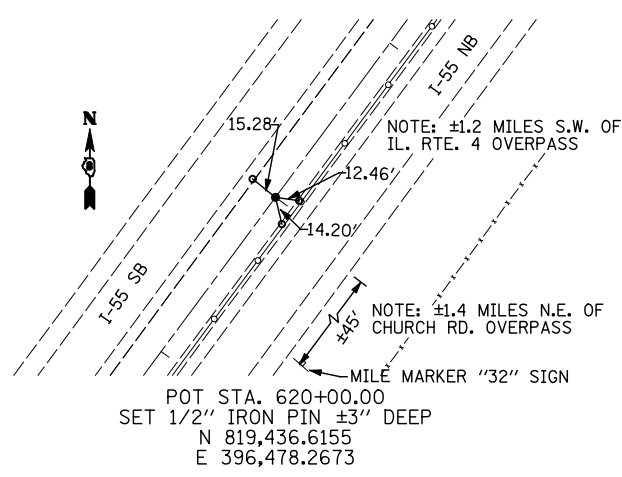
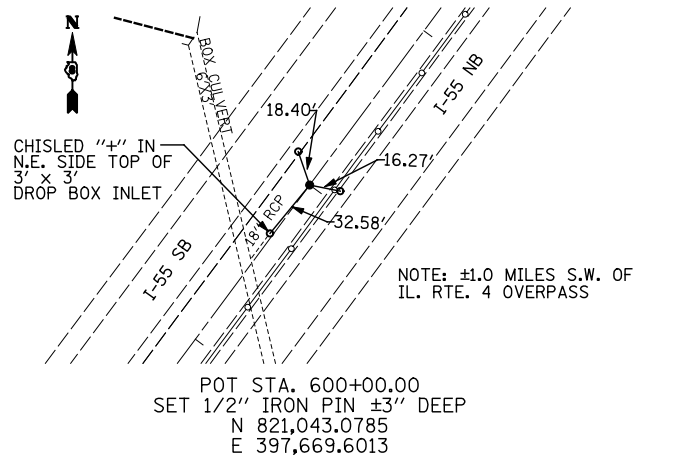
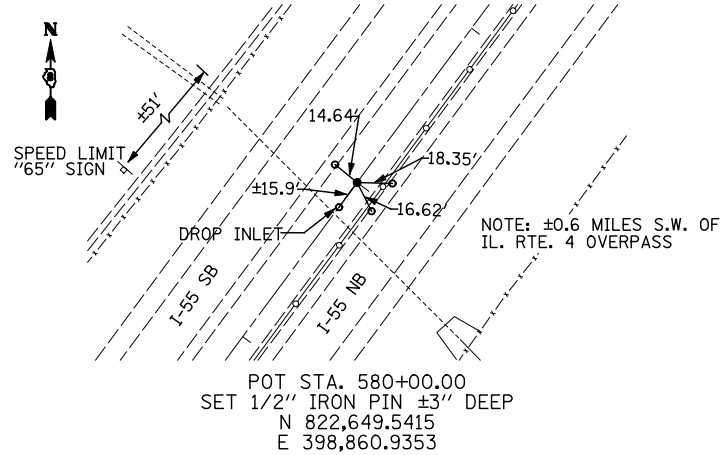
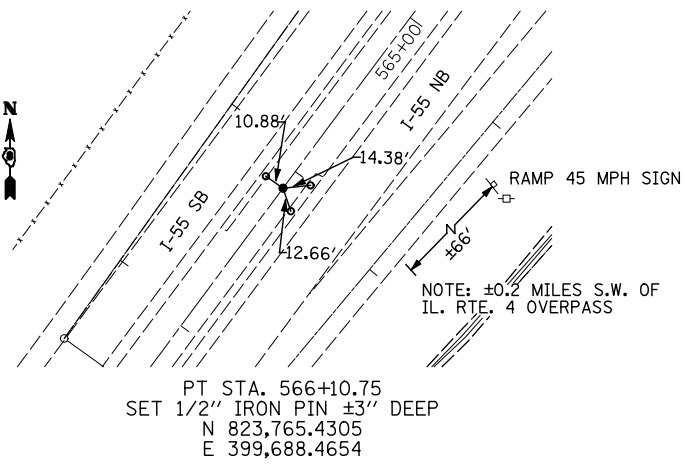
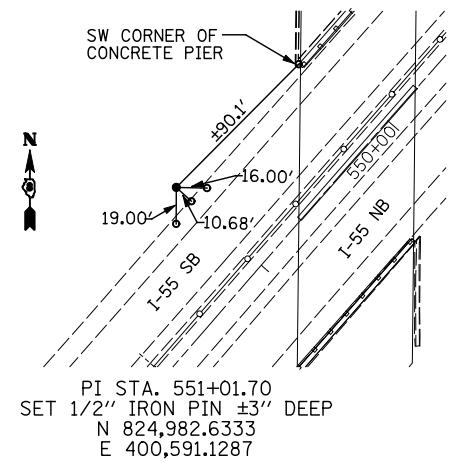
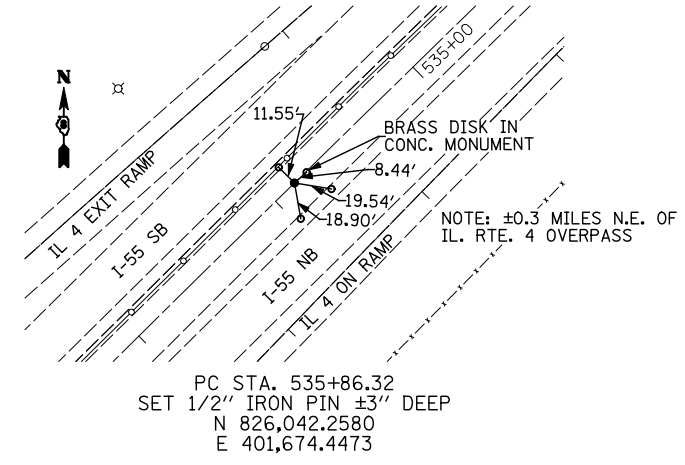
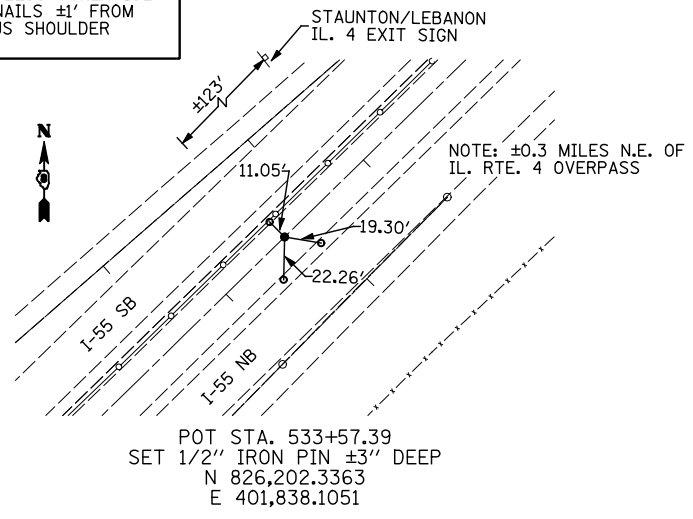
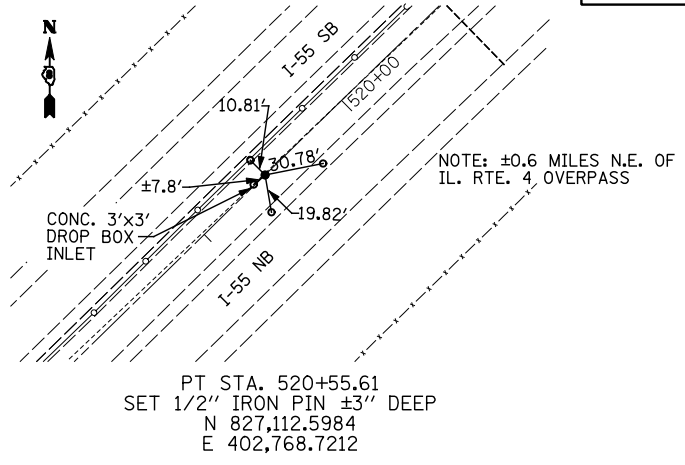
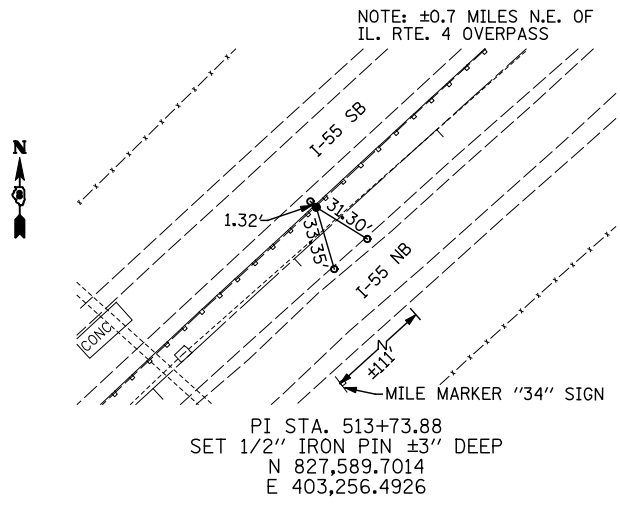


NOTE: ALL TIES, UNLESS OTHERWISE STATED, ARE MAG NAILS ±1' FROM EDGE OF BITUMINOUS SHOULDER



BM 13: CUT "□" ON N.W. CORNER OF 4'x4' DROP INLET IN MEDIAN OF I-55, @ ±1.5 MILES N. OF IL 140 ±31.25 MILE MARKER STA 661+20; 3.0' RT; ELEV 557.204

BM 14: CUT "□" ON N.W. BOLT OF W. LEG OF SIGN "WORDEN EXIT 13" @ (E. SIDE) OF I-55. ±32.23 MILE MARKER STA 607+98; 77.0' LT; ELEV 562.848

BM 15: CUT "□" IN CENTER OF HEADWALL OF DOUBLE BOX CULVERT (SN 060 2015), @ (E. SIDE) OF RAMP FOR NB I-55 TO IL 4. ±33.08 MILE MARKER STA 563+76; 120' LT; ELEV 550.734

BM 16: VOID DISTURBED

BM 17: CHISELED "X" ON N.W. BOLT OF W. LEG OF SIGN; ±1.85 MILES N. OF IL 4. STA 452+59; 105.0' LT; ELEV 581.304

FILE NAME =	USER NAME = \$(USER)	DESIGNED -	REVISED -
...\\CADD\876D99-ah-t-ATB.dgn		DRAWN - HMM	REVISED -
	PLOT SCALE = 100.0000' / IN.	CHECKED -	REVISED -
	PLOT DATE = 02/02/2012 17:31:09	DATE - NOVEMBER 2011	REVISED -

**STATE OF ILLINOIS
DEPARTMENT OF TRANSPORTATION**

ALIGNMENTS, TIES AND BENCHMARKS

SCALE:	SHEET NO.	OF SHEETS	STA.	TO STA.
--------	-----------	-----------	------	---------

F.A.I. RTE.	SECTION	COUNTY	TOTAL SHEETS	SHEET NO.
55	60-(1,2)RS-3	MADISON	212	33
CONTRACT NO. 76D99				
ILLINOIS FED. AID PROJECT				