

EXIST. CURVE C114  
 PI STA. = 102+58.56  
 $\Delta = 24^\circ 50' 30''$  (LT)  
 $D = 12^\circ 41' 21''$   
 $R = 451.53'$   
 $T = 99.45'$   
 $L = 195.77'$   
 $E = 10.82'$   
 $e = 0.08'/\text{FT.}$   
 P.C. STA. = 101+59.11  
 P.T. STA. = 103+54.88

EXIST. CURVE C115  
 PI STA. = 105+13.59  
 $\Delta = 32^\circ 18' 59''$  (LT)  
 $D = 11^\circ 34' 15''$   
 $R = 495.17'$   
 $T = 143.47'$   
 $L = 279.29'$   
 $E = 20.37'$   
 $e = 0.08'/\text{FT.}$   
 P.C. STA. = 103+70.12  
 P.T. STA. = 106+49.41

S.E. ATTAINED: STA. 101+59.11  
 TO STA. 103+51.11  
 S.E. REMOVED: STA. 105+85.41  
 TO STA. 107+77.41

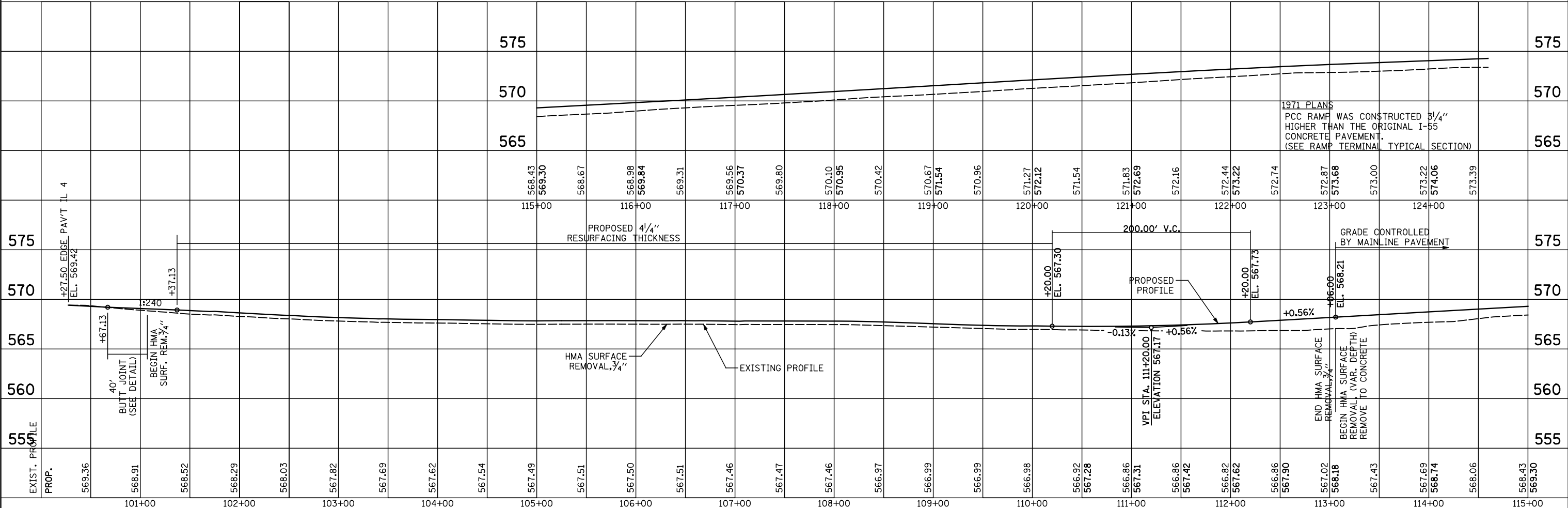
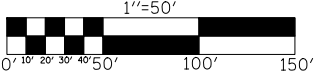
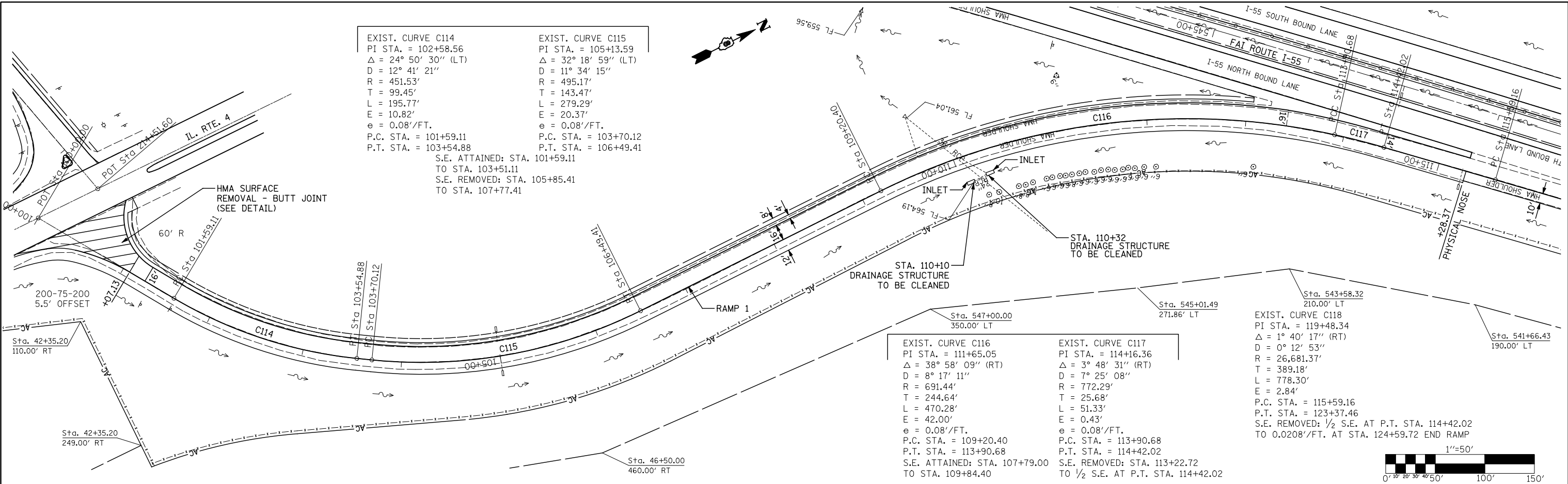
EXIST. CURVE C116  
 PI STA. = 111+65.05  
 $\Delta = 38^\circ 58' 09''$  (RT)  
 $D = 8^\circ 17' 11''$   
 $R = 691.44'$   
 $T = 244.64'$   
 $L = 470.28'$   
 $E = 42.00'$   
 $e = 0.08'/\text{FT.}$   
 P.C. STA. = 109+20.40  
 P.T. STA. = 113+90.68  
 S.E. ATTAINED: STA. 107+79.00  
 TO STA. 109+84.40

EXIST. CURVE C117  
 PI STA. = 114+16.36  
 $\Delta = 3^\circ 48' 31''$  (RT)  
 $D = 7^\circ 25' 08''$   
 $R = 772.29'$   
 $T = 25.68'$   
 $L = 51.33'$   
 $E = 0.43'$   
 $e = 0.08'/\text{FT.}$   
 P.C. STA. = 113+90.68  
 P.T. STA. = 114+42.02  
 S.E. REMOVED: STA. 113+22.72  
 TO  $\frac{1}{2}$  S.E. AT P.T. STA. 114+42.02

EXIST. CURVE C118  
 PI STA. = 119+48.34  
 $\Delta = 1^\circ 40' 17''$  (RT)  
 $D = 0^\circ 12' 53''$   
 $R = 26,681.37'$   
 $T = 389.18'$   
 $L = 778.30'$   
 $E = 2.84'$   
 P.C. STA. = 115+59.16  
 P.T. STA. = 123+37.46  
 S.E. REMOVED:  $\frac{1}{2}$  S.E. AT P.T. STA. 114+42.02  
 TO  $0.0208'/\text{FT.}$  AT STA. 124+59.72 END RAMP

PLAN	SURVEYED	DATE
	PLOTTED	
	CHECKED	
	APPROVED	
	FILE NAME	
	NO.	

PROFILE	SURVEYED	DATE
	PLOTTED	
	CHECKED	
	APPROVED	
	STRUCTURE	
	NOTATION	
	CHRD	



FILE NAME =	USER NAME = \$(USER)	DESIGNED -	REVISED -	<b>STATE OF ILLINOIS</b> <b>DEPARTMENT OF TRANSPORTATION</b>	<b>N.B. ENTRANCE RAMP 1 (IL 4)</b>	F.A.I. RTE.	SECTION	COUNTY	TOTAL SHEETS	SHEET NO.	
...\\eadd\876D99-Sh-T-P1nprf12.dgn		DRAWN -	REVISED -			55	601,2RS-3	MADISON	212	46	
		CHECKED -	REVISED -			CONTRACT NO. 76D99					
		DATE -	REVISED -			ILLINOIS FED. AID PROJECT					

Johnson, Depp & Quisenberry  
 CONSULTING ENGINEERS  
 Springfield, Illinois

SCALE: 1" = 50' SHEET NO. OF SHEETS STA. 100+00 TO STA. 116+00