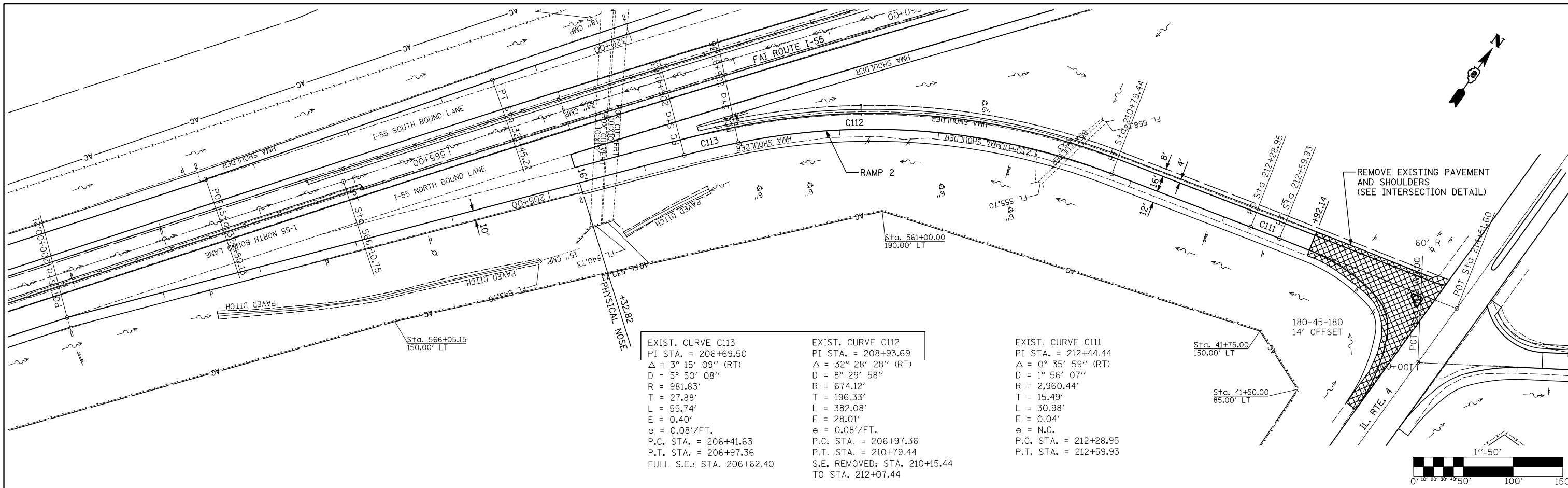


PLAN	SURVEYED	BY	DATE
	PLOTTED		
	CHECKED		
	AT		
	FILE NAME		
	NO.		

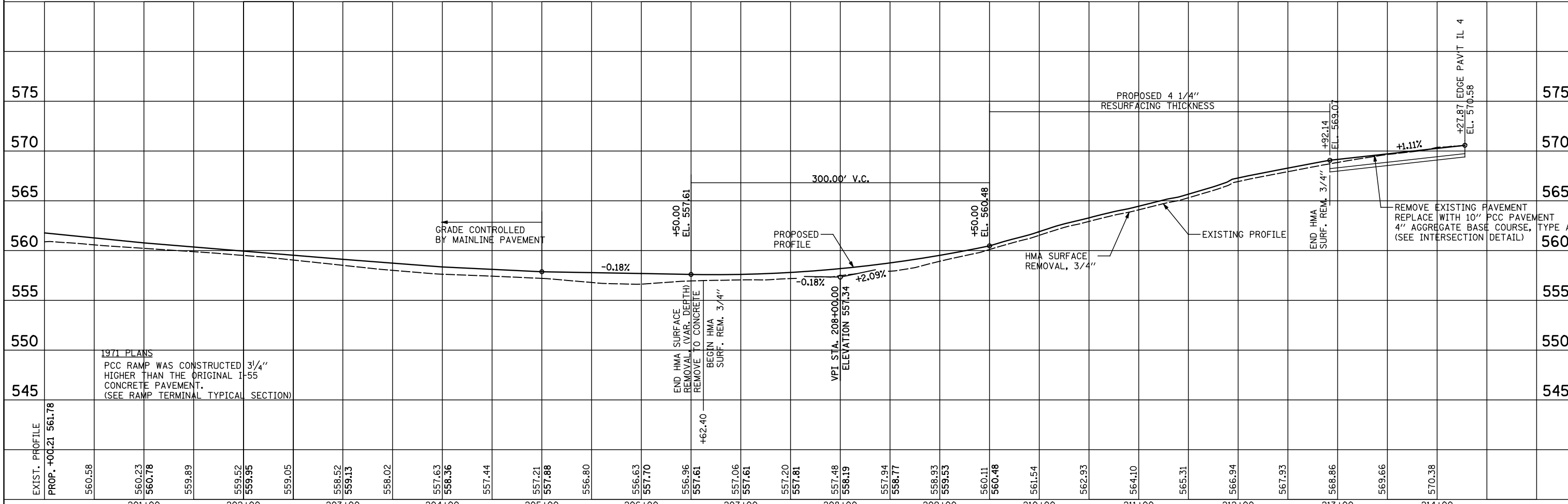
PROFILE	SURVEYED	BY	DATE
	PLOTTED		
	CHECKED		
	AT		
	FILE NAME		
	NO.		



EXIST. CURVE C113
 PI STA. = 206+69.50
 $\Delta = 3^\circ 15' 09''$ (RT)
 $D = 5^\circ 50' 08''$
 $R = 981.83'$
 $T = 27.88'$
 $L = 55.74'$
 $E = 0.40'$
 $e = 0.08'/FT.$
 P.C. STA. = 206+41.63
 P.T. STA. = 206+97.36
 FULL S.E.: STA. 206+62.40

EXIST. CURVE C112
 PI STA. = 208+93.69
 $\Delta = 32^\circ 28' 28''$ (RT)
 $D = 8^\circ 29' 58''$
 $R = 674.12'$
 $T = 196.33'$
 $L = 382.08'$
 $E = 28.01'$
 $e = 0.08'/FT.$
 P.C. STA. = 206+97.36
 P.T. STA. = 210+79.44
 S.E. REMOVED: STA. 210+15.44
 TO STA. 212+07.44

EXIST. CURVE C111
 PI STA. = 212+44.44
 $\Delta = 0^\circ 35' 59''$ (RT)
 $D = 1^\circ 56' 07''$
 $R = 2,960.44'$
 $T = 15.49'$
 $L = 30.98'$
 $E = 0.04'$
 $e = N.C.$
 P.C. STA. = 212+28.95
 P.T. STA. = 212+59.93



FILE NAME =	USER NAME = \$USER	DESIGNED -	REVISED -	STATE OF ILLINOIS DEPARTMENT OF TRANSPORTATION	N.B. EXIT RAMP 2 (IL 4)	F.A.I. RTE.	SECTION	COUNTY	TOTAL SHEETS	SHEET NO.
...\\eadd\876D99-Sht-P1nprf13.dgn		DRAWN -	REVISED -			55	601,2RS-3	MADISON	212	47
PLOT SCALE = 1/8" = 1' / IN.		CHECKED -	REVISED -			CONTRACT NO. 76D99				
PLOT DATE = 02/02/2012 17:39:23		DATE -	REVISED -			ILLINOIS FED. AID PROJECT				

Johnson, Depp & Quisenberry
 CONSULTING ENGINEERS
 Springfield, Illinois