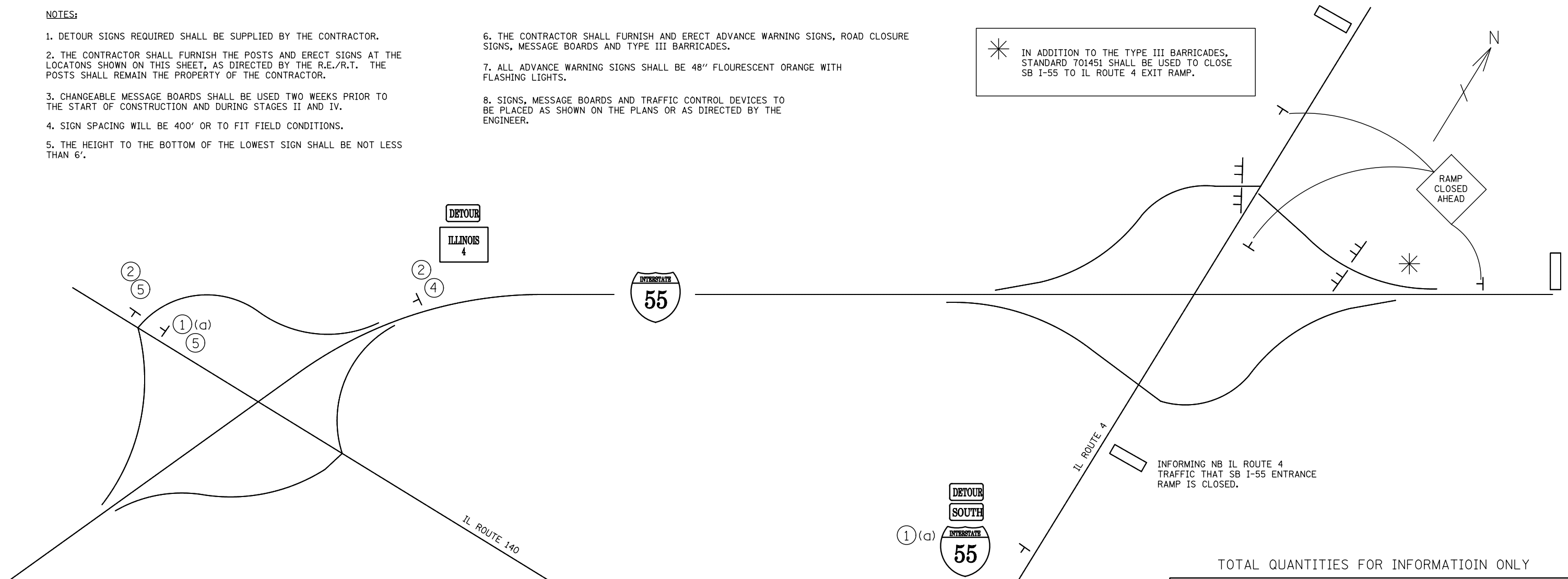


NOTES:

1. DETOUR SIGNS REQUIRED SHALL BE SUPPLIED BY THE CONTRACTOR.
2. THE CONTRACTOR SHALL FURNISH THE POSTS AND ERECT SIGNS AT THE LOCATIONS SHOWN ON THIS SHEET, AS DIRECTED BY THE R.E./R.T. THE POSTS SHALL REMAIN THE PROPERTY OF THE CONTRACTOR.
3. CHANGEABLE MESSAGE BOARDS SHALL BE USED TWO WEEKS PRIOR TO THE START OF CONSTRUCTION AND DURING STAGES II AND IV.
4. SIGN SPACING WILL BE 400' OR TO FIT FIELD CONDITIONS.
5. THE HEIGHT TO THE BOTTOM OF THE LOWEST SIGN SHALL BE NOT LESS THAN 6'.

6. THE CONTRACTOR SHALL FURNISH AND ERECT ADVANCE WARNING SIGNS, ROAD CLOSURE SIGNS, MESSAGE BOARDS AND TYPE III BARRICADES.
7. ALL ADVANCE WARNING SIGNS SHALL BE 48" FLOURESCENT ORANGE WITH FLASHING LIGHTS.
8. SIGNS, MESSAGE BOARDS AND TRAFFIC CONTROL DEVICES TO BE PLACED AS SHOWN ON THE PLANS OR AS DIRECTED BY THE ENGINEER.

* IN ADDITION TO THE TYPE III BARRICADES, STANDARD 701451 SHALL BE USED TO CLOSE SB I-55 TO IL ROUTE 4 EXIT RAMP.



INFORMING NB IL ROUTE 4 TRAFFIC THAT SB I-55 ENTRANCE RAMP IS CLOSED.

QUANTITIES FOR INFORMATION ONLY

STAGE II SIGNING

①(a)		4 EACH
②		3 EACH
③		3 EACH
④		1 EACH
⑤		2 EACH
⑥		1 EACH

- SIGN ARRAY
- TYPE III BARRICADE
- MESSAGE BOARD

NOT TO SCALE

TOTAL QUANTITIES FOR INFORMATION ONLY

SIGNS TO BE PROVIDED BY CONTRACTOR

	8 EACH
	6 EACH
	4 EACH
	6 EACH
	3 EACH
	3 EACH
	1 EACH
	2 EACH
	3 EACH

FILE NAME = ...load\0876D99-Shit-Staging.dgn	USER NAME = \$(USER)	DESIGNED -	REVISED -
Johnson, Depp & Quisenberry CONSULTING ENGINEERS Springfield, Illinois	PLOT SCALE = 1200.0000 "/> <td>DRAWN -</td> <td>REVISED -</td>	DRAWN -	REVISED -
PLOT DATE = 02/02/2012 17:45:38	DATE -	CHECKED -	REVISED -

**STATE OF ILLINOIS
DEPARTMENT OF TRANSPORTATION**

**STAGE II DETOUR SIGNING
FOR SOUTHBOUND RAMP CLOSURES**

SCALE: SHEET NO. OF SHEETS STA. TO STA.

F.A.I. RTE.	SECTION	COUNTY	TOTAL SHEETS	SHEET NO.
55	60-1,21R5-3	MADISON	212	56
CONTRACT NO. 76D99				
ILLINOIS FED. AID PROJECT				