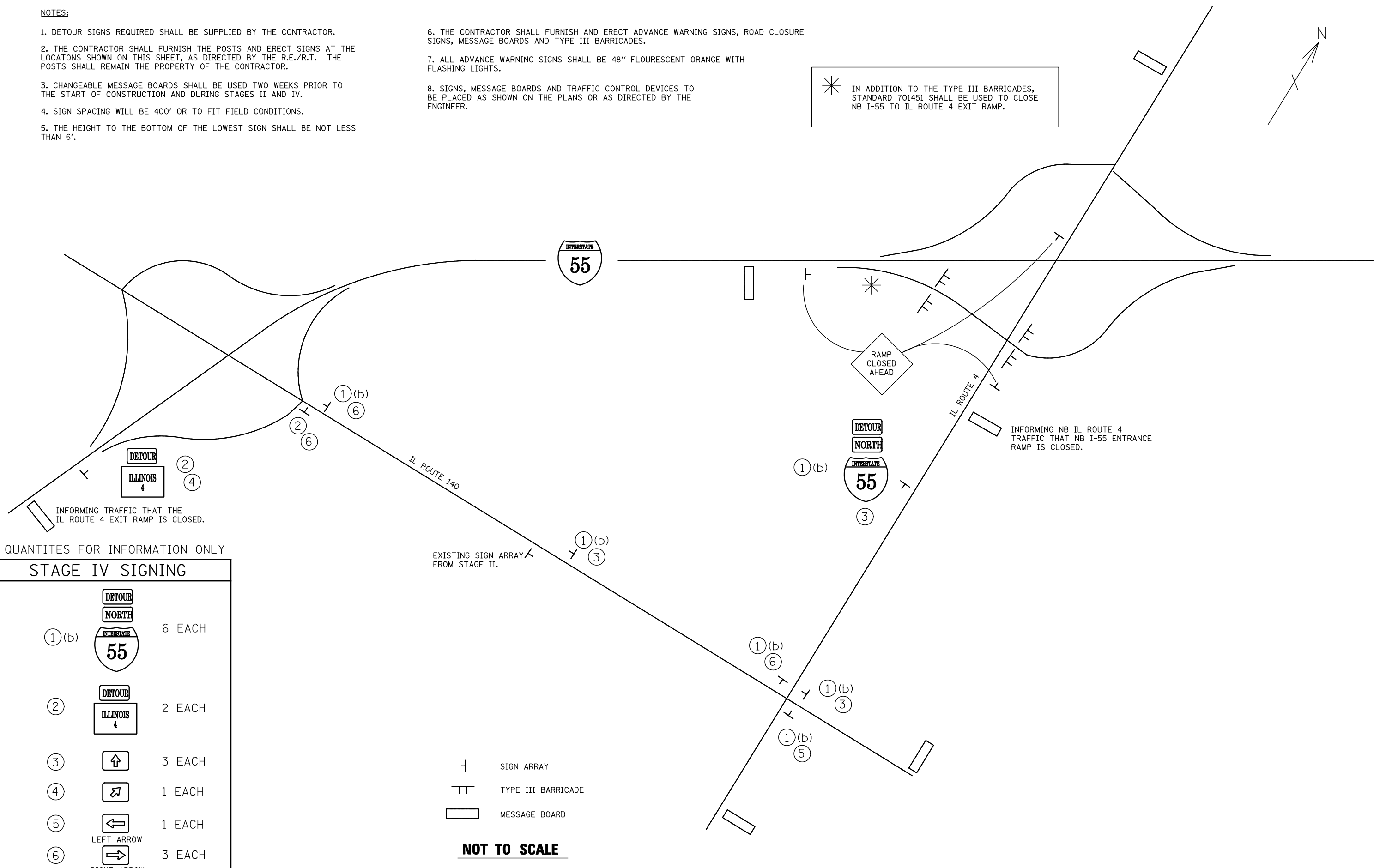
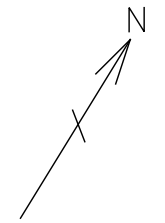


NOTES:

1. DETOUR SIGNS REQUIRED SHALL BE SUPPLIED BY THE CONTRACTOR.
2. THE CONTRACTOR SHALL FURNISH THE POSTS AND ERECT SIGNS AT THE LOCATIONS SHOWN ON THIS SHEET, AS DIRECTED BY THE R.E./R.T. THE POSTS SHALL REMAIN THE PROPERTY OF THE CONTRACTOR.
3. CHANGEABLE MESSAGE BOARDS SHALL BE USED TWO WEEKS PRIOR TO THE START OF CONSTRUCTION AND DURING STAGES II AND IV.
4. SIGN SPACING WILL BE 400' OR TO FIT FIELD CONDITIONS.
5. THE HEIGHT TO THE BOTTOM OF THE LOWEST SIGN SHALL BE NOT LESS THAN 6'.

6. THE CONTRACTOR SHALL FURNISH AND ERECT ADVANCE WARNING SIGNS, ROAD CLOSURE SIGNS, MESSAGE BOARDS AND TYPE III BARRICADES.
7. ALL ADVANCE WARNING SIGNS SHALL BE 48" FLOURESCENT ORANGE WITH FLASHING LIGHTS.
8. SIGNS, MESSAGE BOARDS AND TRAFFIC CONTROL DEVICES TO BE PLACED AS SHOWN ON THE PLANS OR AS DIRECTED BY THE ENGINEER.

* IN ADDITION TO THE TYPE III BARRICADES, STANDARD 701451 SHALL BE USED TO CLOSE NB I-55 TO IL ROUTE 4 EXIT RAMP.



QUANTITIES FOR INFORMATION ONLY

STAGE IV SIGNING

①(b)		6 EACH
②		2 EACH
③		3 EACH
④		1 EACH
⑤		1 EACH
⑥		3 EACH

EXISTING SIGN ARRAY FROM STAGE II.

- SIGN ARRAY
- TYPE III BARRICADE
- MESSAGE BOARD

NOT TO SCALE

FILE NAME = ...load\0876099-Shit-Staging.dgn	USER NAME = \$(USER)	DESIGNED -	REVISED -
Johnson, Depp & Quisenberry CONSULTING ENGINEERS Springfield, Illinois	PLOT SCALE = 1200.0000 "/> IN.	DRAWN -	REVISED -
	PLOT DATE = 02/02/2012 17:45:54	CHECKED -	REVISED -
		DATE -	REVISED -

**STATE OF ILLINOIS
DEPARTMENT OF TRANSPORTATION**

STAGE IV DETOUR SIGNING FOR NORTHBOUND RAMP CLOSURES			
SCALE:	SHEET NO.	OF SHEETS	STA. TO STA.

F.A.I. RTE.	SECTION	COUNTY	TOTAL SHEETS	SHEET NO.
55	60-(1,2)RS-3	MADISON	212	57
CONTRACT NO. 76D99				
ILLINOIS FED. AID PROJECT				