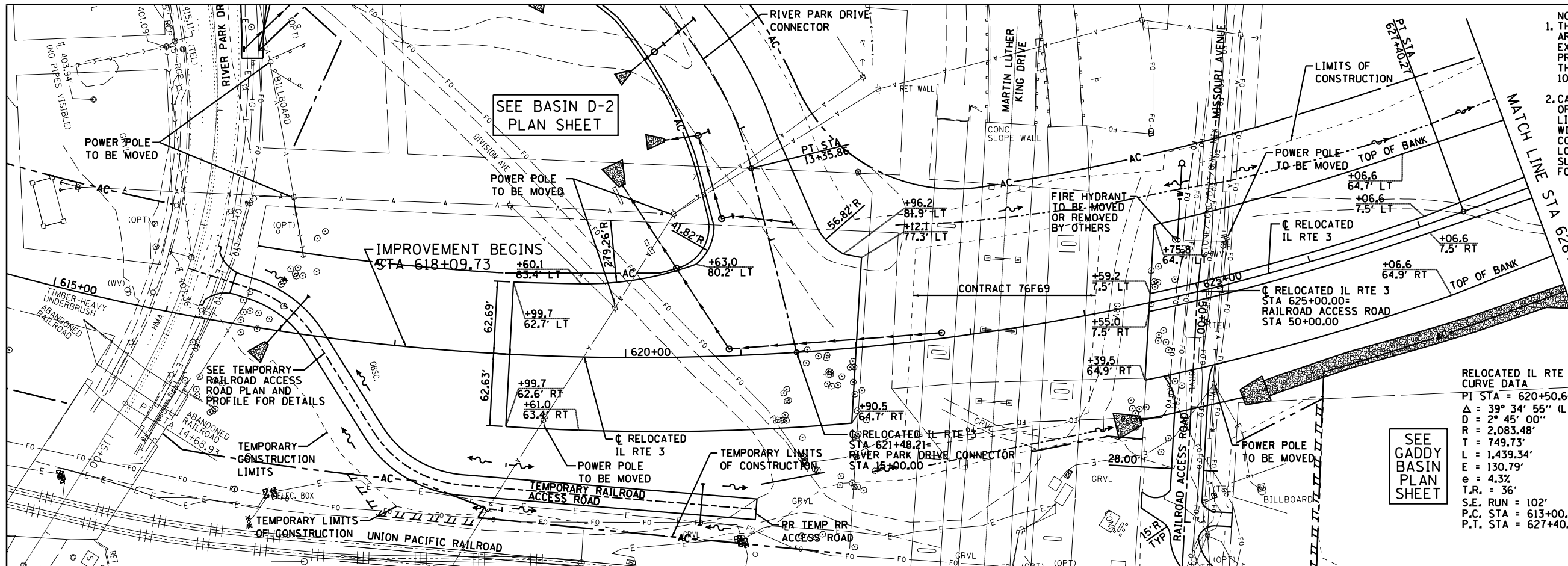


PLAN	SURVEYED	DATE
	PLOTTED	BY
	ALIGNED	CHECKED
	NOTE BOOK	NO.
	NO. 1	
	NO. 2	
	NO. 3	
	NO. 4	
	NO. 5	
	NO. 6	
	NO. 7	
	NO. 8	
	NO. 9	
	NO. 10	

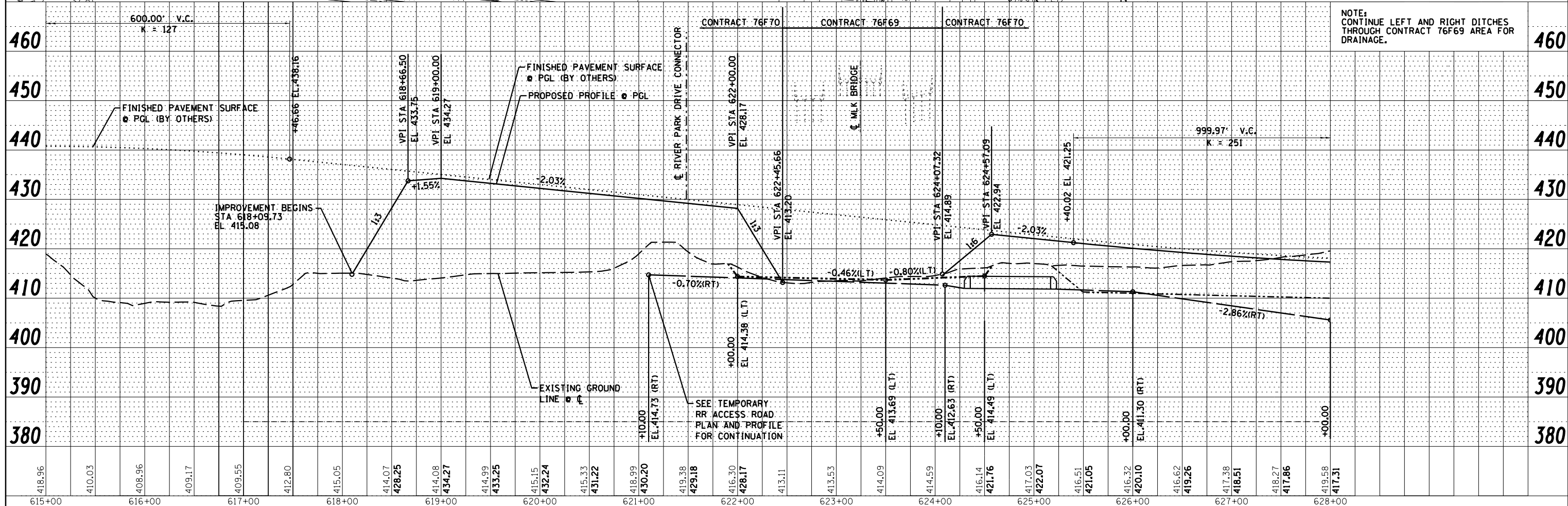
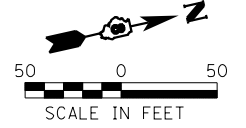
PROFILE	SURVEYED	DATE
	PLOTTED	BY
	GRADES CHECKED	CHECKED
	STRUCTURE	NOTATIONS
	NO.	
	NO. 1	
	NO. 2	
	NO. 3	
	NO. 4	
	NO. 5	
	NO. 6	
	NO. 7	
	NO. 8	
	NO. 9	
	NO. 10	



- NOTES:
1. THERE ARE SEVERAL FIBER OPTICS LINES IN THE AREA. THE CONTRACTOR SHALL HAND LOCATE AND EXPOSE THESE PRIOR TO EXCAVATING FOR THE PROJECT PARTICULARLY ALONG MISSOURI AVE. THIS WORK SHALL BE PAID FOR UNDER ARTICLE 10904.
 2. CAUTION, EXISTING UTILITIES, INCLUDING FIBER OPTIC, ELECTRICAL, TELEPHONE, WATER, AERIAL LINES AND OTHER FACILITIES, ARE LOCATED WITHIN THE LIMITS OF CONSTRUCTION. THE CONTRACTOR SHALL VERIFY THE UTILITY LOCATIONS PRIOR TO CONSTRUCTION. SEE SUBSURFACE UNDERGROUND ENGINEERING PLANS FOR ADDITIONAL INFORMATION.

SEE GADDY BASIN PLAN SHEET

RELOCATED IL RTE 3
CURVE DATA
 PI STA = 620+50.65
 $\Delta = 39^\circ 34' 55''$ (LT)
 $D = 2^\circ 45' 00''$
 $R = 2,083.48'$
 $T = 749.73'$
 $L = 1,439.34'$
 $E = 130.79'$
 $e = 4.32'$
 $T.R. = 36'$
 $S.E. RUN = 102'$
 P.C. STA = 613+00.92
 P.T. STA = 627+40.27



NOTE:
CONTINUE LEFT AND RIGHT DITCHES THROUGH CONTRACT 76F69 AREA FOR DRAINAGE.

Farnsworth GROUP, INC.
 2709 McGraw Drive
 Bloomington, Illinois 61704
 309/663-8435, 309/663-1571 fax

USER NAME = *USER*	DESIGNED - JJO	REVISED - 02/06/13
	DRAWN - JJO	REVISED - 03/18/13
PLOT SCALE = *SCALE*	CHECKED - PJM	REVISED - 05/13/13
PLOT DATE = *DATE*	DATE - 10/18/12	REVISED -

STATE OF ILLINOIS
DEPARTMENT OF TRANSPORTATION

RELOCATED IL RTE 3
PLAN & PROFILE

SCALE: SHEET NO. OF SHEETS STA. TO STA.

F.A.P. RTE.	SECTION	COUNTY	TOTAL SHEETS	SHEET NO.
788	520-1-2-1	ST. CLAIR	121	17
CONTRACT NO. 76F70				
ILLINOIS FED. AID PROJECT				