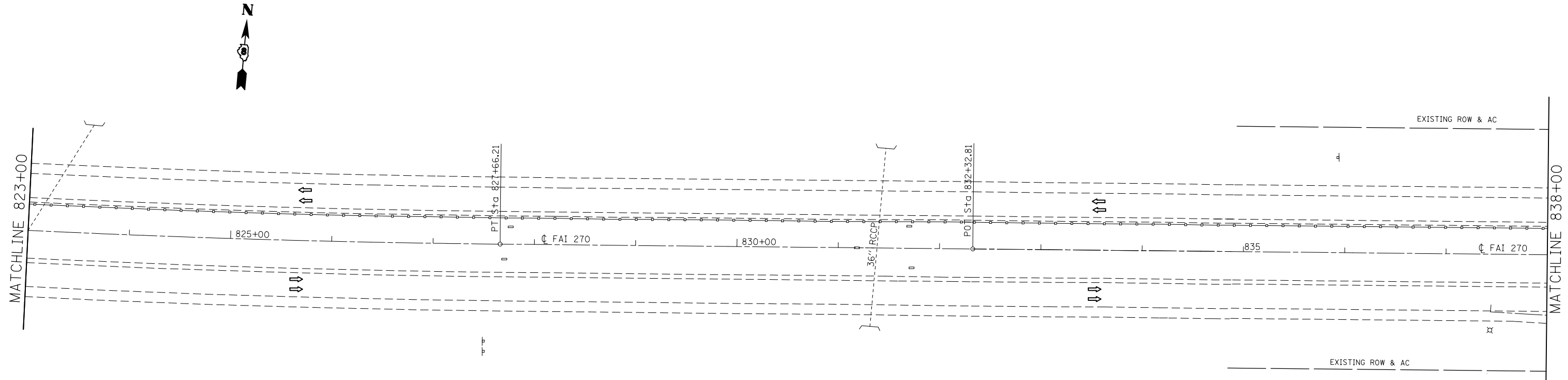
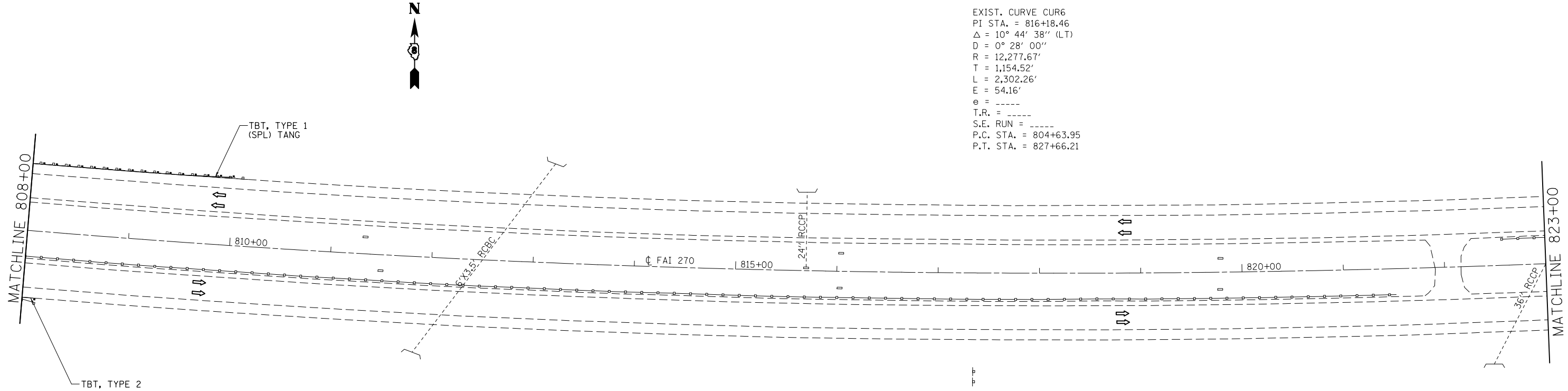


EXIST. CURVE CUR6
 PI STA. = 816+18.46
 $\Delta = 10^\circ 44' 38''$ (LT)
 $D = 0^\circ 28' 00''$
 $R = 12,277.67'$
 $T = 1,154.52'$
 $L = 2,302.26'$
 $E = 54.16'$
 $e = \text{-----}$
 $T.R. = \text{-----}$
 $S.E. \text{ RUN} = \text{-----}$
 $P.C. \text{ STA.} = 804+63.95$
 $P.T. \text{ STA.} = 827+66.21$



FILE NAME =	USER NAME = harbaughrd	DESIGNED -	REVISED -
et:\pw\work\p1dot\harbaughrd\0308628\0376f97-sht-plan2.dgn		DRAWN -	REVISED -
	PLOT SCALE = 100.0000' / in.	CHECKED -	REVISED -
	PLOT DATE = 3/22/2013	DATE -	REVISED -

**STATE OF ILLINOIS
 DEPARTMENT OF TRANSPORTATION**

PLAN SHEET

SCALE: N/A SHEET NO. 21 OF 23 SHEETS STA. 808+00 TO STA. 838+00

F.A.I. RTE.	SECTION	COUNTY	TOTAL SHEETS	SHEET NO.
270	60-(1,2,3,4,5,6)J-1	MADISON	33	30
CONTRACT NO. 76F97				
FED. ROAD DIST. NO.		ILLINOIS FED. AID PROJECT		