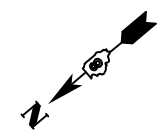
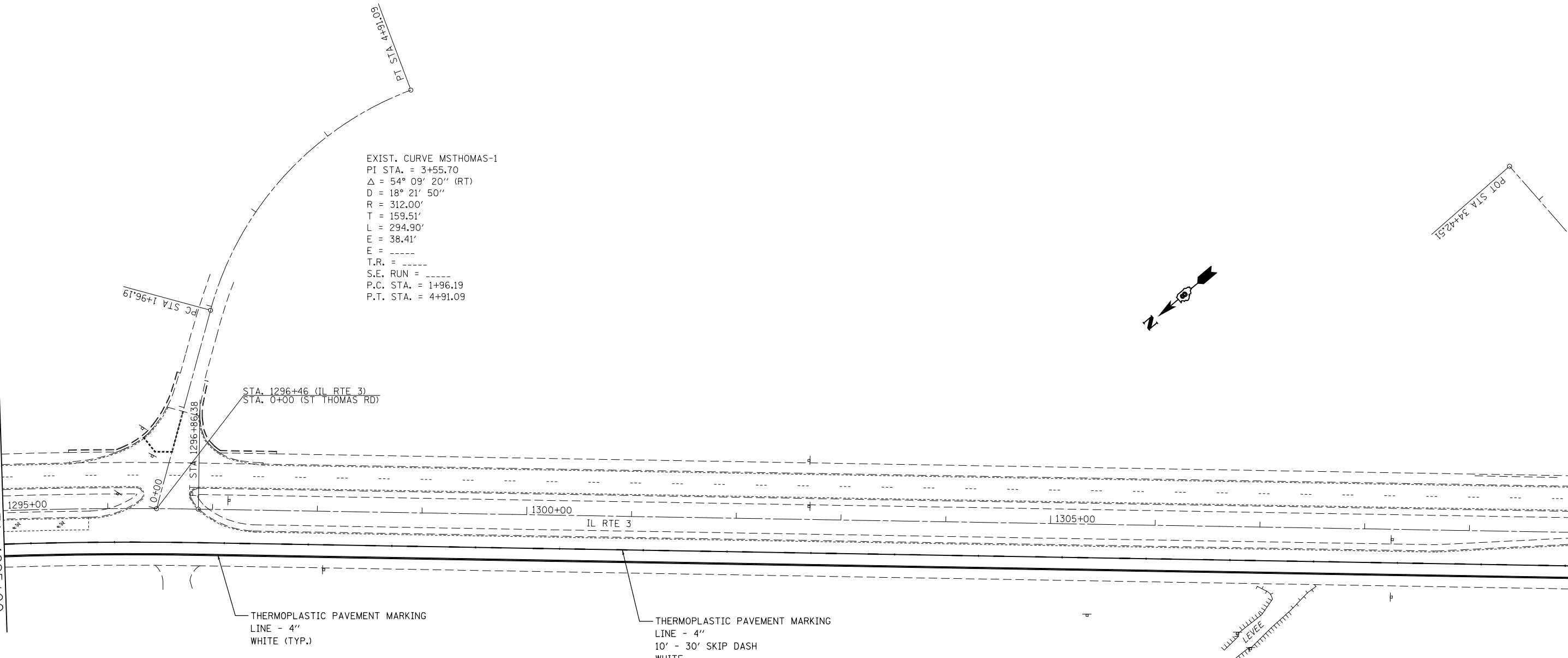


EXIST. CURVE MSTHOMAS-1  
 PI STA. = 3+55.70  
 $\Delta = 54^\circ 09' 20''$  (RT)  
 D = 18° 21' 50"  
 R = 312.00'  
 T = 159.51'  
 L = 294.90'  
 E = 38.41'  
 E = ----  
 T.R. = ----  
 S.E. RUN = ----  
 P.C. STA. = 1+96.19  
 P.T. STA. = 4+91.09



MATCHLINE STA. 1295+00

MATCHLINE STA. 1310+00



THERMOPLASTIC PAVEMENT MARKING  
 LINE - 4"  
 WHITE (TYP.)

THERMOPLASTIC PAVEMENT MARKING  
 LINE - 4"  
 10' - 30' SKIP DASH  
 WHITE  
 WITH RAISED REFLECTIVE PAVEMENT MARKERS  
 ONE-WAY CRYSTAL  
 @80' CENTERS (TYP.)

FILE NAME =	USER NAME = elyaskordto	DESIGNED -	REVISED -
et:\pw\work\pmdot\elyaskordto\10316383\076g06-sht-pmk.dgn		DRAWN -	REVISED -
	PLOT SCALE = 100.0000' / in.	CHECKED -	REVISED -
	PLOT DATE = 4/12/2013	DATE -	REVISED -

**STATE OF ILLINOIS  
 DEPARTMENT OF TRANSPORTATION**

**PAVEMENT MARKING**

SCALE: 1" = 50'    SHEET NO. 10 OF 19 SHEETS    STA. 1295+00 TO STA. 1310+00

F.A.P. RTE.	SECTION	COUNTY	TOTAL SHEETS	SHEET NO.
2	(101,102)RS-2, 202RS-4	MADISON	69	53
FED. ROAD DIST. NO. ILLINOIS FED. AID PROJECT			CONTRACT NO. 76G06	