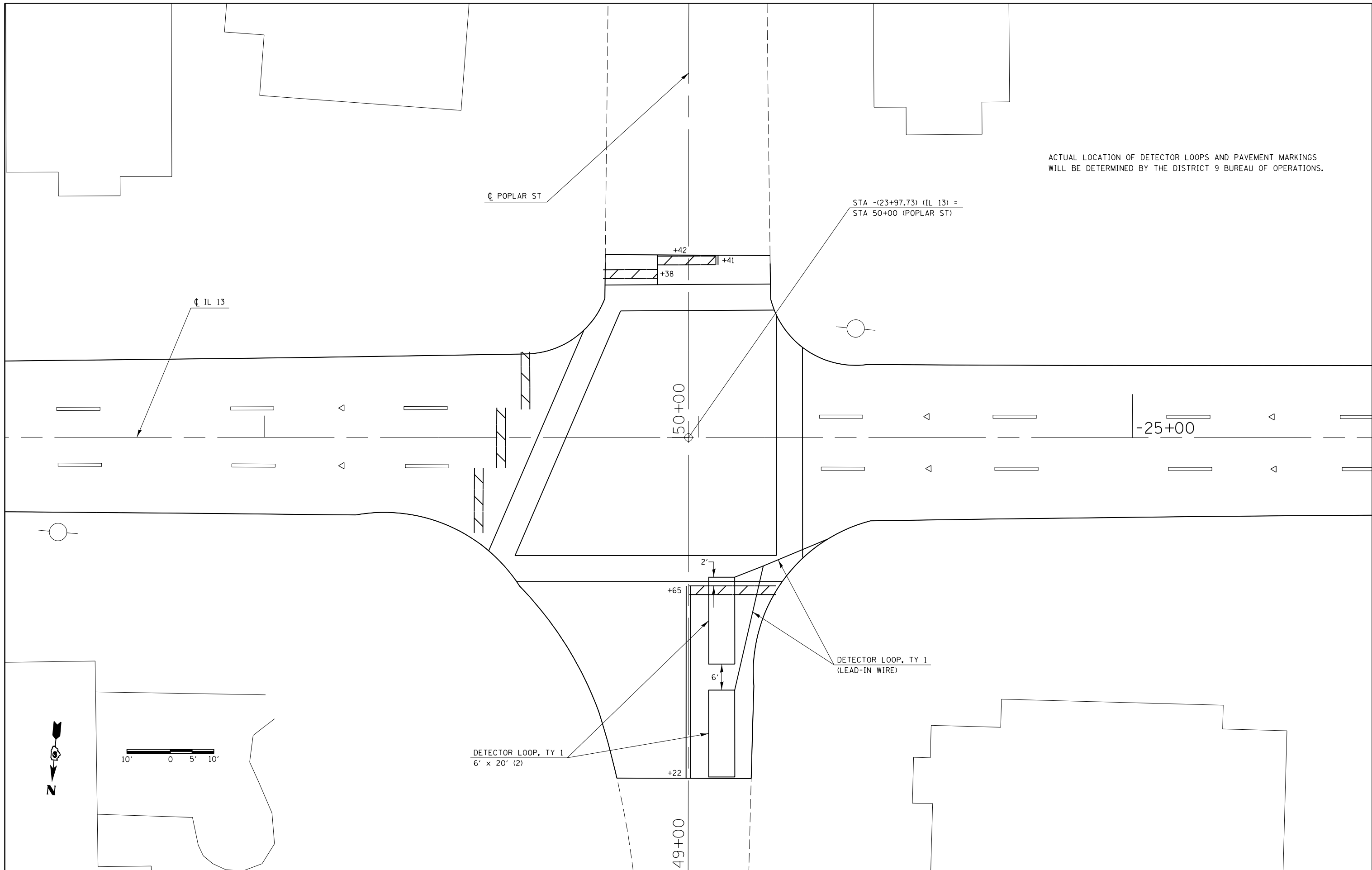


ACTUAL LOCATION OF DETECTOR LOOPS AND PAVEMENT MARKINGS  
WILL BE DETERMINED BY THE DISTRICT 9 BUREAU OF OPERATIONS.



FILE NAME = c:\pwork\pwork\kellykd\0315140\7833	USER NAME = #USER# -sh-to-pln.dgn	DESIGNED - DRAWN -	REVISED - REVISED -
#MODELNAME#	PLOT SCALE = 20.0000' / in. PLOT DATE = 1/4/2013	CHECKED - DATE -	REVISED - REVISED -

**STATE OF ILLINOIS  
DEPARTMENT OF TRANSPORTATION**

**INTERSECTION DETAILS  
POPLAR STREET**

SCALE: SHEET OF SHEETS STA. TO STA.

F.A.P. RTE.	SECTION	COUNTY	TOTAL SHEETS	SHEET NO.
331	(5-2,6,12-1)RS-3	JACKSON	27	21
CONTRACT NO. 78331				
ILLINOIS FED. AID PROJECT				