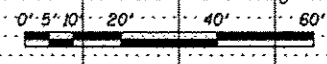
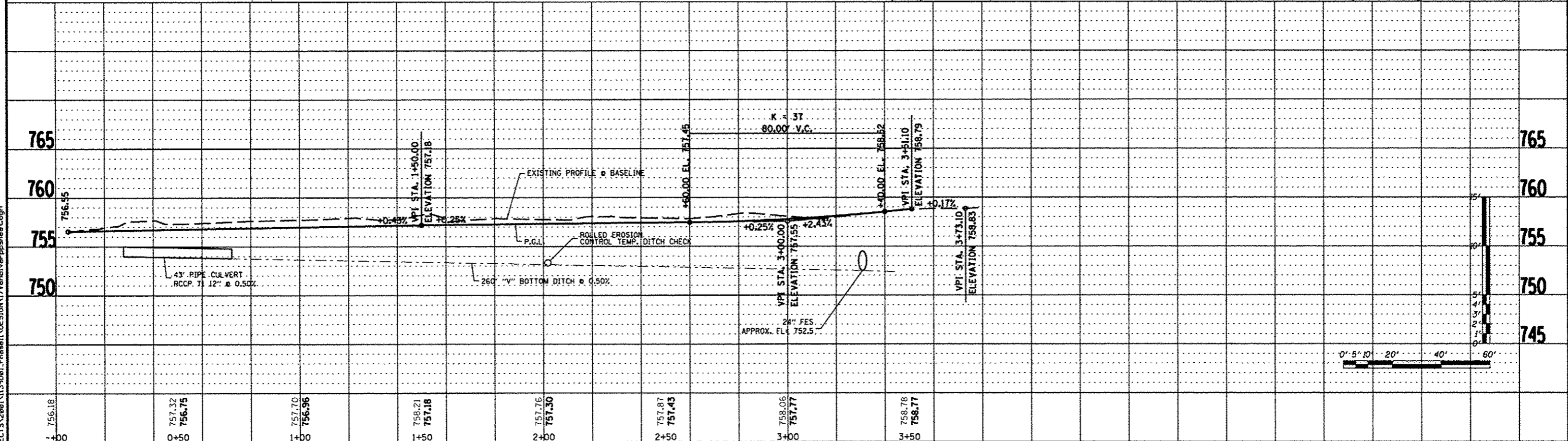
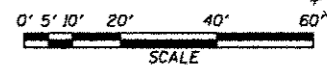


PROP. CURVE C1
 PI STA. = 0+46.83
 $\Delta = 89^\circ 19' 49''$ (L.T.)
 $D = 163^\circ 42' 08''$
 $R = 35.00'$
 $T = 34.59'$
 $L = 54.57'$
 $E = 14.21'$
 $e =$
 $T.R. =$
 $S.E. RUN =$
 $P.C. STA = 0+12.23$
 $P.T. STA = 0+66.80$

NOTE: "STOP-DISMOUNT YOUR BIKE" SIGNS
 WILL BE INSTALLED ON EACH SIDE
 OF THE PATH INTERSECTION CURVES.

NOTE: MULTI-USE PATH SHALL HAVE
 5' MIN. SEPARATION FROM
 EDGE OF PAVEMENT.

PROP. CURVE C2
 PI STA. = 3+44.23
 $\Delta = 90^\circ 00' 00''$ (RT)
 $D = 572^\circ 57' 28''$
 $R = 10.00'$
 $T = 10.00'$
 $L = 15.71'$
 $E = 4.14'$
 $e =$
 $T.R. =$
 $S.E. RUN =$
 $P.C. STA = 3+34.23$
 $P.T. STA = 3+49.93$



REVISION	DATE	BY	REMARKS
1	03/22/13	TJA	ADD COMMENTS FROM JAN. 28, 2013

WINNEBAGO COUNTY
VILLAGE OF CHERRY VALLEY
PERRYVILLE PATH SOUTHEAST CONNECTION

PERRYVILLE PATH PLAN & PROFILE
 STA. 0+00.00 - STA. 3+73.10

SECTION	COUNTY	TOTAL SHEETS	SHEET NO.
01-00302-00-BT	WINNEBAGO	124	17

WHA #: 1139D01 DATE: 03/01/2013

FILE = S:\PROJECTS\2008\1139D01_Phase1\DESIGN\17\perryville\perryville.dgn