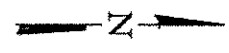
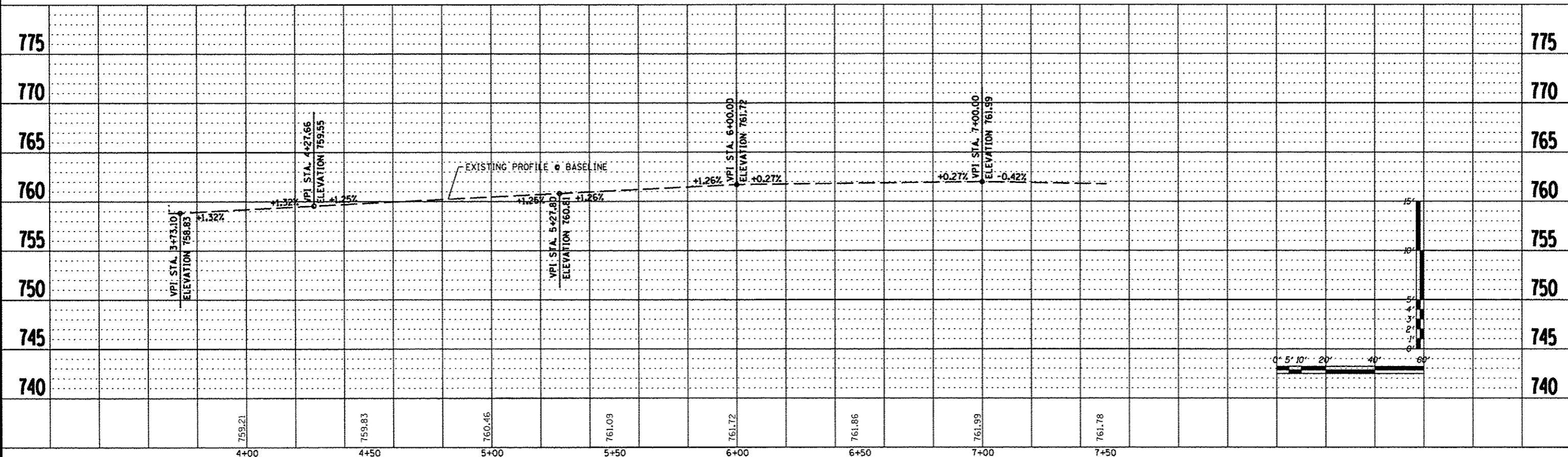
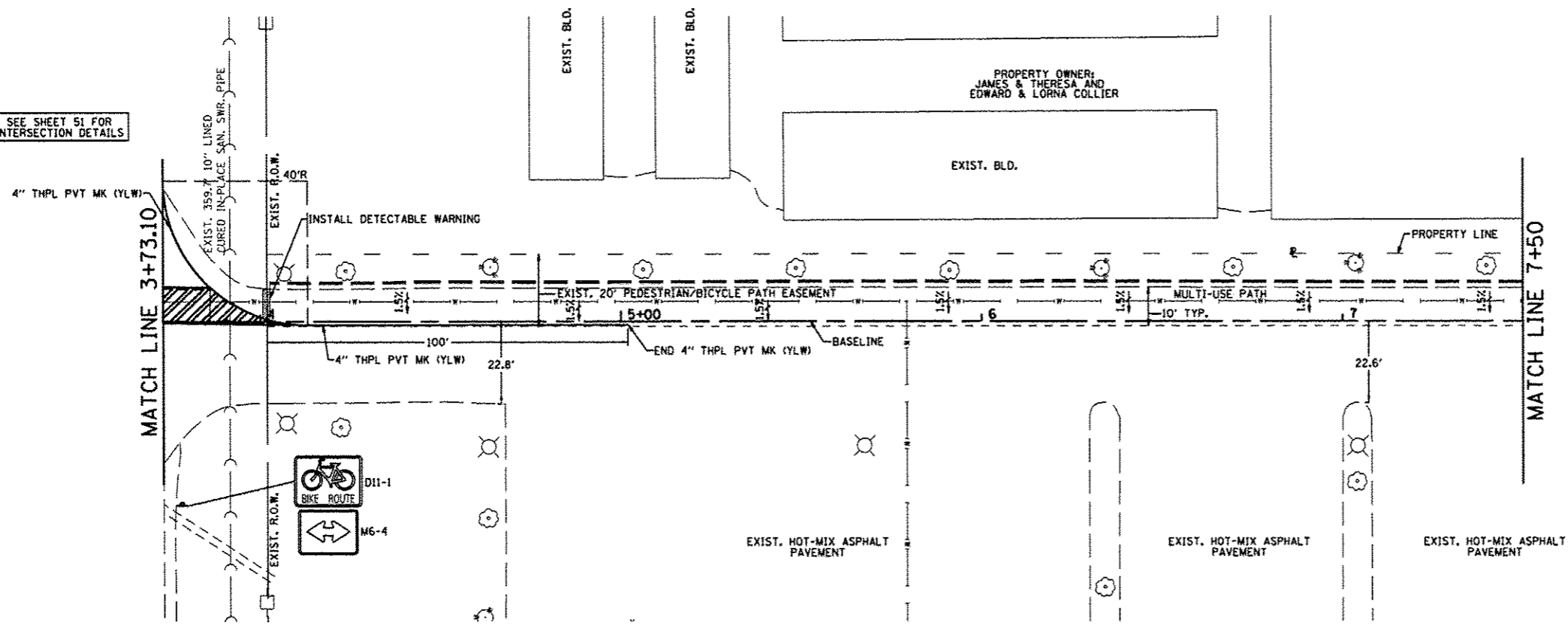


BENCH MARK: #1  
 DESC. STAINLESS STEEL ROD IN PVC HANDHOLE  
 LOCATED 27' SOUTH OF E BELLSCHOOL ROAD,  
 80' NORTH OF E WESTBOUND HARRISON ROAD AND  
 28' EAST OF LIGHT POLE.  
 ELEV. 773.46



SEE SHEET 51 FOR  
 INTERSECTION DETAILS



FILE: S:\PROJECTS\2008\1139001\Phase1\DESIGN\BP\Perking\Estement\ppsheet.dgn

REVISION	DATE	BY	REMARKS
#1	03/22/13	TJA	DOT COMMENTS FROM JAN. 28, 2013

**WINNEBAGO COUNTY**  
**VILLAGE OF CHERRY VALLEY**  
**PERRYVILLE PATH SOUTHEAST CONNECTION**

**PERRYVILLE PATH PLAN & PROFILE**  
 STA. 3+73.10 - STA. 7+50.00

SECTION	COUNTY	TOTAL SHEETS	SHEET NO.
01-00302-00-BT	WINNEBAGO		
STA. 0+00.00	STA. 172+20.37	124	18

WHA #: 1139001 DATE: 03/01/2013