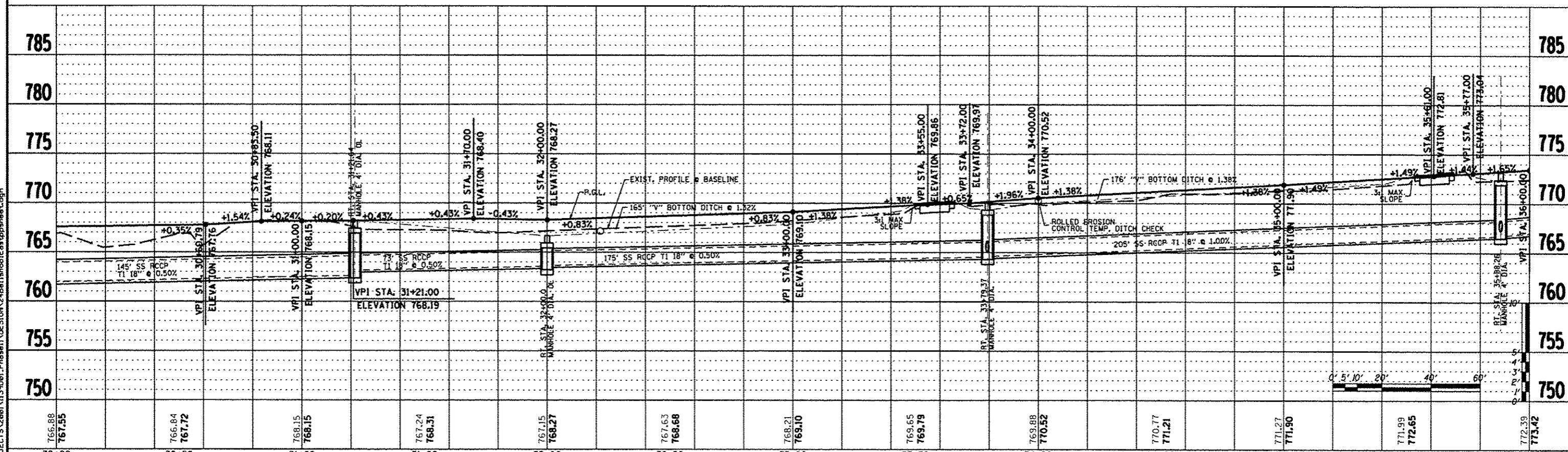
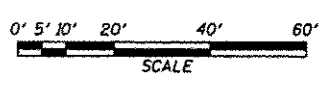


NOTE: MULTI-USE PATH SHALL HAVE 5' MIN. SEPARATION FROM EDGE OF PAVEMENT.

BENCH MARK #1
DESC. STAINLESS STEEL ROD IN PVC HANDHOLE
LOCATED 27' SOUTH OF S BELL SCHOOL ROAD,
80' NORTH OF WESTBOUND HARRISON ROAD AND
28' EAST OF LIGHT POLE.
ELEV. 773.46

| PROP. CURVE C15 | PROP. CURVE C16 |
|----------------------|----------------------|
| PI STA. = 31+38.05 | PI STA. = 31+68.88 |
| Δ = 17° 41' 27" (LT) | Δ = 17° 39' 39" (RT) |
| D = 52' 05' 13" | D = 63' 39' 43" |
| R = 110.00' | R = 90.00' |
| T = 17.12' | T = 13.98' |
| L = 33.96' | L = 27.74' |
| E = 1.32' | E = 1.08' |
| S.E. RUN = | S.E. RUN = |
| P.C. STA = 31+20.93 | P.C. STA = 31+54.89 |
| P.T. STA = 31+54.89 | P.T. STA = 31+82.64 |



| REVISION | DATE | BY | REMARKS | DRAWN | CHECKED | APPROVED | SECTION | COUNTY | TOTAL SHEETS | SHEET NO. |
|----------|----------|-----|----------------------------------|--------|---------|----------|----------------|-----------|--------------|-----------|
| #1 | 03/22/13 | TJA | IDOT COMMENTS FROM JAN. 28, 2013 | Y.J.A. | C.J.B. | C.W.B. | 01-00302-00-BT | WINNEBAGO | 124 | 24 |

WINNEBAGO COUNTY
VILLAGE OF CHERRY VALLEY
PERRYVILLE PATH SOUTHEAST CONNECTION

WILLET HOFMANN
ASSOCIATES INC.
ENGINEERING ARCHITECTURE LAND SURVEYING
57 AIRPORT DRIVE, ROCKFORD, IL 61109
T. 815.964.2977 FAX 815.964.2978

PERRYVILLE PATH
PLAN & PROFILE
STA. 30+50.00 - STA. 36+00.00

SECTION: 01-00302-00-BT
COUNTY: WINNEBAGO
DATE: 03/01/2013

FILE: S:\PROJECTS\2008\1139001\Phase1\DESIGN\248\BellSchoolEast.spcsheet.dgn