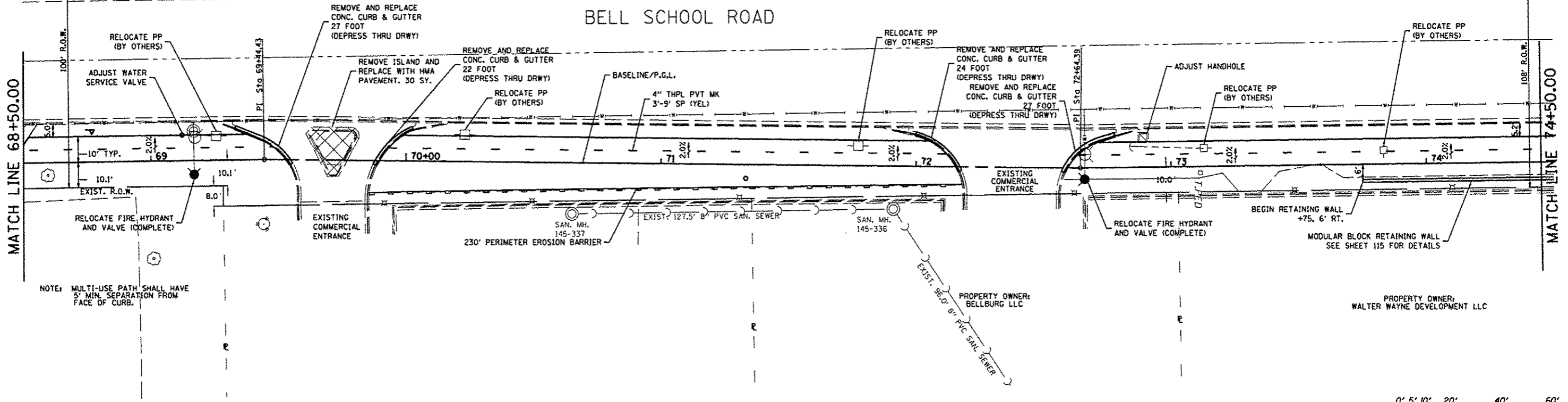
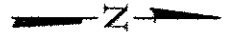
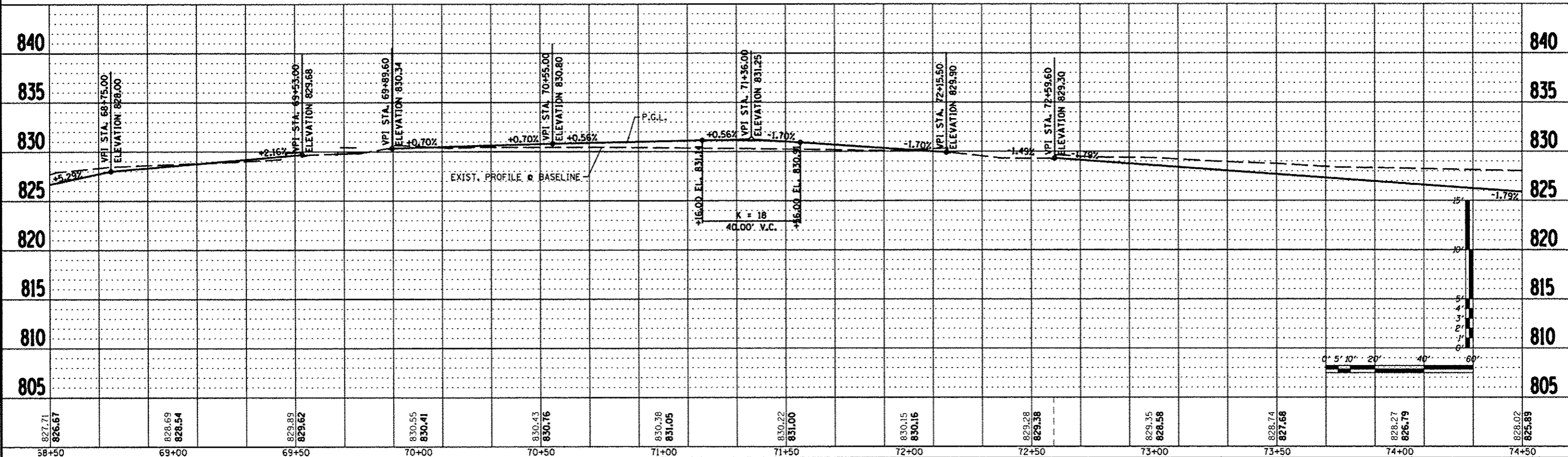


BENCH MARK: *2
DESC. STAINLESS STEEL ROD IN PVC HANDHOLE
LOCATED 28' NORTH OF E NEWBURG ROAD,
200' EAST OF E 190 IN THE MEDIAN OF "TABALA"
DRIVEWAY.
ELEV. 818.20



NOTE: MULTI-USE PATH SHALL HAVE 5' MIN. SEPARATION FROM FACE OF CURB.



REVISION	DATE	BY	REMARKS
*1	03/22/13	YJA	DOOT COMMENTS FROM JAN. 28, 2013

DRAWN: T.J.A.
CHECKED: C.J.B.
APPROVED: C.J.B.

WINNEBAGO COUNTY
VILLAGE OF CHERRY VALLEY
PERRYVILLE PATH SOUTHEAST CONNECTION



PERRYVILLE PATH
PLAN & PROFILE
STA. 68+50.00 - STA. 74+50.00

SECTION	COUNTY	TOTAL SHEETS	SHEET NO.
01-00302-00-BT	WINNEBAGO	124	31
STA. 00+00.00 - STA. 172+20.37			
WHA #: 1139001	DATE: 03/01/2013		

FILE: S:\PROJECTS\2008\1139001_Phase1\DESIGN\310BellSchool\East\sheet.dgn