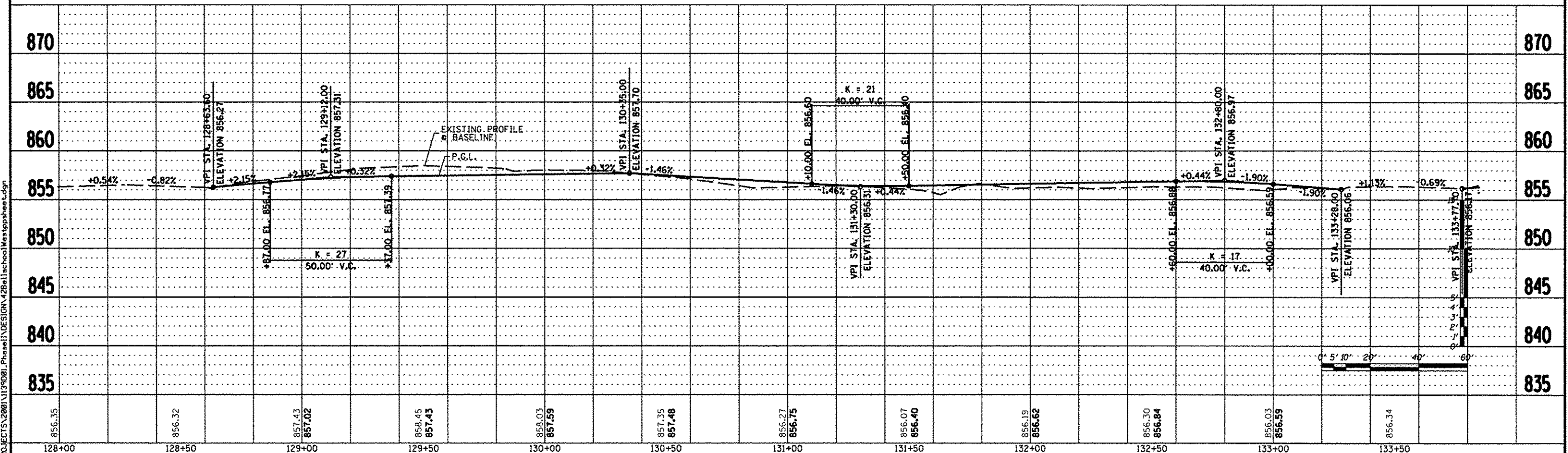


PROP. CURVE C31
 PI STA. = 130+70.82
 $\Delta = 10^{\circ} 02' 23''$ (RT)
 D = 10' 18' 51"
 R = 555.51'
 T = 48.79'
 L = 97.34'
 E = 2.14'
 T.R. =
 S.E. RUN =
 P.C. STA = 130+22.03
 P.T. STA = 131+19.37

PROP. CURVE C32
 PI STA. = 131+62.66
 $\Delta = 9^{\circ} 42' 14''$ (LT)
 D = 11' 14' 04"
 R = 510.00'
 T = 43.29'
 L = 86.38'
 E = 1.83'
 T.R. =
 S.E. RUN =
 P.C. STA = 131+19.37
 P.T. STA = 132+05.74

BENCH MARK #3
 DESC. STAINLESS STEEL ROD IN PVC HANDHOLE
 LOCATED 85' EAST OF EOP TRAINER ROAD,
 46' NORTH OF EOP E. STATE ST.
 SOUTH OF TARGET PARKING LOT.
 ELEV. 872.45



856.35	856.32	857.43	857.02	858.45	857.43	858.03	857.59	857.35	857.48	856.27	856.75	856.07	856.40	856.19	856.62	856.30	856.84	856.03	856.59	856.34
128+00	128+50	129+00	129+50	130+00	130+50	131+00	131+50	132+00	132+50	133+00	133+50									

FILE = S:\PROJECTS\2008\11\95081_Phase1\1\DESIGN\128BellSchoolWest.spcsheet.dgn

REVISION	DATE	BY	REMARKS
1	03/22/13	TJA	ADD COMMENTS FROM JAN. 28, 2013

WINNEBAGO COUNTY
VILLAGE OF CHERRY VALLEY
PERRYVILLE PATH SOUTHEAST CONNECTION

PERRYVILLE PATH
PLAN & PROFILE
 STA. 128+35.00 - STA. 133+50.00

SECTION	COUNTY	TOTAL SHEETS	SHEET NO.
01-00302-00-BT	WINNEBAGO		
STA. 00+00.00 - STA. 172+20.37			
WHA #: 1139001	DATE: 03/01/2013	124	42