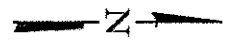


PROPERTY OWNER:
SAC PROPERTIES LLC

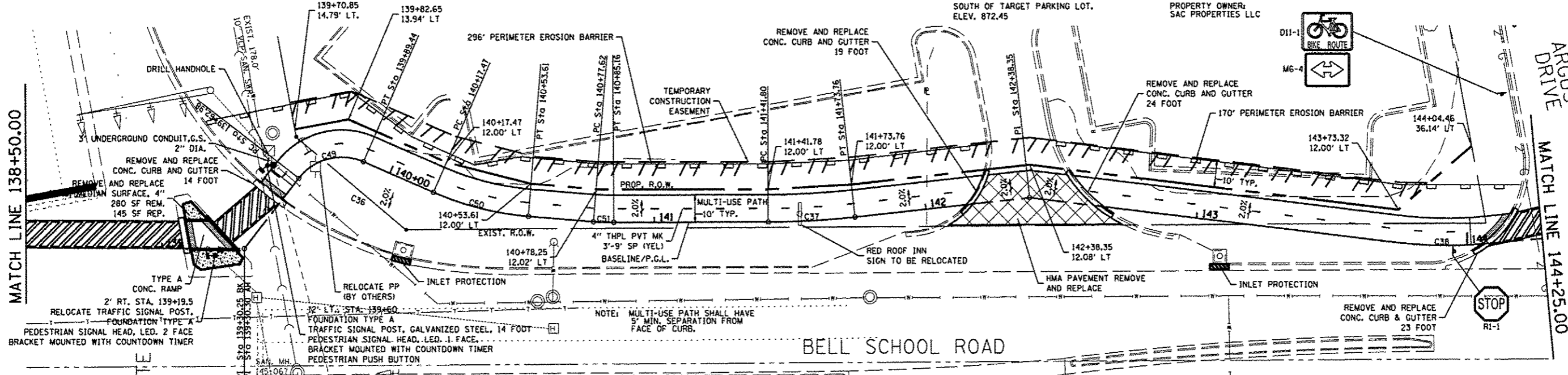
BENCH MARK: #3
DESC. STAINLESS STEEL ROD IN PVC HANDHOLE
LOCATED 85' EAST OF EOP TRAINER ROAD,
46' NORTH OF EOP E. STATE ST.
SOUTH OF TARGET PARKING LOT.
ELEV. 872.45

PROPERTY OWNER:
SAC PROPERTIES LLC



MATCH LINE 138+50.00

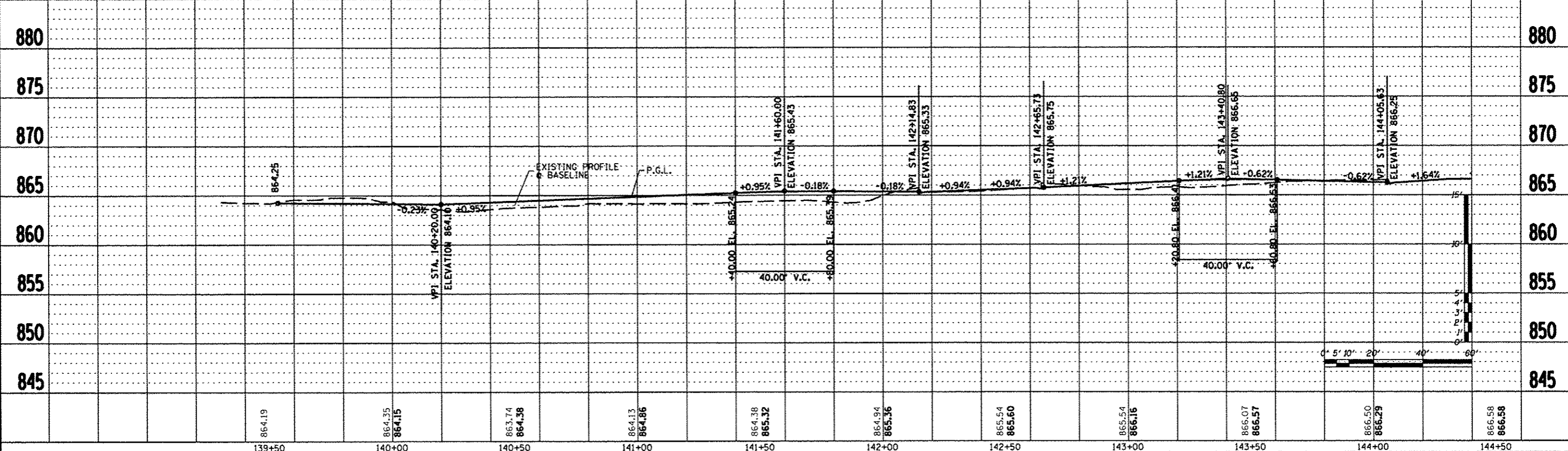
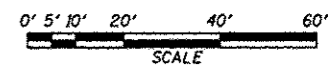
MATCH LINE 144+25.00



SEE SHEET 64 FOR INTERSECTION DETAIL

SEE SHEET 65 FOR INTERSECTION DETAIL

PROP. CURVE C49	PROP. CURVE C50	PROP. CURVE C51	PROP. CURVE C37	PROP. CURVE C38
PI STA. = 139+78.55	PI STA. = 140+35.70	PI STA. = 140+81.39	PI STA. = 141+57.79	PI STA. = 143+90.31
$\Delta = 75^\circ 48' 39''$ (RT)	$\Delta = 18^\circ 49' 31''$ (LT)	$\Delta = 3^\circ 55' 29''$ (LT)	$\Delta = 6^\circ 06' 12''$ (LT)	$\Delta = 12^\circ 07' 22''$ (LT)
D = 286' 28" 44"	D = 52' 05" 13"	D = 52' 05" 13"	D = 19' 05" 55"	D = 35' 48" 36"
R = 20.00'	R = 110.00'	R = 110.00'	R = 300.00'	R = 160.00'
T = 15.57'	T = 18.24'	T = 3.77'	T = 15.99'	T = 16.99'
L = 26.46'	L = 36.14'	L = 7.53'	L = 31.96'	L = 33.85'
E = 5.35'	E = 1.50'	E = 0.06'	E = 0.43'	E = 0.90'
$\theta =$ -----	$\theta =$ -----	$\theta =$ -----	$\theta =$ -----	$\theta =$ -----
T.R. = -----	T.R. = -----	T.R. = -----	T.R. = -----	T.R. = -----
S.E. RUN = -----	S.E. RUN = -----	S.E. RUN = -----	S.E. RUN = -----	S.E. RUN = -----
P.C. STA = 139+62.98	P.C. STA = 140+17.47	P.C. STA = 140+77.62	P.C. STA = 141+41.80	P.C. STA = 143+73.32
P.T. STA = 139+89.44	P.T. STA = 140+53.61	P.T. STA = 140+85.16	P.T. STA = 141+73.76	P.T. STA = 144+07.18



REVISION	DATE	BY	REMARKS
#1	03/22/13	TJA	DOT COMMENTS FROM JAN. 28, 2013

DRAWN: T.J.A.
CHECKED: C.J.B.
APPROVED: C.J.B.

WINNEBAGO COUNTY
VILLAGE OF CHERRY VALLEY
PERRYVILLE PATH SOUTHEAST CONNECTION

WILLETT HOFMANN
ASSOCIATES INC.
ENGINEERING ARCHITECTURE LAND SURVEYING
57 AIRPORT DRIVE, ROCKFORD, IL 61109
T: 815.964.2897 FAX: 815.964.2898

PERRYVILLE PATH
PLAN & PROFILE
STA. 138+50.00 - STA. 144+25.00

SECTION	COUNTY	TOTAL SHEETS	SHEET NO.
01-00302-00-BT	WINNEBAGO	124	44
STA. 00+00.00 - STA. 172+20.37			
WHA #: 1139001	DATE: 03/01/2013		

FILE = S:\PROJECTS\2008\1139001\Phase1\DESIGN\448a\Tech\WHP\Sheet.dgn