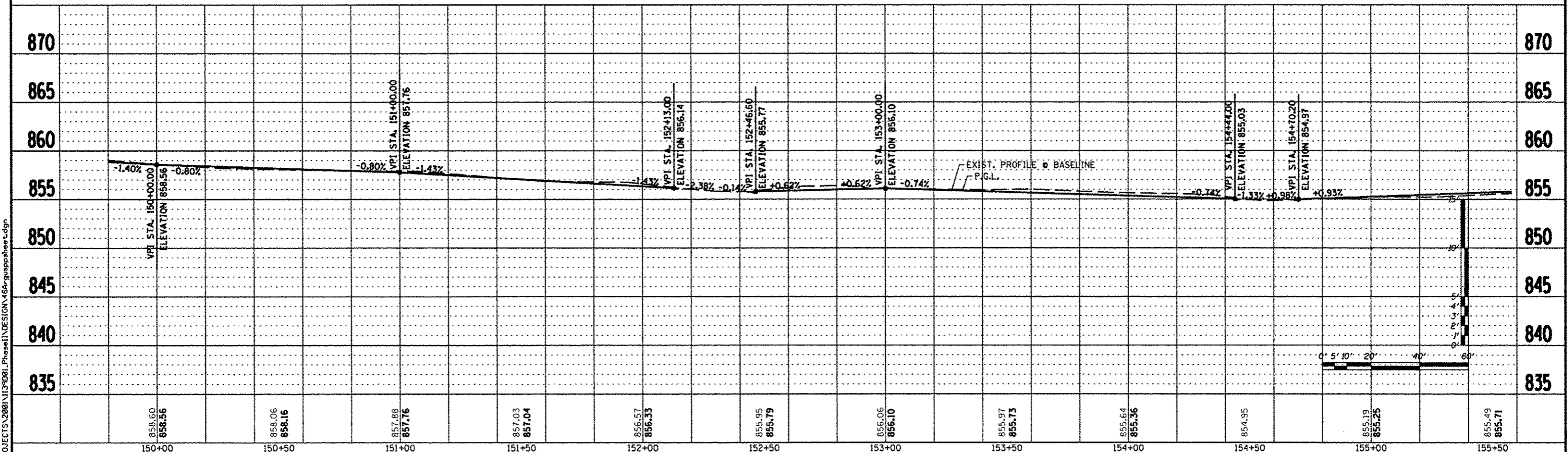


NOTE: MULTI-USE PATH SHALL HAVE 5' MIN. SEPARATION FROM FACE OF CURB.

BENCH MARK: #3
DESC. STAINLESS STEEL ROD IN PVC HANDHOLE
LOCATED 85' EAST OF EOP TRAINER ROAD,
46' NORTH OF EOP E. STATE ST.
SOUTH OF TARGET PARKING LOT.
ELEV. 872.45



REVISION	DATE	BY	REMARKS
*1	03/22/13	TJA	100% COMMENTS FROM JAN. 28, 2013

DRAWN: T.J.A.
CHECKED: C.J.B.
APPROVED: C.J.B.

WINNEBAGO COUNTY
VILLAGE OF CHERRY VALLEY
PERRYVILLE PATH SOUTHEAST CONNECTION

WILLET HOFMANN
ASSOCIATES INC.
ENGINEERING ARCHITECTURAL LAND SURVEYING
57 AIRPORT DRIVE, ROCKFORD, IL 61109
T: 815-964-2897 DESIGN PERM: #184-000718

PERRYVILLE PATH
PLAN & PROFILE
STA. 150+00.00 - STA. 155+50.00

SECTION	COUNTY	TOTAL SHEETS	SHEET NO.
01-00302-00-BT	WINNEBAGO	124	46

WHA #: 1139D01 DATE: 03/01/2013

FILE: S:\PROJECTS\2008\1139D01\Phase1\DESIGN\46-gunnsabee.dgn